



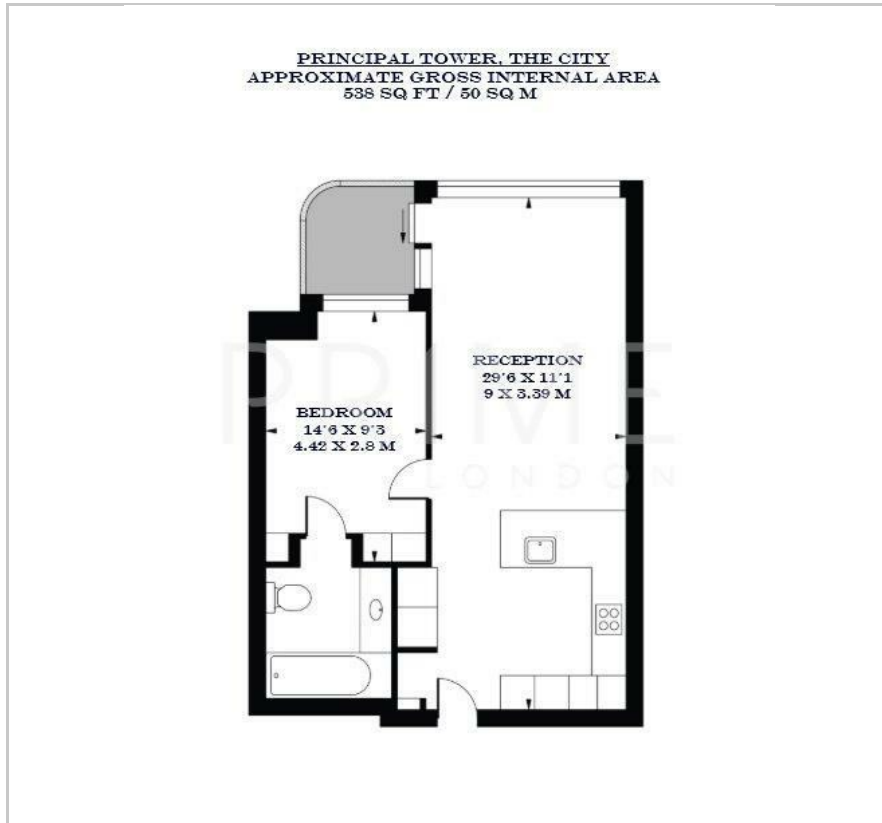
Principal Tower

2 Principal Place, Worship Street, EC2A 2FE

Asking Price £725,000



Floor Plan



Area Map



Energy Efficiency Graph



Viewing

By appointment. Contact us on 0207 052 1075 if you wish to arrange a viewing appointment for this property, or require further information.

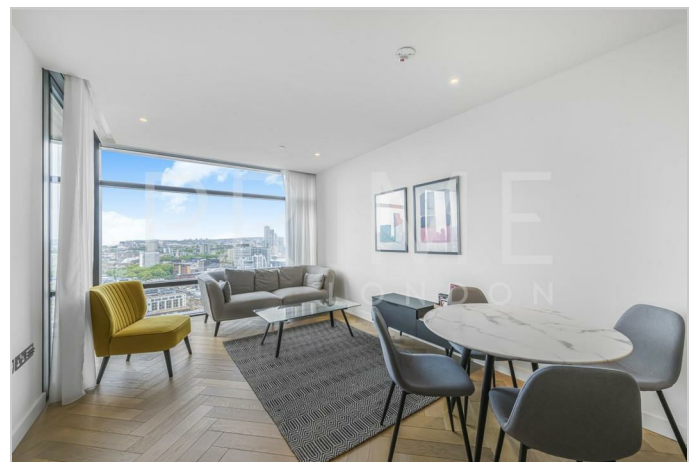
- One bedroom apartment
- 538 sq ft (50 sqm)
- Sweeping views of London's skyline
- Sleek wooden flooring and floor-to-ceiling windows
- Residents' gym, pool, spa and cinema
- 24 hour concierge

This exceptional one bedroom apartment, ideally situated within the luxurious Principal Tower, is offered for sale through Prime London.

Spanning 538 sq ft (50 sqm) and presented in excellent condition, the property comprises a spacious double bedroom with en-suite, a stylish open-plan living area, and a sizeable private balcony with sweeping views across the City skyline and Canary Wharf. Additional features include sleek wooden flooring and floor-to-ceiling windows, creating a bright and airy feel throughout.

Residents of Principal Tower enjoy access to an impressive array of amenities, including a state-of-the-art gym and spa, a private screening room, a lap pool, and a vibrant new selection of on-site shops, restaurants, and bars. A 24-hour concierge service provides added convenience and security.

Perfectly positioned at the crossroads of the City of London and fashionable Shoreditch, Principal Tower offers a rare opportunity to live in one of London's most dynamic locations. The London Stock Exchange and designer boutiques of the Royal Exchange are both within easy walking distance.



These particulars, whilst believed to be accurate are set out as a general outline only for guidance and do not constitute any part of an offer or contract. Intending purchasers should not rely on them as statements of representation of fact, but must satisfy themselves by inspection or otherwise as to their accuracy. No person in this firm's employment has the authority to make or give any representation or warranty in respect of the property.