

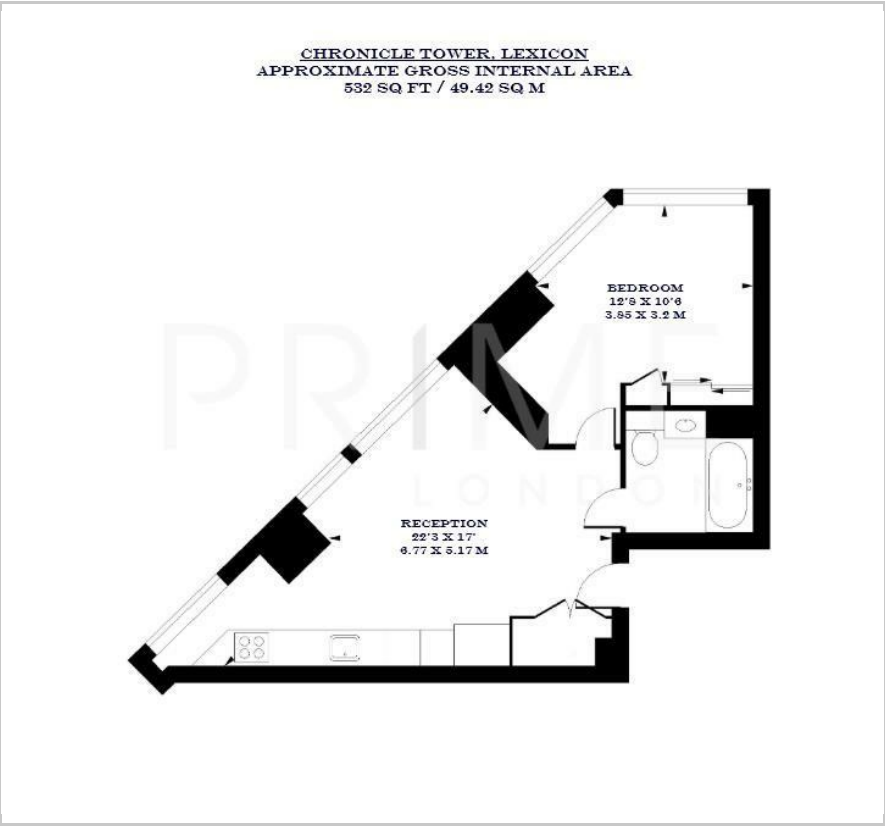
Chronicle Tower

Lexicon, 261B City Road, EC1V 1AJ

£646 Per Week



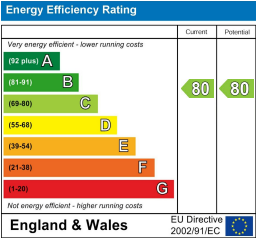
Floor Plan



Area Map



Energy Efficiency Graph



Viewing

By appointment. Contact us on 0207 052 1075 if you wish to arrange a viewing appointment for this property, or require further information.

- One bedroom apartment
- Views of the canal
- Positioned between Angel, Old Street and Shoreditch
- 532 sq ft (49.42 sqm)
- Residents' pool, gym, spa, and business lounge
- 24 hour concierge



This exquisite one bedroom apartment in the prestigious Chronicle Tower, nestled in the vibrant heart of City Road Basin, is available for lease through Prime London.

Boasting 532 sq ft (49.42 sqm) of meticulously designed space, this property offers a bespoke kitchen, featuring ceramic tile floors and oak doors, and seamlessly integrating with the living area. The floor to ceiling windows offer captivating views of the canal and basin, and invite natural light into the living space. The apartment offers one generously sized bedroom featuring ample storage, as well as one bathroom

Residents of Chronicle Tower enjoy exclusive access to a suite of premium amenities, including a spa, swimming pool, fully equipped gym, steam room, and sauna. There is also a 24 hour concierge for added convenience.

Located a short distance from Angel and Old Street stations, the property offers excellent transport links. Enjoy the vibrant lifestyle of nearby Shoreditch and Upper Street, with their array of shopping, dining, and entertainment options.

For transportation, Angel underground station is located 0.4 miles away.



These particulars, whilst believed to be accurate are set out as a general outline only for guidance and do not constitute any part of an offer or contract. Intending purchasers should not rely on them as statements of representation of fact, but must satisfy themselves by inspection or otherwise as to their accuracy. No person in this firms employment has the authority to make or give any representation or warranty in respect of the property.