



Principal Tower

2 Principal Place, Worship Street, EC2A 2BA

£698,000



1



1

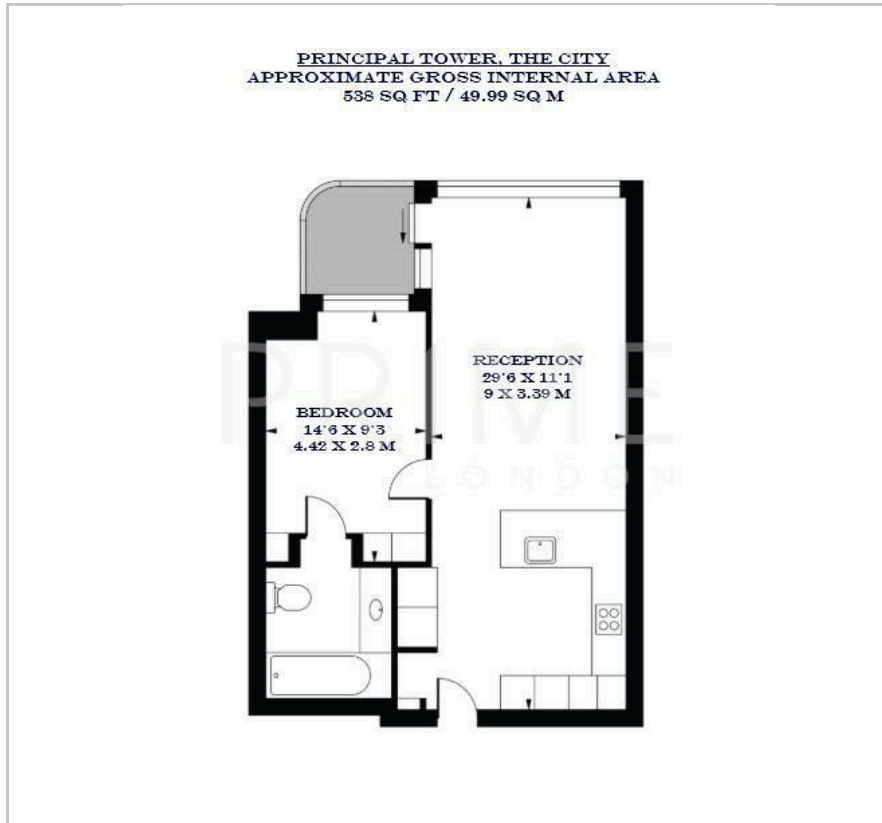


1



B

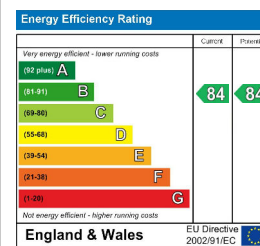
Floor Plan



Area Map



Energy Efficiency Graph



Viewing

By appointment. Contact us on 0207 052 1075 if you wish to arrange a viewing appointment for this property, or require further information.

- One bedroom apartment
- 538 sq ft (50 sqm)
- Private balcony with east facing views
- Residents' spa, pool, gym and cinema room
- Prime location between the City and Shoreditch
- 24 hour concierge



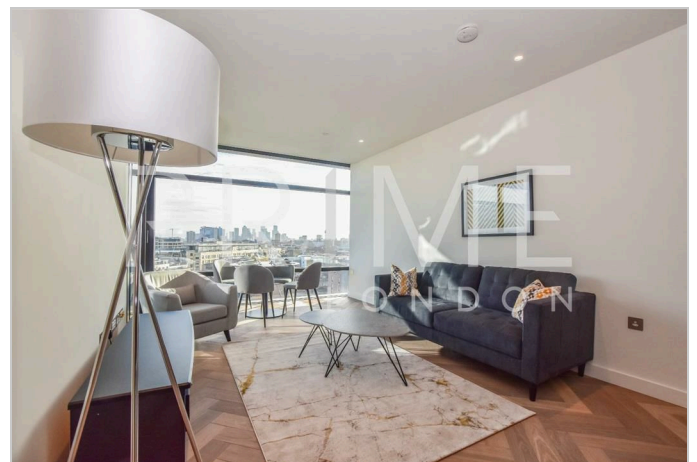
This extremely well-positioned luxury one bedroom apartment, located in the iconic Principal Tower, is available for sale through Prime London.

Boasting bright, expansive east-facing views, the property features a spacious double bedroom with ample built-in storage, a beautifully finished modern bathroom, and a generous open-plan living area that seamlessly integrates with a sleek kitchen. A private balcony offers an ideal setting for relaxation.

Residents of Principal Tower benefit from a 24 hour concierge, gym, pool, and cinema room.

Principal Tower enjoys a prestigious location overlooking the heart of the City of London, one of the world's leading financial districts, while also sitting on the edge of vibrant, creative Shoreditch. This property places you within walking distance of the London Stock Exchange, the Royal Exchange, and an array of high-fashion boutiques and fine dining establishments.

Residents also benefit from immediate access to five major transport hubs, ensuring seamless connections to all parts of the capital.



These particulars, whilst believed to be accurate are set out as a general outline only for guidance and do not constitute any part of an offer or contract. Intending purchasers should not rely on them as statements of representation of fact, but must satisfy themselves by inspection or otherwise as to their accuracy. No person in this firm's employment has the authority to make or give any representation or warranty in respect of the property.