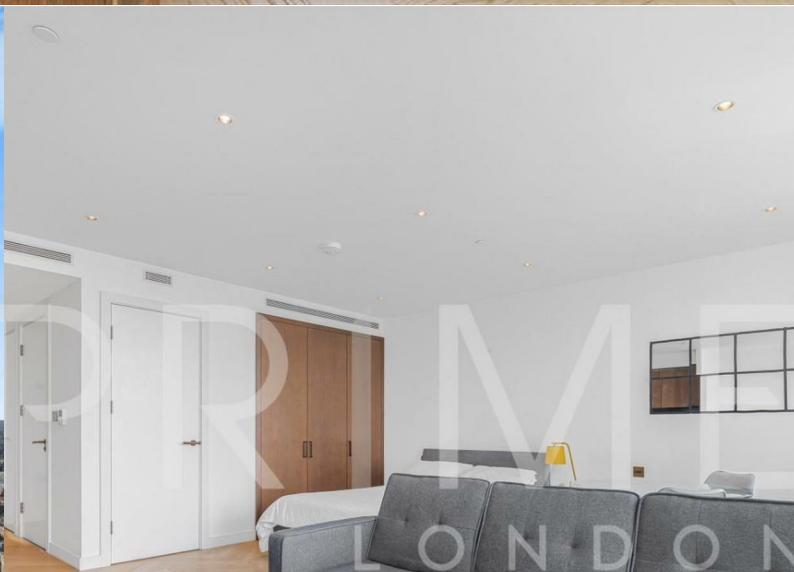


## Landmark Pinnacle

10 Marsh Wall, Canary Wharf, E14 9PR

Asking Price £575,000



1



1



1



B

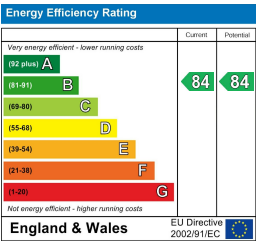
Floor Plan



Area Map



Energy Efficiency Graph



Viewing

By appointment. Contact us on 0207 928 6663 if you wish to arrange a viewing appointment for this property, or require further information.

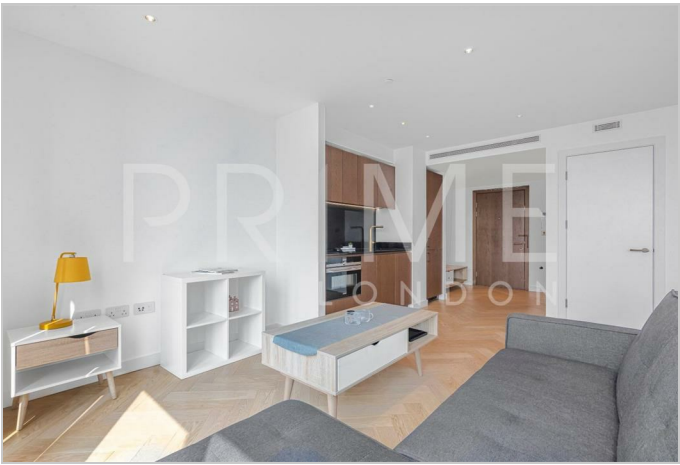
- Studio Apartment
- 448 sq ft (41.6 sqm)
- Chain free sale
- 56th floor gym and Pilates area
- Residents' cinema, media room
- Lounge, library
- Golf simulator, games room
- 24 hour concierge

Set on the sixty-third floor, this bright and cosy studio apartment situated within the Landmark Pinnacle development is available for chain-free sale with Prime London.

This stunning apartment has 448 sq ft (41.6 sqm) of space and features an open-plan kitchen seamlessly integrated with a living area, forming a welcoming dining and social space. The development itself showcases a blend of modern architecture and innovative landscaping, offering residents access to a classic gymnasium, bike storage facilities, and communal grounds for various activities. This sets a new standard for high-rise living in the heart of London's bustling new financial centre.

Residents at Landmark Pinnacle enjoy additional amenities such as a private cinema hall, sky gardens, and green open spaces with health-friendly facilities. The entire development boasts centralized security with a dedicated 24 hour concierge, CCTV security, and a video entry panel.

This development is close to reliable and frequent transport links across London and quick flights to continental Europe, complemented by a premium selection of retail and restaurant options.



These particulars, whilst believed to be accurate are set out as a general outline only for guidance and do not constitute any part of an offer or contract. Intending purchasers should not rely on them as statements of representation of fact, but must satisfy themselves by inspection or otherwise as to their accuracy. No person in this firm's employment has the authority to make or give any representation or warranty in respect of the property.