

## Keybridge House

2 Exchange Gardens, Vauxhall, SW8 1DF

Offers Over £900,000



2



2

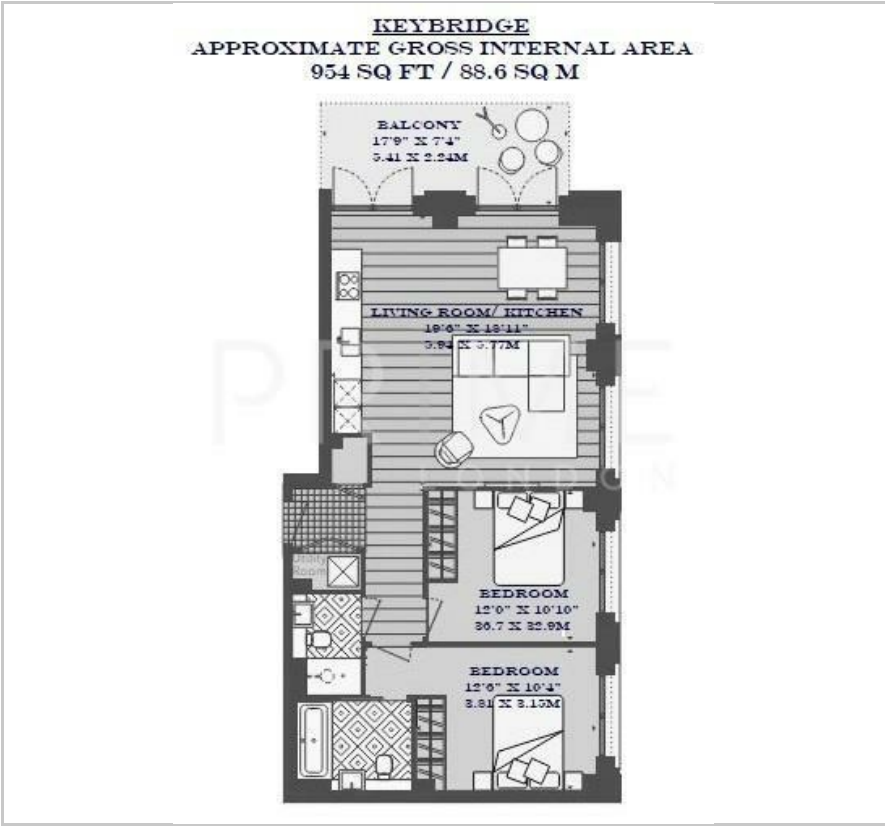


1

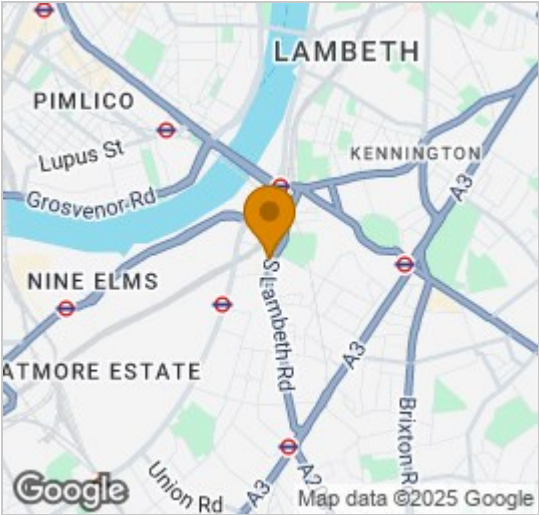


B

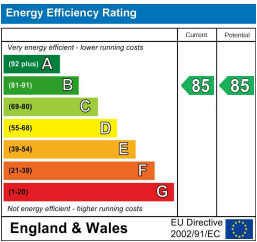
Floor Plan



Area Map



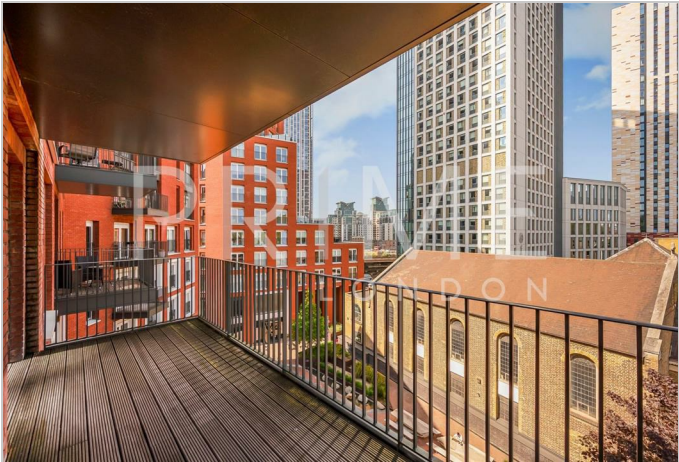
Energy Efficiency Graph



Viewing

By appointment. Contact us on 0207 928 6663 if you wish to arrange a viewing appointment for this property, or require further information.

- Two bedroom apartment
- 846 sq ft (78.6 sqm)
- Parking space
- 24 hour concierge
- Residents' pool and gym
- Residents' club lounge



This high specification two bedroom two bathroom apartment, with secure parking, is set within the highly desirable Keybridge development, and available for chain free sale through Prime London.

This 954 sq ft (88.6 sqm) apartment offers an open plan living room and kitchen, smart integrated kitchen, a master bedroom with an ensuite, a spacious double bedroom, with a luxury family bathroom. The apartment is well designed to be lived in and enjoyed. The property also benefits from having comfort cooling and underfloor heating.

Residents benefit from a 24 hour concierge service, 15 metre swimming pool, a club lounge and communal gardens, all within walking distance of Zone 1 transport links.



These particulars, whilst believed to be accurate are set out as a general outline only for guidance and do not constitute any part of an offer or contract. Intending purchasers should not rely on them as statements of representation of fact, but must satisfy themselves by inspection or otherwise as to their accuracy. No person in this firm's employment has the authority to make or give any representation or warranty in respect of the property.