



Artillery Mansions

75 Victoria Street, SW1H 0HX

£692 Per Week



1



1

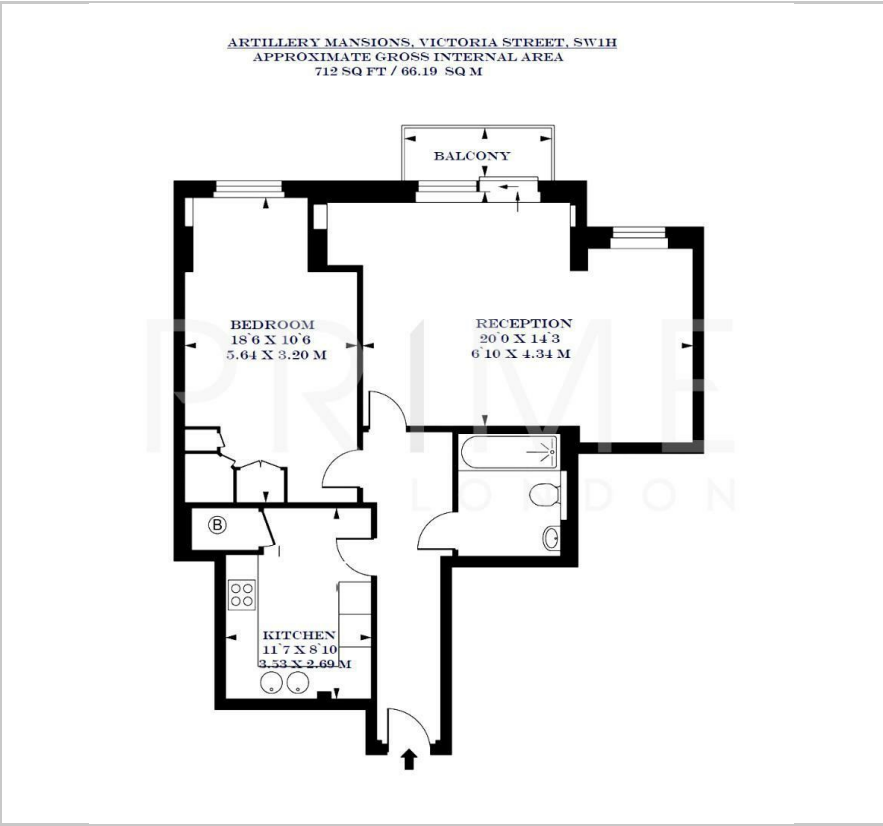


1



B

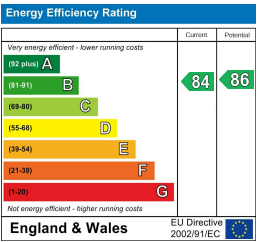
Floor Plan



Area Map



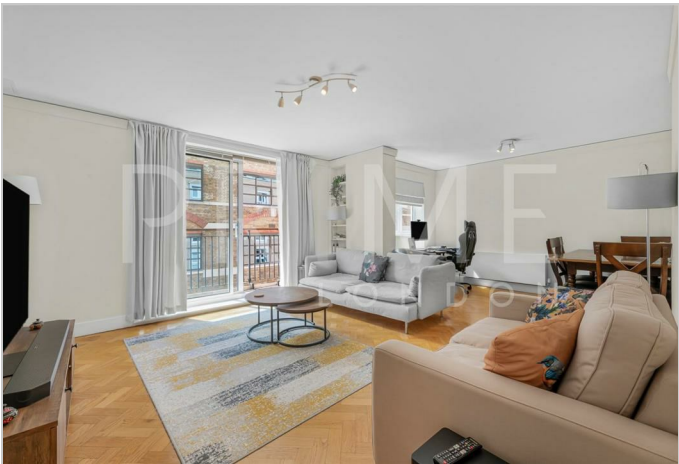
Energy Efficiency Graph



Viewing

By appointment. Contact us on 0207 052 1075 if you wish to arrange a viewing appointment for this property, or require further information.

- Spacious apartment
- 734 sq ft (68.2 sqm)
- Fully furnished
- Substantial private balcony
- Pet friendly
- 24 hour concierge



This beautiful and larger than average one bedroom apartment, of 734 sq ft (68.2 sqm) located in the prestigious Artillery Mansions development, is available for lease through Prime London.

The property comes fully furnished and comprises a master bedroom, bathroom, open plan reception/dining room, kitchen and balcony. The apartment benefits from 24 hour concierge, a lift which serves all floors, and a beautiful gated courtyard on the ground floor.

Artillery Mansions is a famed and well maintained development in central Westminster. It is located to the south of Buckingham Palace, St James's and Green Park, to the east of Victoria and to the north of Vincent Square. The property is within reach of the many amenities, restaurants, cafes and shops of Victoria, Westminster, St James's and Mayfair.

This is an location which is highly regarded as giving excellent access to areas across central London.

Transport Links include: Circle & District Lines (St James's Park): approx. 0.1 miles, Victoria and mainline rail services (Victoria): approx. 0.4 miles, Jubilee Line (Westminster): approx. 0.5 miles.

These particulars, whilst believed to be accurate are set out as a general outline only for guidance and do not constitute any part of an offer or contract. Intending purchasers should not rely on them as statements of representation of fact, but must satisfy themselves by inspection or otherwise as to their accuracy. No person in this firms employment has the authority to make or give any representation or warranty in respect of the property.