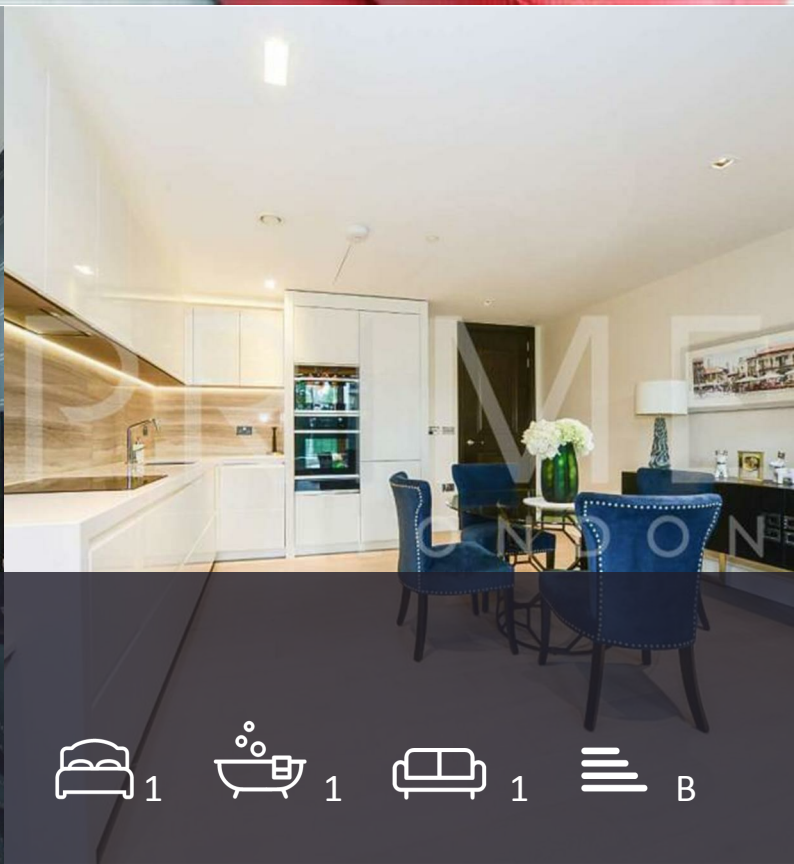




Thomas Earle House

1 Warwick Lane, Kensington, W14 8FN

£900 Per Week



1



1



1



B

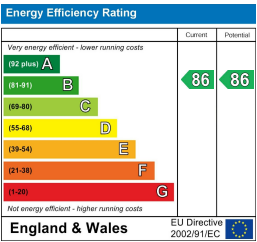
Floor Plan



Area Map



Energy Efficiency Graph



Viewing

By appointment. Contact us on 0207 052 1075 if you wish to arrange a viewing appointment for this property, or require further information.

- One bedroom duplex ■ 1,120 sq ft (104.2 sqm) apartment
- Generous private patio ■ Just 0.3 miles to West Kensington station
- Residents' gym, pool, spa, ■ 24 hour concierge cinema room and business suite

This beautifully designed one bedroom duplex apartment, located in the prestigious Kensington Row, is available for lease through Prime London.

Thoughtfully arranged over two levels, the apartment is bathed in natural light and finished to a high standard throughout. Totalling 1,120 sq ft (104.2 sqm), the upper floor hosts a generously proportioned open-plan kitchen and reception area. The lower level features a luxurious principal bedroom suite with extensive fitted wardrobes, alongside a sleek bathroom featuring both a separate bathtub and walk-in shower. A dedicated utility room is also located on this floor, providing added convenience.

The apartment opens out onto a private courtyard, which enjoys sun throughout the afternoon and into the evening.

Situated within the award-winning Kensington Row development by Berkeley Homes, residents enjoy access to a host of five-star amenities, including a 24 hour concierge, gym, swimming pool, spa, private cinema and a fully equipped business suite.



These particulars, whilst believed to be accurate are set out as a general outline only for guidance and do not constitute any part of an offer or contract. Intending purchasers should not rely on them as statements of representation of fact, but must satisfy themselves by inspection or otherwise as to their accuracy. No person in this firm's employment has the authority to make or give any representation or warranty in respect of the property.