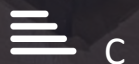


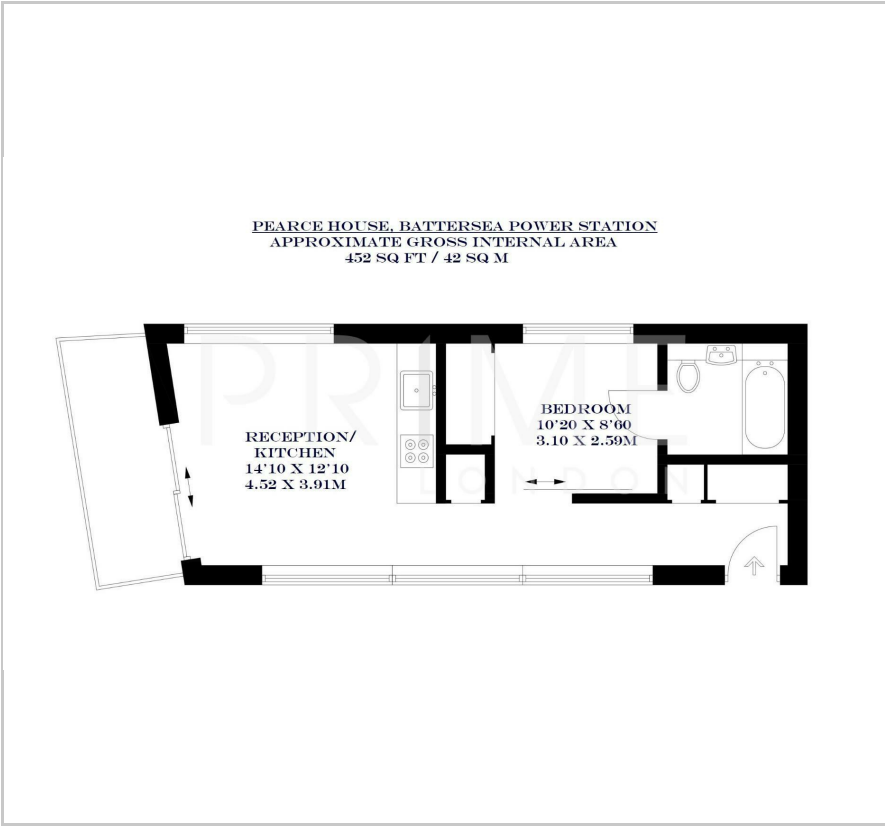
Pearce House

Battersea Power Station, SW11 8EZ

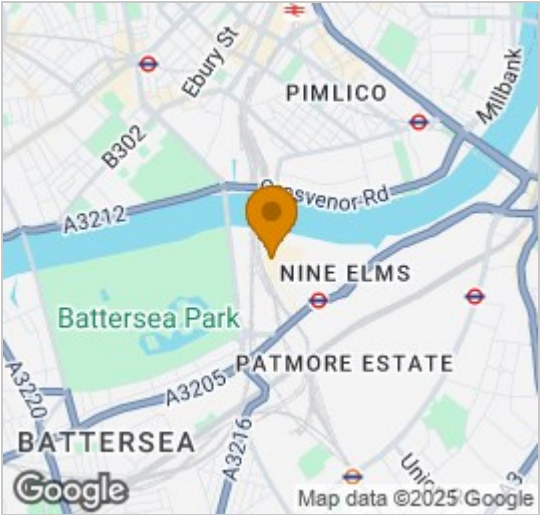
£692 Per Week



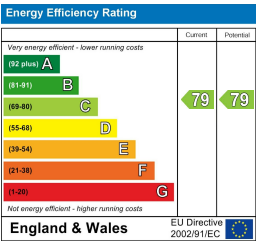
Floor Plan



Area Map



Energy Efficiency Graph



Viewing

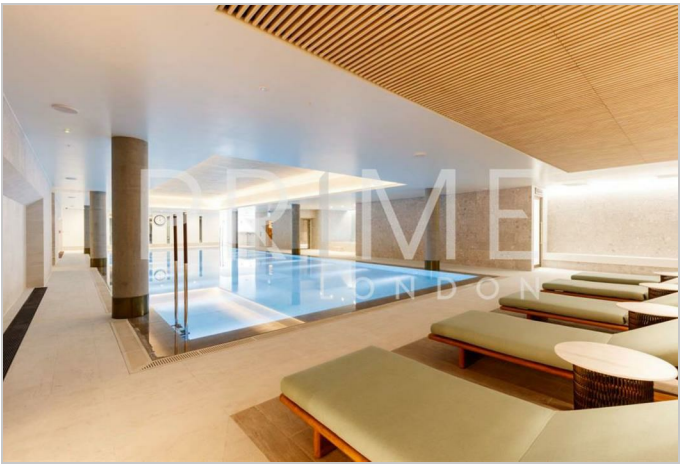
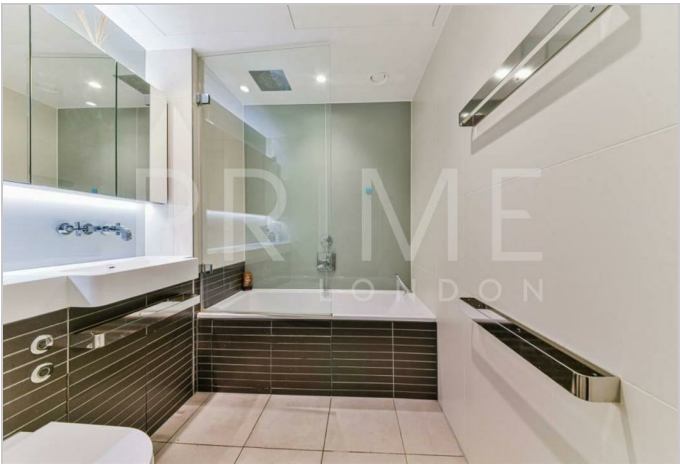
By appointment. Contact us on 0207 928 6663 if you wish to arrange a viewing appointment for this property, or require further information.

- Well kept modern apartment
- 452 sq ft (42 sqm)
- Fully furnished
- Residents' cinema, games room, meeting room
- Residents' gym, swimming pool and spa
- 24 hour concierge

This well-presented and modern Manhattan apartment within the stunning Battersea Power Station development (next to the River Thames, Battersea Park and the new Battersea Power Station Northern Line station) comes fully furnished and is available to rent through Prime London.

Finished to a very high standard throughout and extremely well kept this 452 sq ft (42 sqm) apartment comprises of open plan fully equipped and integrated kitchen and reception room leading to a full length private winter garden with views over the internal landscaped gardens. The property further comprises a well-proportioned double bedroom area with fitted wardrobes and a separate family bathroom.

Resident facilities include a first class 24 hour concierge, on-site gym, swimming pool and spa, cinema, games room, meeting room and all day restaurant. Located next to the River Thames, this luxury apartment is ideally located for Chelsea, Battersea Park and the tube and rail stations nearby.



These particulars, whilst believed to be accurate are set out as a general outline only for guidance and do not constitute any part of an offer or contract. Intending purchasers should not rely on them as statements of representation of fact, but must satisfy themselves by inspection or otherwise as to their accuracy. No person in this firm's employment has the authority to make or give any representation or warranty in respect of the property.