

## Cubitt Building

10 Gatliff Road, Grosvenor Waterside, SW1W 8QL

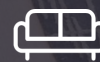
Asking Price £699,999



1



1



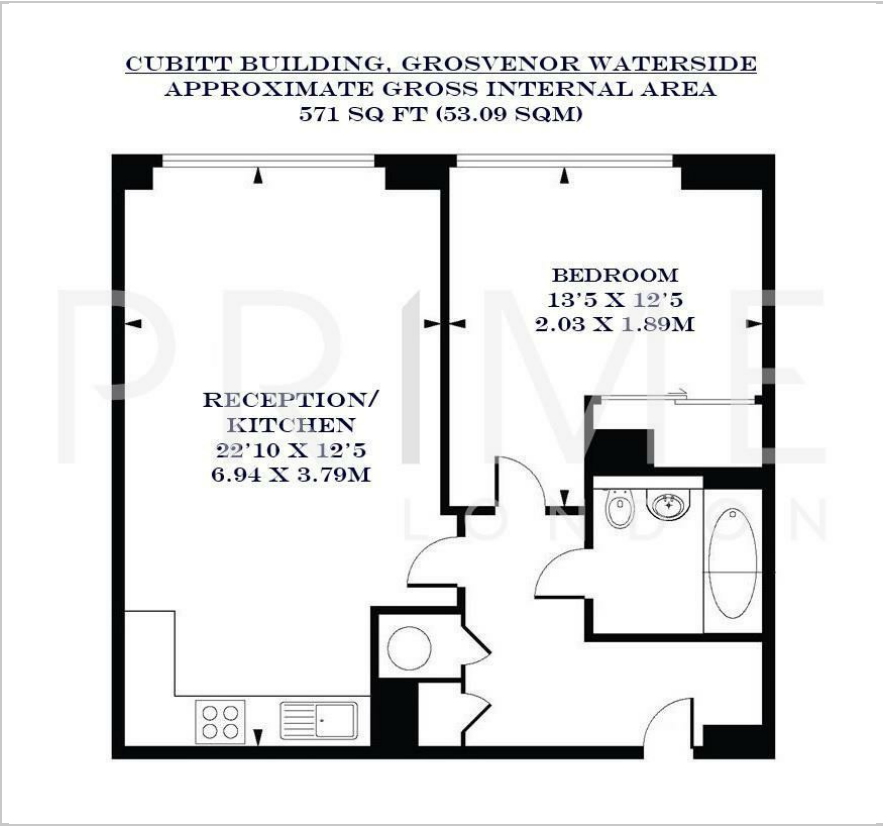
1



C



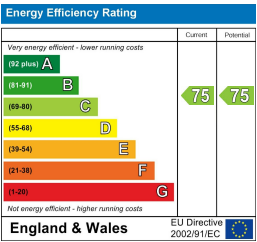
Floor Plan



Area Map



Energy Efficiency Graph



Viewing

By appointment. Contact us on 0207 052 1075 if you wish to arrange a viewing appointment for this property, or require further information.

- Modern apartment
- 571 sq ft (53.09 sqm)
- Sought after development
- Close to Sloane Square
- Residents leisure suite
- 24 hour concierge



A beautifully presented one bedroom apartment, spanning approximately 571 sq ft (53.09 sq m), within the sought-after Grosvenor Waterside development, available for sale through Prime London.

The apartment features an inviting open-plan reception area seamlessly connected to an integrated kitchen, complemented by elegant wood flooring throughout.

Residents benefit from the convenience of a 24 hour concierge service and exclusive access to a superb leisure suite, complete with gym and spa facilities.

Conveniently located within walking distance to Sloane Square and Victoria rail links, residents enjoy swift connections to both the City and Gatwick Airport.



These particulars, whilst believed to be accurate are set out as a general outline only for guidance and do not constitute any part of an offer or contract. Intending purchasers should not rely on them as statements of representation of fact, but must satisfy themselves by inspection or otherwise as to their accuracy. No person in this firms employment has the authority to make or give any representation or warranty in respect of the property.