



Parliament View Apartments

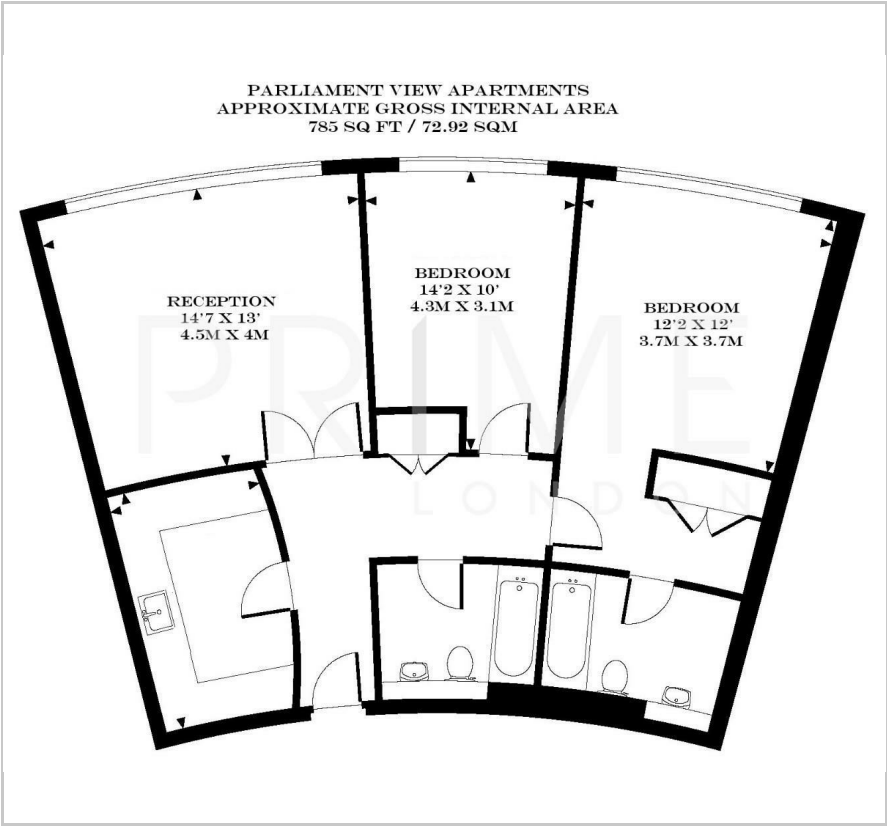
1 Albert Embankment, SE1 7XQ

£800 Per Week



B

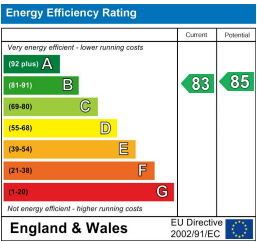
Floor Plan



Area Map



Energy Efficiency Graph



Viewing

By appointment. Contact us on 0207 928 6663 if you wish to arrange a viewing appointment for this property, or require further information.

- Two bedroom apartment
- Secure parking space
- 807 sq ft (75 sqm)
- Residents' gymnasium
- Iconic views of the River Thames and Big Ben
- 24 hour concierge



This bright two bedroom apartment, located in the popular Parliament View Apartments, is available for lease through Prime London.

The apartment offers some of the most iconic views in London, including the River Thames, Houses of Parliament, and Big Ben.

Totalling 807 sq ft (75 sqm), the apartment features a bright reception room, a separate kitchen, and a master bedroom with a dedicated dressing area and en suite bathroom. There is also a second double bedroom, a separate family bathroom, wooden flooring throughout, and an integrated air cooling system.

Parliament View itself provides residents with a 24 hour concierge service, access to a private gym, and an unbeatable riverside location between Lambeth and Vauxhall Bridge.

This central position places the West End, Westminster, the City, and the South Bank all within easy reach, along with excellent transport links via nearby Vauxhall rail and underground stations.



These particulars, whilst believed to be accurate are set out as a general outline only for guidance and do not constitute any part of an offer or contract. Intending purchasers should not rely on them as statements of representation of fact, but must satisfy themselves by inspection or otherwise as to their accuracy. No person in this firm's employment has the authority to make or give any representation or warranty in respect of the property.