

Wiltshire House

2 Maidstone Buildings Mews, London Bridge, SE1 1GH

Asking Price £750,000



1



1



1



E

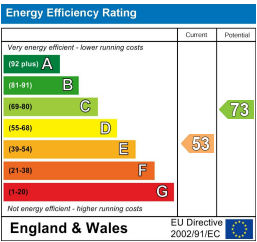
Floor Plan



Area Map



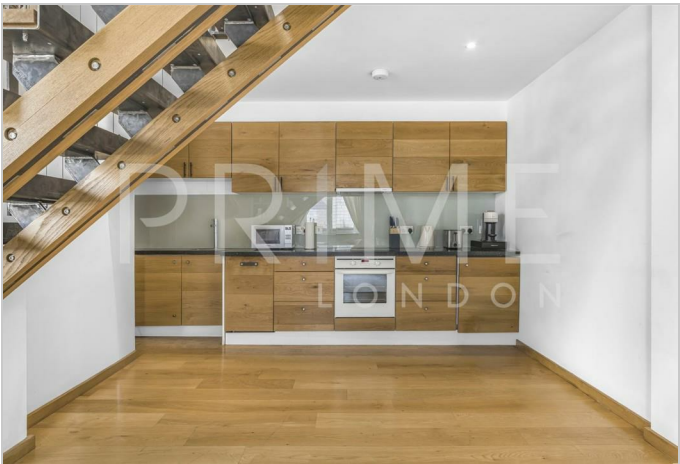
Energy Efficiency Graph



Viewing

By appointment. Contact us on 0207 928 6663 if you wish to arrange a viewing appointment for this property, or require further information.

- Warehouse conversion
- 883.17 sq ft (82.05 sqm)
- Double-height reception
- Substantial mezzanine
- Exposed brickwork and original beams
- On site porter



This exceptional warehouse conversion apartment spans 883.17 sq ft (82.05 sqm) and is situated within the historic Maidstone Buildings Mews in the heart of London Bridge, and available for sale through Prime London.

This unique residence blends authentic character with modern comforts and boasts a double-height, dual-aspect reception room with expansive windows that flood the space with natural light. Original beams and exposed brickwork pay homage to the building's industrial heritage, while the open-plan kitchen is seamlessly integrated, perfect for both entertaining and everyday living. A generously sized mezzanine level houses the principal bedroom, offering a sense of openness while maintaining privacy. Adjoining the mezzanine is a separate study or dressing area, ideal for working from home or additional storage. The family-sized bathroom is well-appointed and conveniently located on the upper level.

Tucked away in a quiet, secure gated mews, the development provides a peaceful retreat within one of London's most vibrant neighbourhoods. Borough Market, The Shard, London Bridge station, and Hays Galleria are all within a two-minute walk, making this location unbeatable for access to dining, transport, and cultural landmarks. The building also benefits from on-site security for added peace of mind.

This is a rare opportunity to acquire a distinctive home in an iconic part of London, combining spacious interiors, historical charm, and unparalleled convenience.



These particulars, whilst believed to be accurate are set out as a general outline only for guidance and do not constitute any part of an offer or contract. Intending purchasers should not rely on them as statements of representation of fact, but must satisfy themselves by inspection or otherwise as to their accuracy. No person in this firm's employment has the authority to make or give any representation or warranty in respect of the property.