



Parliament View Apartments, 1 Albert Embankment, SE1 7XN

£1,400,000





£1,400,000

Parliament View Apartments

1 Albert Embankment, SE1 7XN

- Redesigned and tastefully refurbished
- 1,130 sq ft (104.95 sqm)
- Secure parking space.
- Iconic views
- Air-conditioned
- 24 hour concierge service

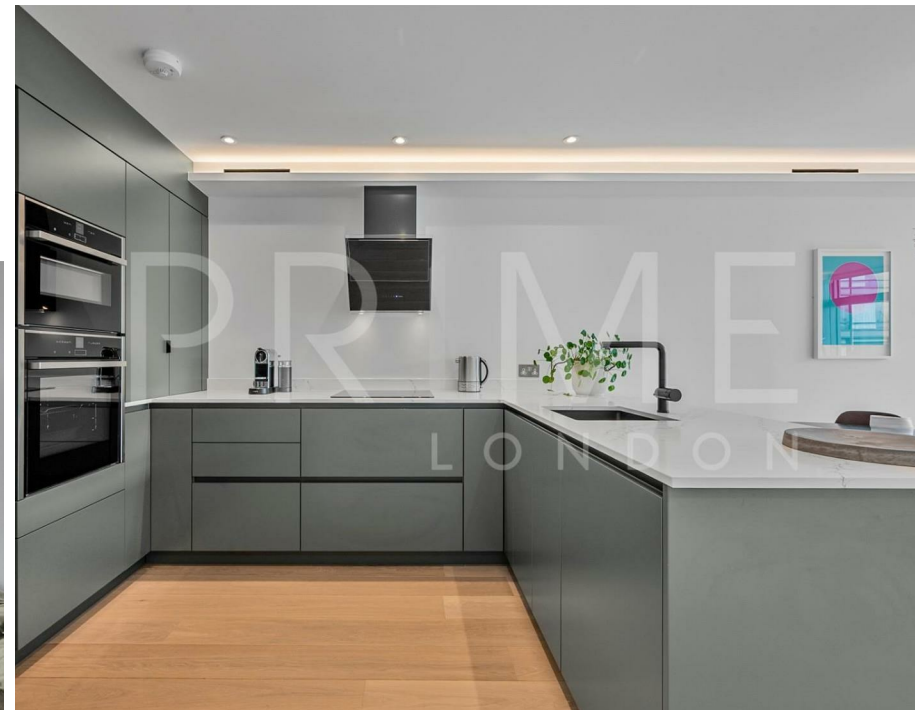
A fully redesigned and tastefully refurbished three bedroom apartment, showcasing the most iconic views of the River Thames and Houses of Parliament and comprising some 1,130 sq ft (104.95 sqm) of sophisticated air-conditioned living space, available for chain free sale through Prime London.

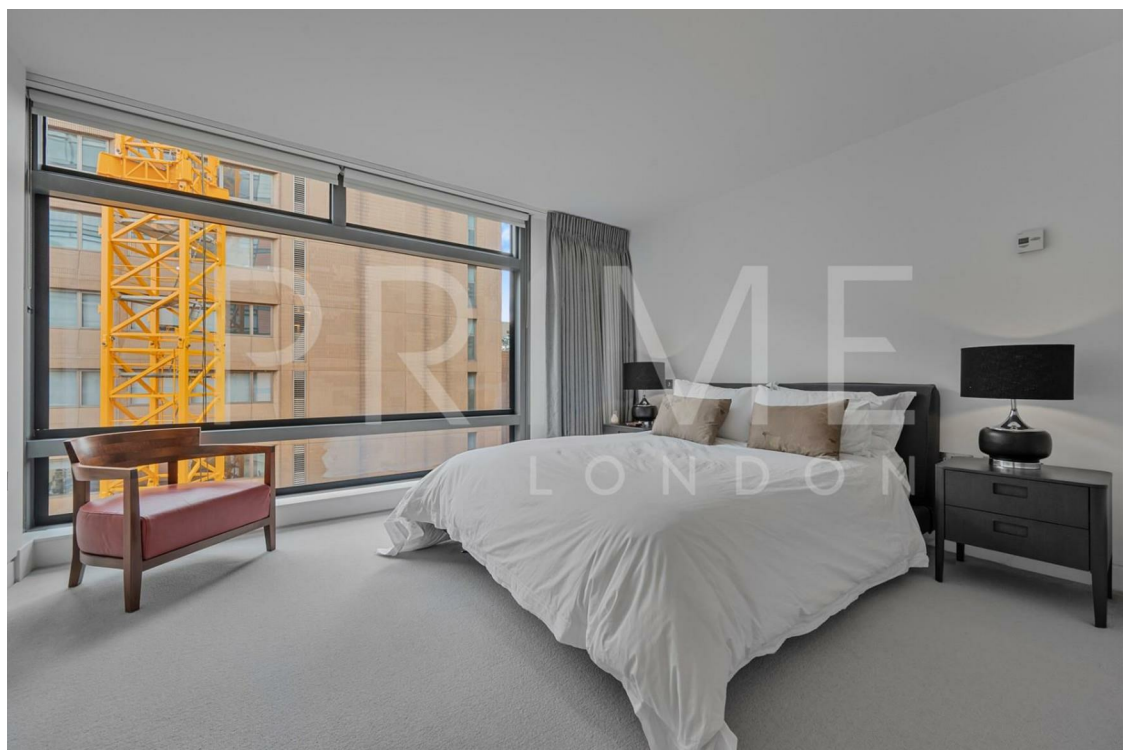
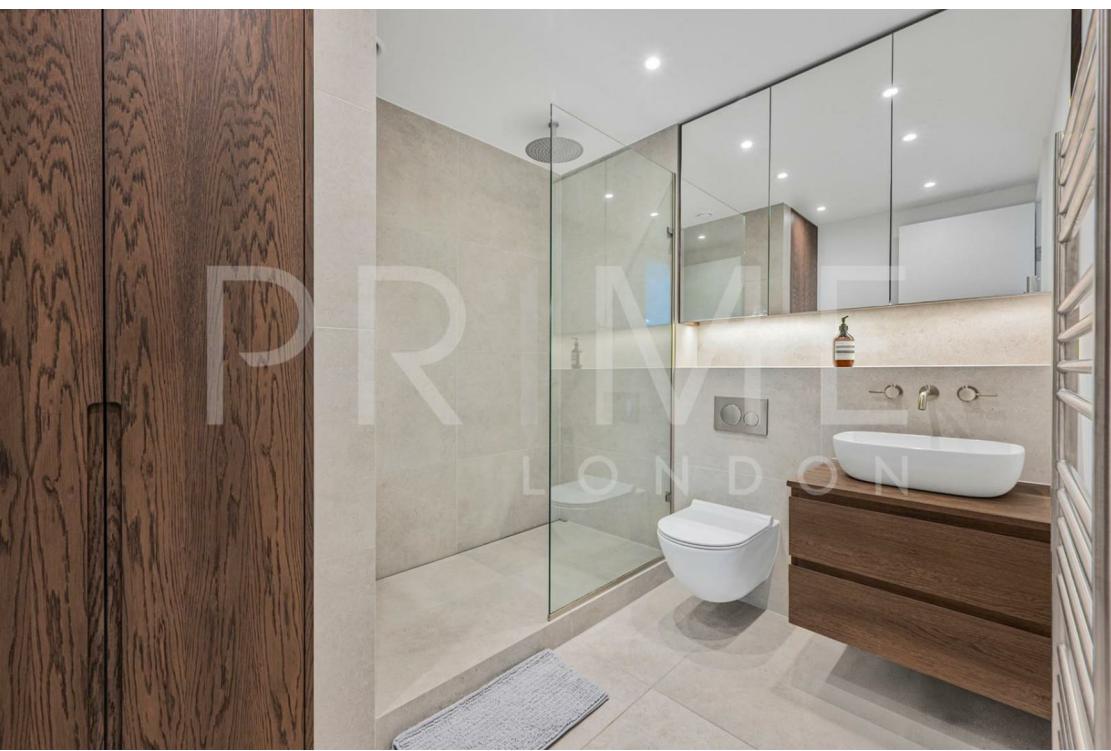
The property also includes with a secure parking space.

The apartment comprises a bright reception with exceptional views, an open fully fitted kitchen with Neff appliances, a primary bedroom with dressing area, substantial storage and en suite bathroom, a further two double bedrooms, and a separate family bathroom.

Parliament View itself offers a 24 hour concierge service, residents' gymnasium and an excellent location on the river between Lambeth and Vauxhall Bridge.

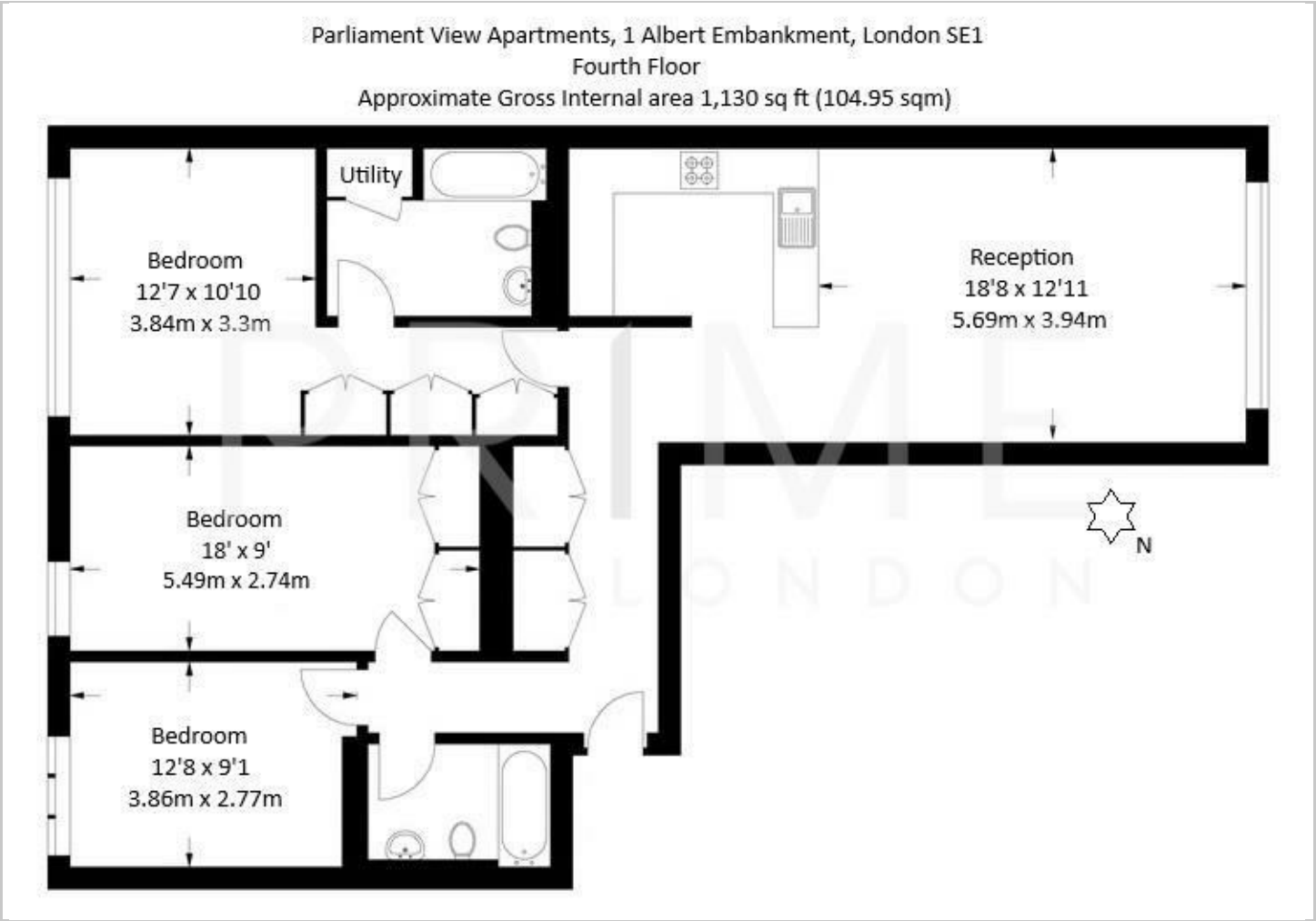
As a result the development is within easy reach of the West End, Westminster, the City and South Bank. Waterloo and Vauxhall rail and underground station are also both within walking distance of the property, making it easily accessible from all locations.







Floor Plans

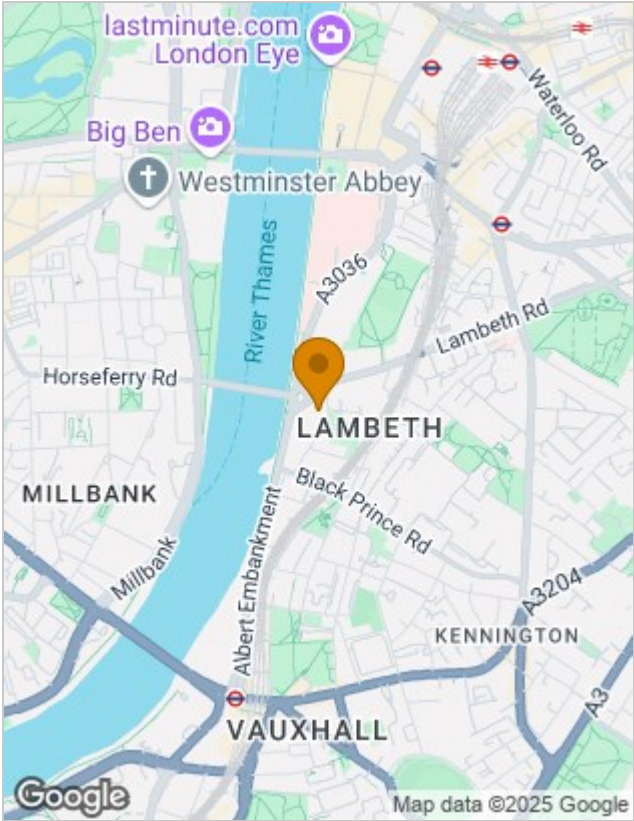


Viewing

By appointment. Contact us if you wish to arrange a viewing appointment for this property, or require further information.

The particulars are set out as a general outline only for the guidance of intended purchasers or lessees, and do not constitute, any part of a contract. Nothing in these particulars shall be deemed to be a statement that the property is in good structural condition or otherwise nor that any of the services, appliances, equipment or facilities are in good working order. Purchasers should satisfy themselves of this prior to purchasing.

Location Map



Energy Performance Graph

