

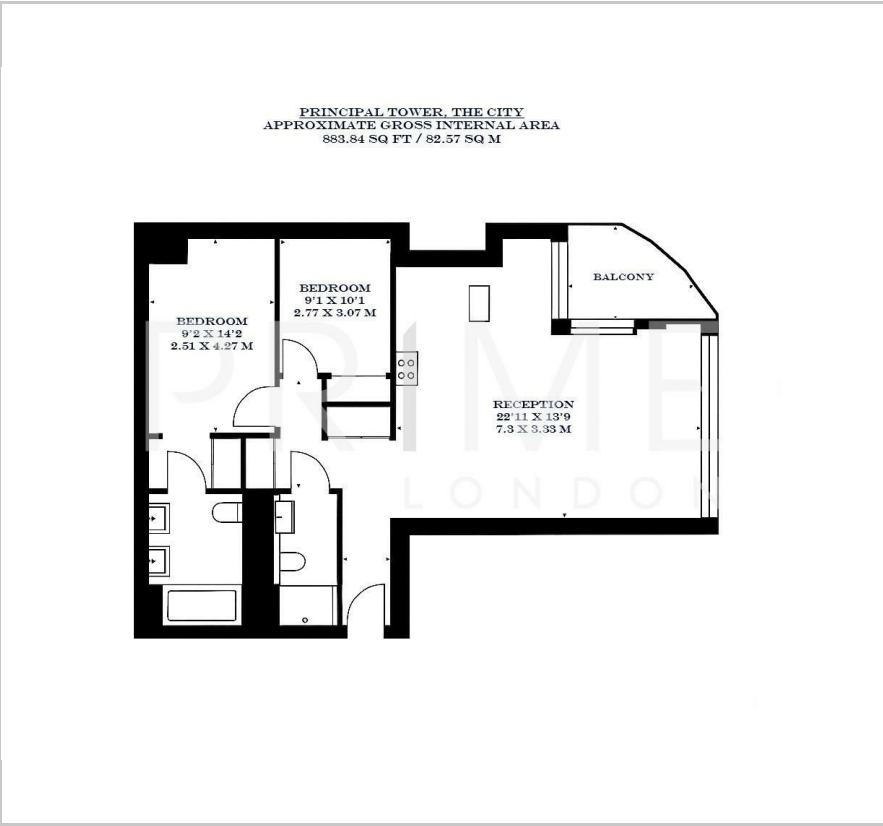
## Principal Tower

2 Principal Place, Worship Street, EC2A 2FF

£1,500 Per Week



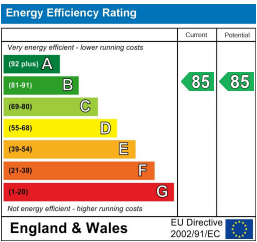
Floor Plan



Area Map



Energy Efficiency Graph



Viewing

By appointment. Contact us on 0207 052 1075 if you wish to arrange a viewing appointment for this property, or require further information.

- Two bedroom apartment
- Private balcony
- Residents' lounge, pool, gym and spa
- 883 sq ft (82 sqm)
- High floor with skyline views
- 24 hour concierge



This stunning two bedroom apartment, located in the sought after Principal Tower, is available for lease through Prime London.

Spanning approximately 883 sq ft (82 sqm), the property offers a bright and spacious dual-aspect living area, enhanced by floor-to-ceiling windows that open onto a generous private balcony. The sleek, modern kitchen is fully fitted with integrated appliances.

Both bedrooms are well proportioned and complemented by fitted wardrobes that provide excellent storage. The principal bedroom also benefits from a contemporary en suite bathroom.

Residents benefit from an outstanding range of on-site amenities, such as a 24 hour concierge, resident lounge, gym, cinema room, spa, and a pool.

Principal Tower features an exciting selection of cafés, bars, and restaurants, contributing to a vibrant community feel. It is moments from Liverpool Street station, connecting to Overground, TfL Rail, Greater Anglia, c2c, and several key Underground lines (Central, Circle, Hammersmith & City, and Metropolitan).



These particulars, whilst believed to be accurate are set out as a general outline only for guidance and do not constitute any part of an offer or contract. Intending purchasers should not rely on them as statements of representation of fact, but must satisfy themselves by inspection or otherwise as to their accuracy. No person in this firms employment has the authority to make or give any representation or warranty in respect of the property.