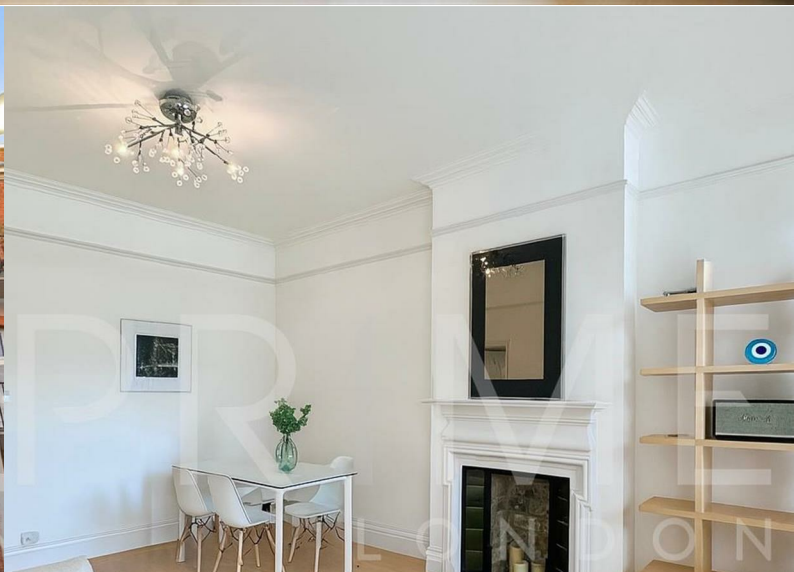


Argyll Mansions

303-323 Kings Road, Chelsea, SW3 5ER

£900 Per Week



1



1

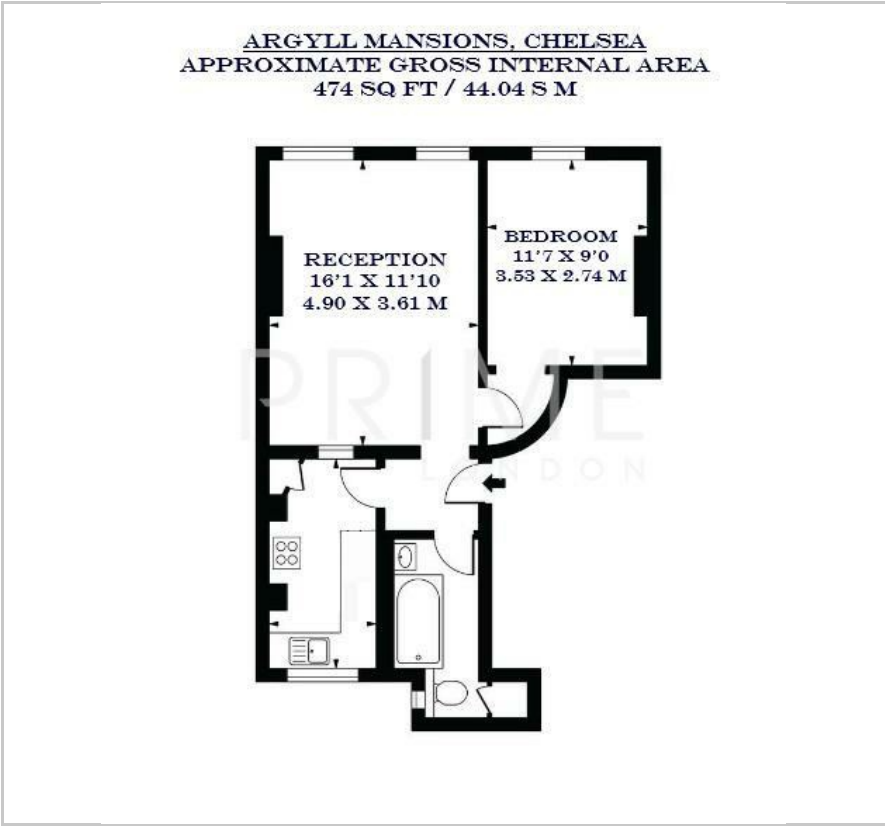


1

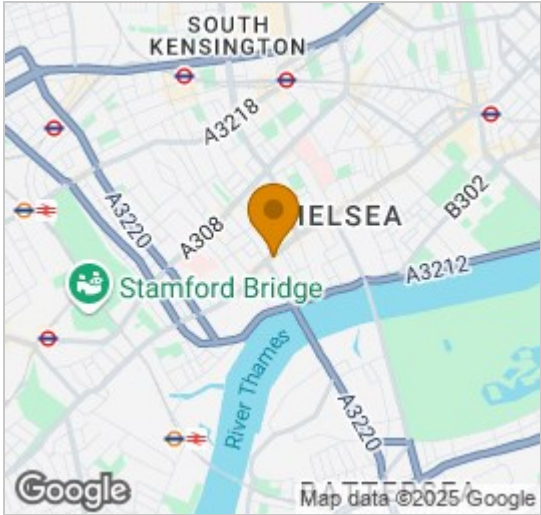


D

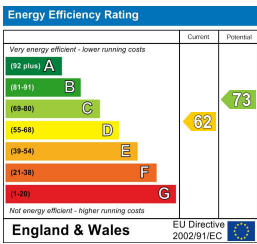
Floor Plan



Area Map



Energy Efficiency Graph



Viewing

By appointment. Contact us on 0207 052 1075 if you wish to arrange a viewing appointment for this property, or require further information.

- One bedroom apartment
- 474 sq ft (44.04 sqm)
- Flooded with natural light
- Separate fully equipped kitchen
- Located on the iconic King's Road
- Close proximity to South Kensington and Sloane Square



This beautifully presented one bedroom apartment, located in one of London's most desirable locations, is available for a short term lease through Prime London.

Totalling 474 sq ft (44.04 sqm), you are welcomed by a bright and spacious reception room, with large windows that flood the space with natural light and offer picturesque views of the iconic Bluebird restaurant. The separate kitchen is thoughtfully designed and fully equipped with essential modern appliances. The bedroom is well-lit with natural light and offers generous storage with a large wardrobe, and there is one modern bathroom.

Located in the heart of Chelsea, this property is just moments away from a variety of trendy cafes, boutiques, and galleries on the vibrant King's Road

This property also benefits from the convenience of transport links, with close proximity to South Kensington and Sloane Square underground stations.



These particulars, whilst believed to be accurate are set out as a general outline only for guidance and do not constitute any part of an offer or contract. Intending purchasers should not rely on them as statements of representation of fact, but must satisfy themselves by inspection or otherwise as to their accuracy. No person in this firms employment has the authority to make or give any representation or warranty in respect of the property.