



## Compass House

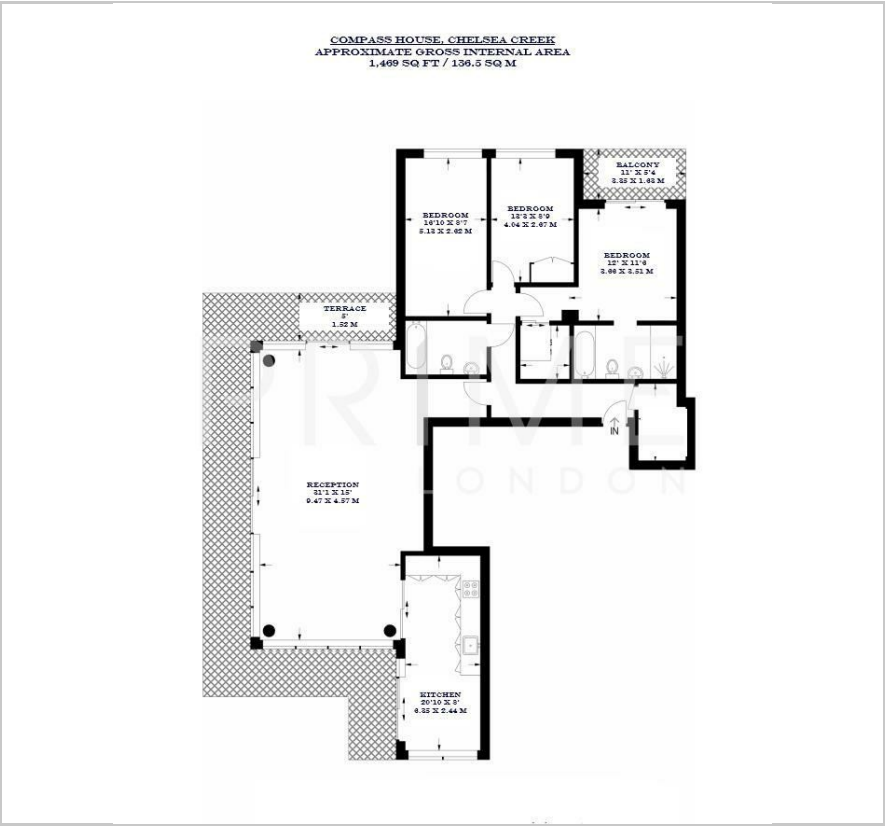
5 Park Street, Chelsea Creek, SW6 2FB

**£1,700 Per Week**





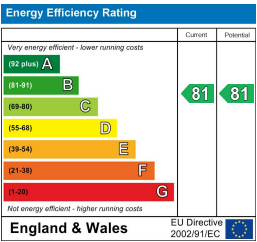
Floor Plan



Area Map



Energy Efficiency Graph



Viewing

By appointment. Contact us on 0207 052 1075 if you wish to arrange a viewing appointment for this property, or require further information.

- Sub penthouse apartment
- 1,475 sq ft (137 sqm)
- Wraparound balcony with Moments from Imperial skyline views
- Wharf Station
- Residents' gym, pool, spa and 24 hour concierge communal gardens



This beautifully presented three bedroom sub penthouse apartment, located within the prestigious Chelsea Creek development, is available for lease through Prime London.

Set on a high floor, the apartment offers approximately 1,475 sq ft (137 sqm) of stylish, contemporary living space that has been recently redecorated to a high standard. The spacious open plan reception room is flooded with natural light through floor to ceiling windows and opens onto a stunning wraparound balcony that provides far-reaching views over the landscaped gardens and city skyline. The reception flows seamlessly into a sleek, fully integrated kitchen and breakfast area, finished with high quality cabinetry and modern appliances.

The principal bedroom is a luxurious retreat, complete with its own private balcony, excellent built in storage, and a beautifully appointed en suite bathroom. Two further double bedrooms are generously sized and share a contemporary guest bathroom. A separate utility room offers additional convenience, and the entire home is finished in a soft, neutral palette with premium flooring and elegant design details throughout.

Residents of Chelsea Creek enjoy access to an exceptional range of lifestyle amenities, including a private gym, spa, 24-hour concierge, and beautifully maintained communal gardens.

The development is perfectly positioned just moments from Imperial Wharf Station and within walking distance of the shops, restaurants, and galleries of King's Road, offering a unique blend of tranquil riverside living and vibrant city life.



These particulars, whilst believed to be accurate are set out as a general outline only for guidance and do not constitute any part of an offer or contract. Intending purchasers should not rely on them as statements of representation of fact, but must satisfy themselves by inspection or otherwise as to their accuracy. No person in this firms employment has the authority to make or give any representation or warranty in respect of the property.