



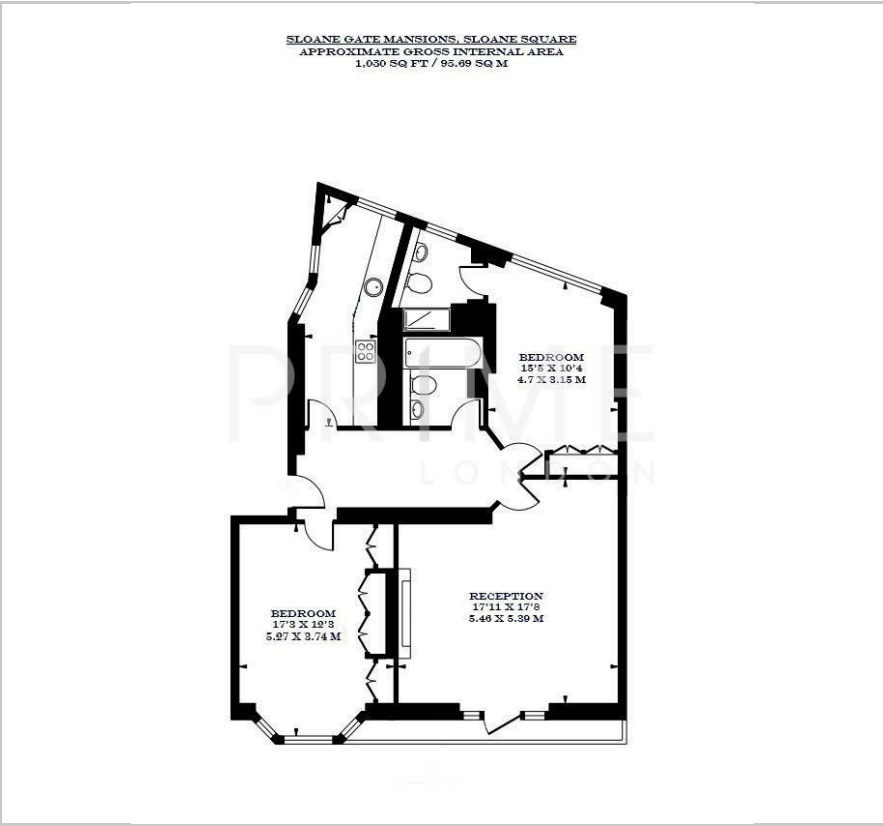
Sloane Gate Mansions

D'oyley Street, Sloane Square, SW1X 9AG

£1,400 Per Week



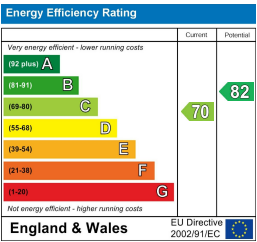
Floor Plan



Area Map



Energy Efficiency Graph



Viewing

By appointment. Contact us on 0207 052 1075 if you wish to arrange a viewing appointment for this property, or require further information.

- Two bedroom apartment
- Well proportioned bedrooms
- Short walk to King's Road and Duke of York Square
- 1,030 sq ft (96 sqm)
- Lift access
- 0.2 miles to Sloane Square station



This charming two bedroom property, situated moments from the elegant Sloane Square in a well maintained period building, is available for lease through Prime London.

The property spans 1,030 sq ft (96 sqm) and features two generously sized bedrooms, each featuring ample built in storage and a bright, tranquil ambiance. The principal bedroom includes a modern double wardrobe system, while the second bedroom also enjoys excellent natural light and built in cupboards,

The bright reception area and kitchen have been finished to a high standard, offering a functional layout. The bathroom is contemporary and features clean tiling and quality fittings.

Located in the heart of Chelsea, just a short stroll from Sloane Square station (Circle and District lines), the apartment benefits from exceptional transport connections and the boutique amenities of King's Road and Duke of York Square.



These particulars, whilst believed to be accurate are set out as a general outline only for guidance and do not constitute any part of an offer or contract. Intending purchasers should not rely on them as statements of representation of fact, but must satisfy themselves by inspection or otherwise as to their accuracy. No person in this firms employment has the authority to make or give any representation or warranty in respect of the property.