

8 Chesham Street

Belgravia, SW1X 8DT

£1,384 Per Week



2



2



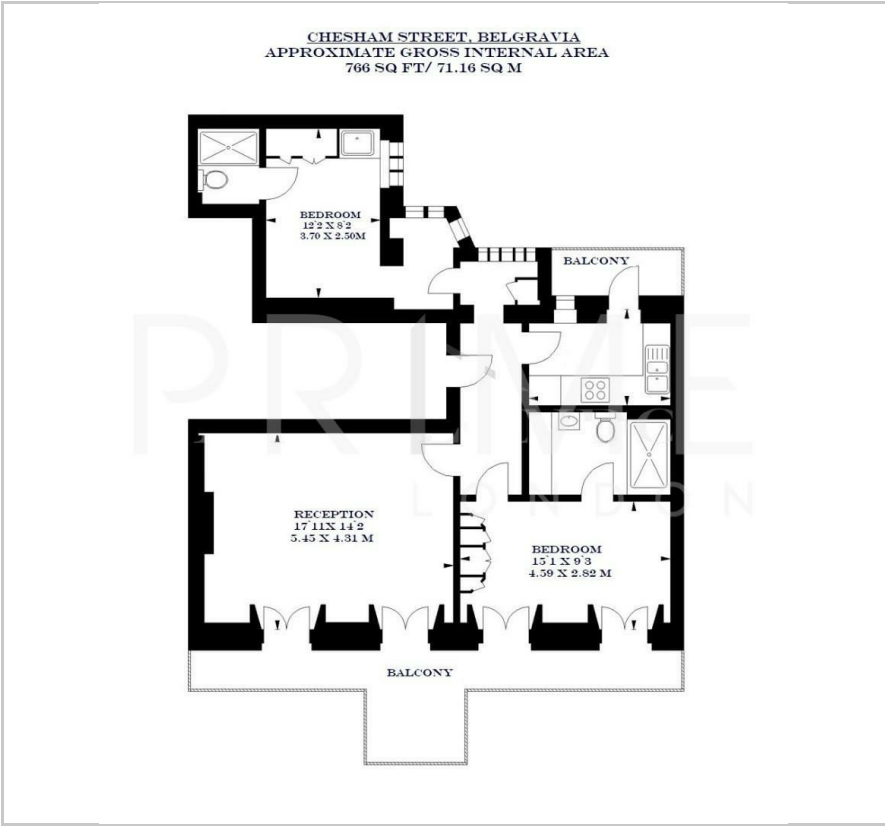
1



E



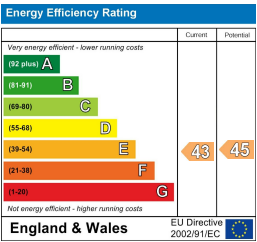
Floor Plan



Area Map



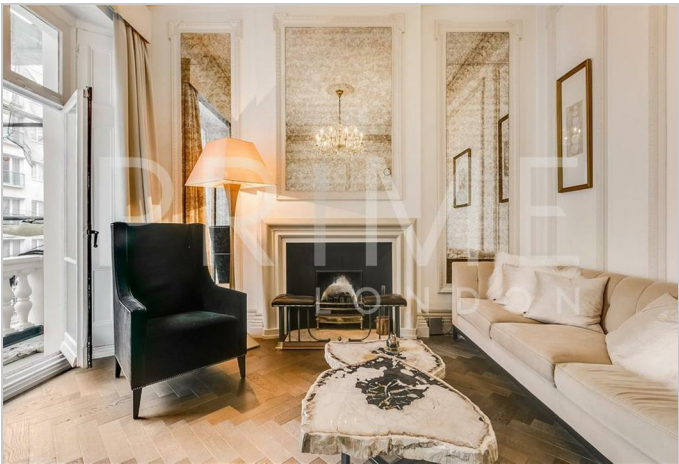
Energy Efficiency Graph



Viewing

By appointment. Contact us on 0207 052 1075 if you wish to arrange a viewing appointment for this property, or require further information.

- Elegant apartment
- 766 sq ft (71.6 sqm)
- Stunning and bright reception
- Large terrace room
- Refurbished
- Interior designed

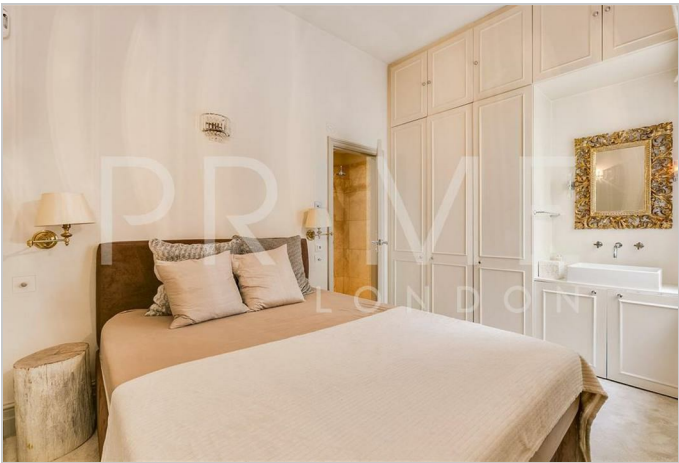


This elegant two bedroom apartment, situated in the heart of Belgravia, is available for lease through Prime London.

The apartment features two spacious double bedrooms, two modern bathrooms, and two private balconies.

Meticulously interior designed, the property also offers a well-equipped separate kitchen and a beautifully appointed living area, perfect for both entertaining and relaxation.

Located just moments from Sloane Square and Elizabeth Street, residents will enjoy access to an array of high-end shops, world-class restaurants, and charming cafes.



These particulars, whilst believed to be accurate are set out as a general outline only for guidance and do not constitute any part of an offer or contract. Intending purchasers should not rely on them as statements of representation of fact, but must satisfy themselves by inspection or otherwise as to their accuracy. No person in this firm's employment has the authority to make or give any representation or warranty in respect of the property.