

Wren House

190 The Strand, WC2R 1AB

£923 Per Week



0



1

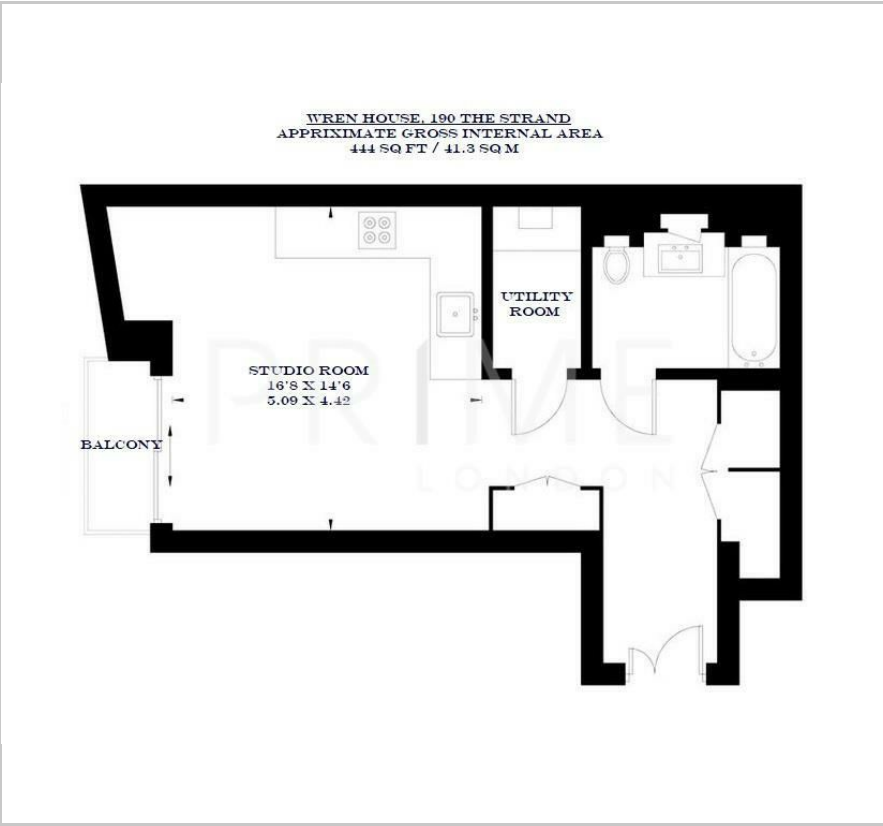


1



B

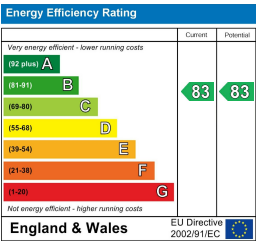
Floor Plan



Area Map



Energy Efficiency Graph



Viewing

By appointment. Contact us on 0207 052 1075 if you wish to arrange a viewing appointment for this property, or require further information.

- Studio apartment
- Incredible finishes throughout
- 444 sq ft (41.3 sqm)
- Ideal central location
- Residents gym, health spa, and cinema room
- 24 hour concierge



This modern and luxurious studio apartment is ideally located in a tranquil spot within the prestigious 190 Strand development. Just moments from the River Thames and Covent Garden, the property is available for lease through Prime London.

Boasting a refined design and spanning 444 sq ft (41.3 sqm), the apartment features a open-plan reception area, complemented by a modern kitchen with integrated Miele appliances. Notable features include comfort cooling, solid parquet wood flooring, balcony, and a convenient laundry closet.

Residents of 190 Strand enjoy an array of exceptional amenities, including a 24 hour concierge service, a private cinema, a state-of-the-art gym, and a swimming pool with a spa.

The development's prime location offers the perfect blend of cultural excitement and peaceful riverside living. Situated between the iconic River Thames and the vibrant Covent Garden, it provides easy access to renowned theatres, fine dining, and luxury shopping.



These particulars, whilst believed to be accurate are set out as a general outline only for guidance and do not constitute any part of an offer or contract. Intending purchasers should not rely on them as statements of representation of fact, but must satisfy themselves by inspection or otherwise as to their accuracy. No person in this firms employment has the authority to make or give any representation or warranty in respect of the property.