

## Drake House

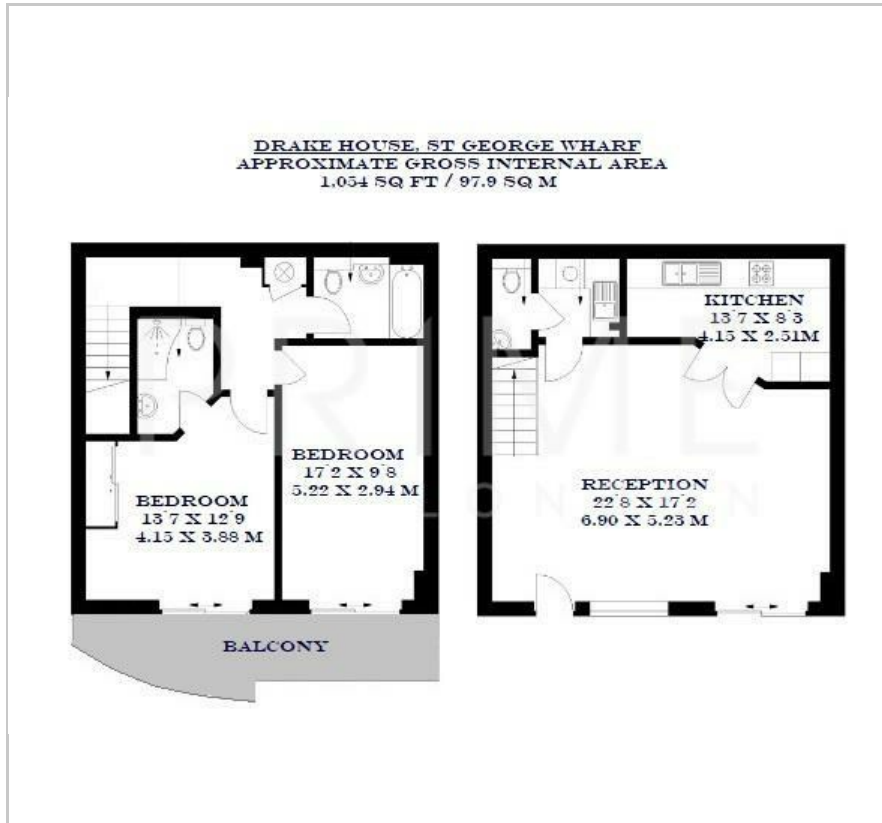
St George Wharf, SW8 2LR

Asking Price £975,000

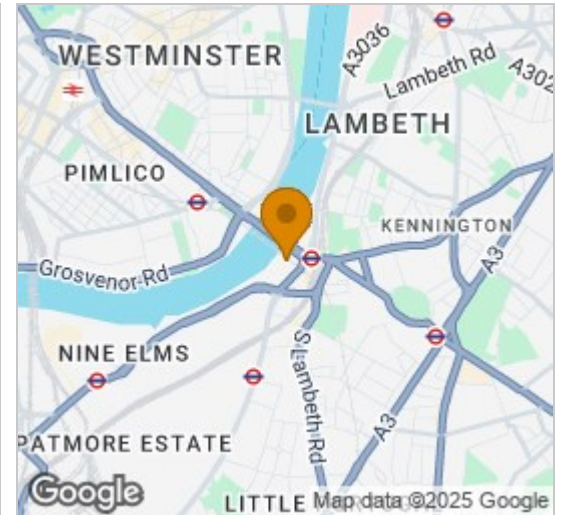




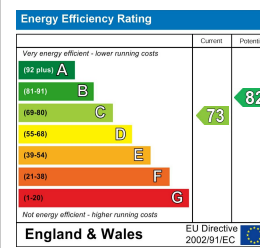
## Floor Plan



## Area Map



## Energy Efficiency Graph



## Viewing

By appointment. Contact us on 0207 928 6663 if you wish to arrange a viewing appointment for this property, or require further information.

- Duplex apartment
- 1,054 sq ft (97.9 sqm)
- Large terrace and private balcony
- 24 hour concierge

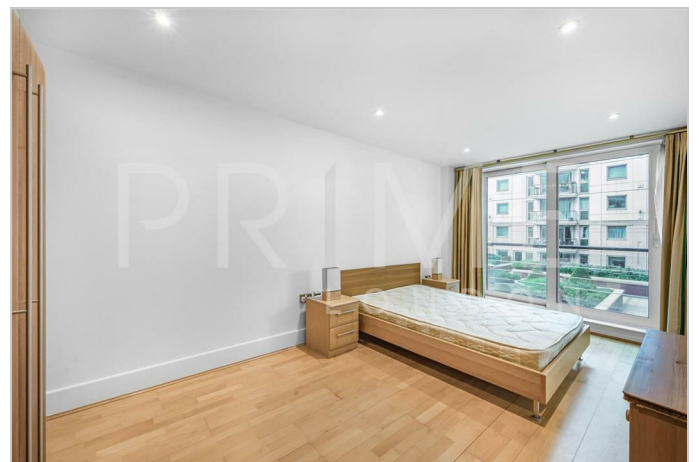


With an expansive internal space, this 1,054 sq ft (97.9 sqm) two bedroom, two bathroom duplex apartment is available for chain free sale exclusively through Prime London.

The property offers a bright reception and terrace, with the river on your doorstep. Two large double bedrooms (master with en suite) with balcony access, separate kitchen, utility room and WC complete the accommodation.

This apartment benefits from the fantastic transport links afforded by this very well kept complex by The River Thames. St George Wharf offers on site riverside bars and restaurants such as Waterfront London, The Riverside, Four Degree and Pop Art Sushi as well as direct access to Vauxhall Underground Station on the Victoria Line.

For additional convenience other on site outlets include Tesco Express, Pret a Manger, Hudson's Dry Cleaners, Riverside Medical Centre & Dental Spa and more.



These particulars, whilst believed to be accurate are set out as a general outline only for guidance and do not constitute any part of an offer or contract. Intending purchasers should not rely on them as statements of representation of fact, but must satisfy themselves by inspection or otherwise as to their accuracy. No person in this firm's employment has the authority to make or give any representation or warranty in respect of the property.