



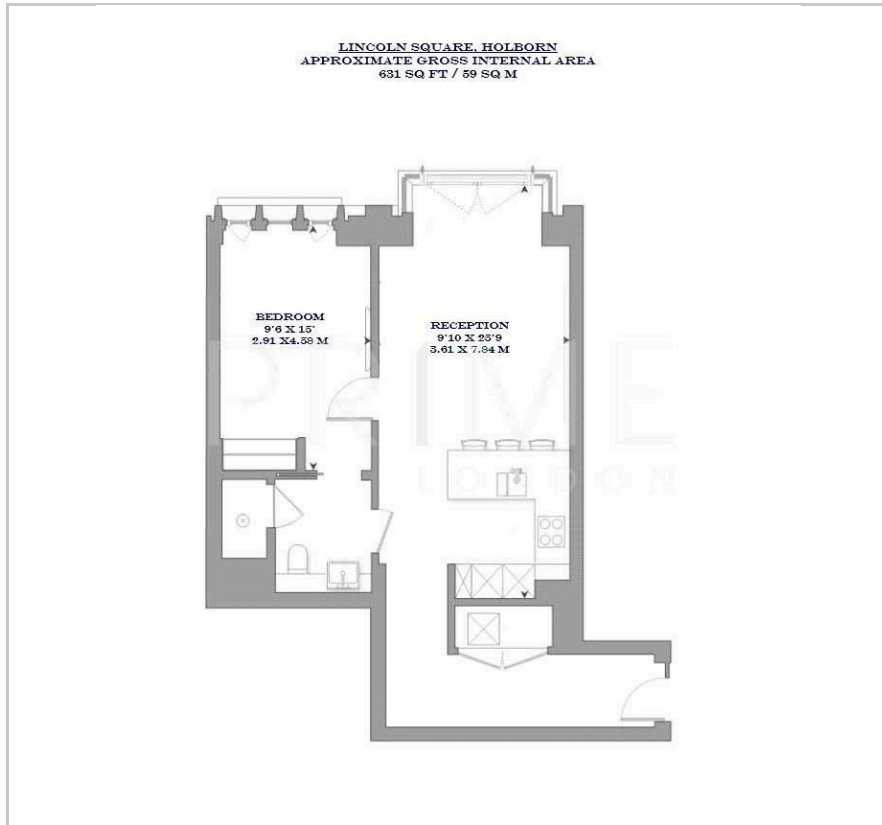
Lincoln Square

18 Portugal Street, WC2A 2AT

£1,130 Per Week



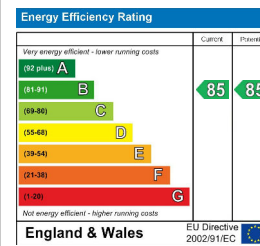
Floor Plan



Area Map



Energy Efficiency Graph



Viewing

By appointment. Contact us on 0207 052 1075 if you wish to arrange a viewing appointment for this property, or require further information.

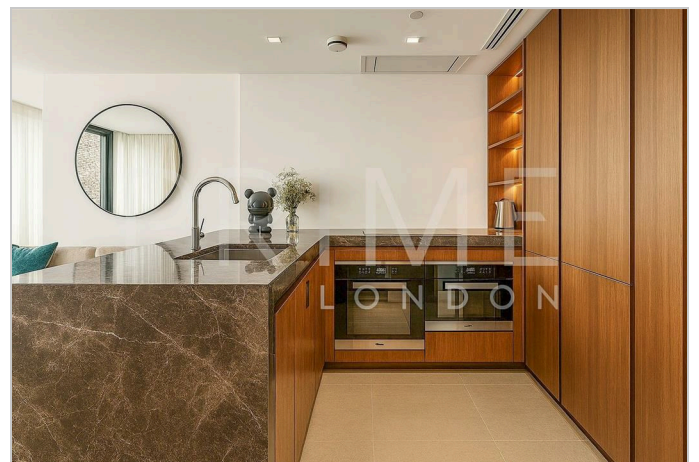
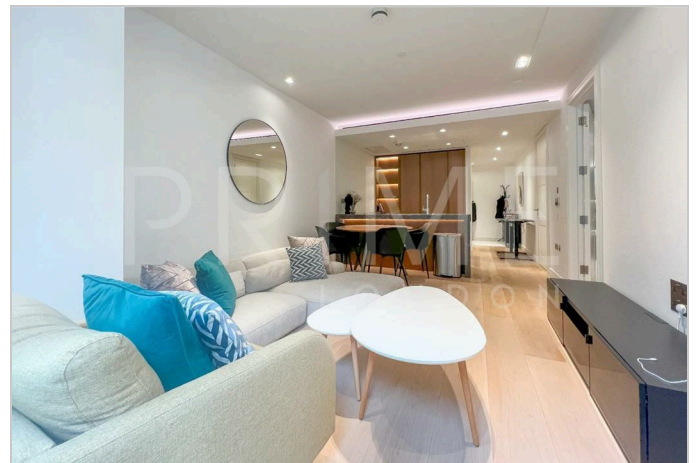
- One bedroom apartment ▪ 631 sq ft (59 sqm)
- Fully furnished to a high standard ▪ Ample storage throughout
- Perfectly positioned between Holborn, Temple and Covent Garden ▪ 24 hour concierge

This beautifully presented 631 sq ft (59 sqm) one bedroom apartment, located in the luxurious Lincoln Square, is available for lease through Prime London.

The property features a bright and well proportioned living and dining area that seamlessly flows into a sleek open-plan kitchen, complete with integrated appliances and ample storage. The separate bedroom space includes fitted wardrobes and a high quality en-suite bathroom finished with contemporary materials.

Residents benefit from access to exceptional on site amenities, including a 24 hour concierge, private gym, swimming pool, spa, library, and snooker room.

Located moments from Holborn, Covent Garden and Temple stations, the apartment provides excellent connectivity across London, while also being surrounded by the cultural and culinary attractions of the West End.



These particulars, whilst believed to be accurate are set out as a general outline only for guidance and do not constitute any part of an offer or contract. Intending purchasers should not rely on them as statements of representation of fact, but must satisfy themselves by inspection or otherwise as to their accuracy. No person in this firm's employment has the authority to make or give any representation or warranty in respect of the property.