



## North Block

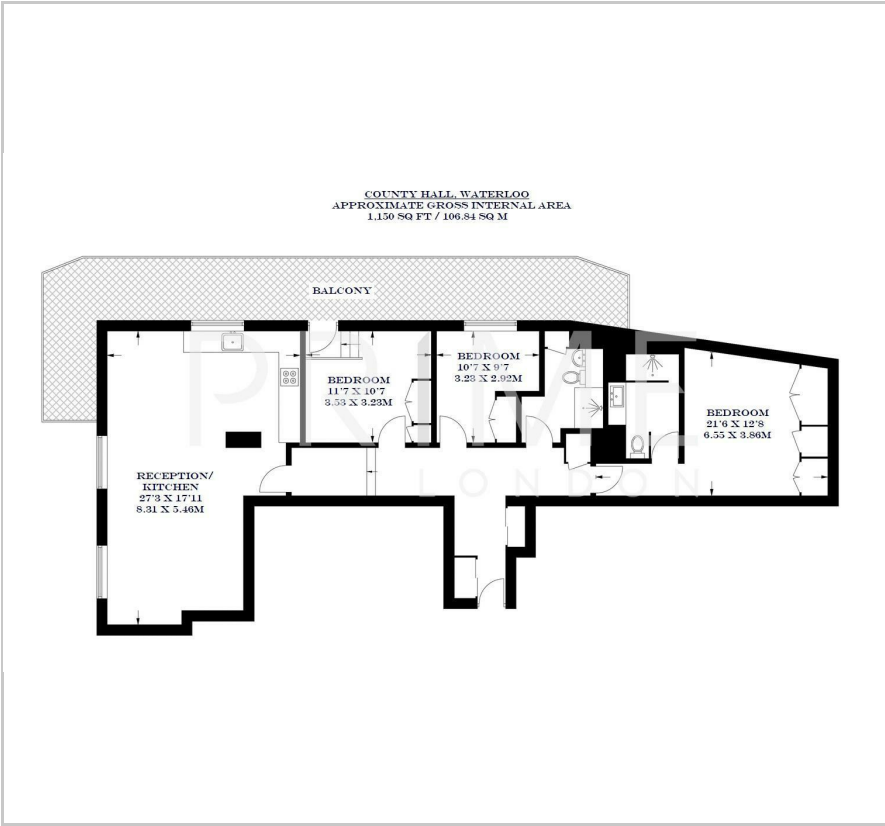
County Hall Apartments, South Bank, SE1 7PN

£1,500 Per Week





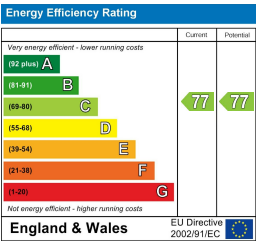
Floor Plan



Area Map



Energy Efficiency Graph



Viewing

By appointment. Contact us on 0207 928 6663 if you wish to arrange a viewing appointment for this property, or require further information.

- Refurbished apartment
- 1,150 sq ft (106.84 sqm)
- Large private terrace with views of London Eye
- Fully furnished
- Indoor heated swimming pool
- Gymnasium and spa pool



This refurbished three bedroom apartment of 1,150 sq ft (106.84 sqm) is offered on a fully furnished basis, benefits from a large wrap around terrace, and is available to rent through Prime London in County Hall Apartments, South Bank.

The property also comes with a secure parking space.

This property has an excellent view of the London Eye from the balcony, and has been finished to a high standard throughout. The property also boasts a large open plan kitchen/reception room, large main bedroom with en-suite and built in wardrobes, two further double bedrooms with excellent storage, and a further family bathroom.

County Hall itself is located immediately by the London Eye, and residents enjoy the exclusive use of the on-site facilities, namely a 24 hour concierge service and leisure complex complete with indoor heated swimming pool, gymnasium and spa.

The development is ideally situated for travel into the City, Canary Wharf and West End as Waterloo and Westminster stations are close by.



These particulars, whilst believed to be accurate are set out as a general outline only for guidance and do not constitute any part of an offer or contract. Intending purchasers should not rely on them as statements of representation of fact, but must satisfy themselves by inspection or otherwise as to their accuracy. No person in this firm's employment has the authority to make or give any representation or warranty in respect of the property.