



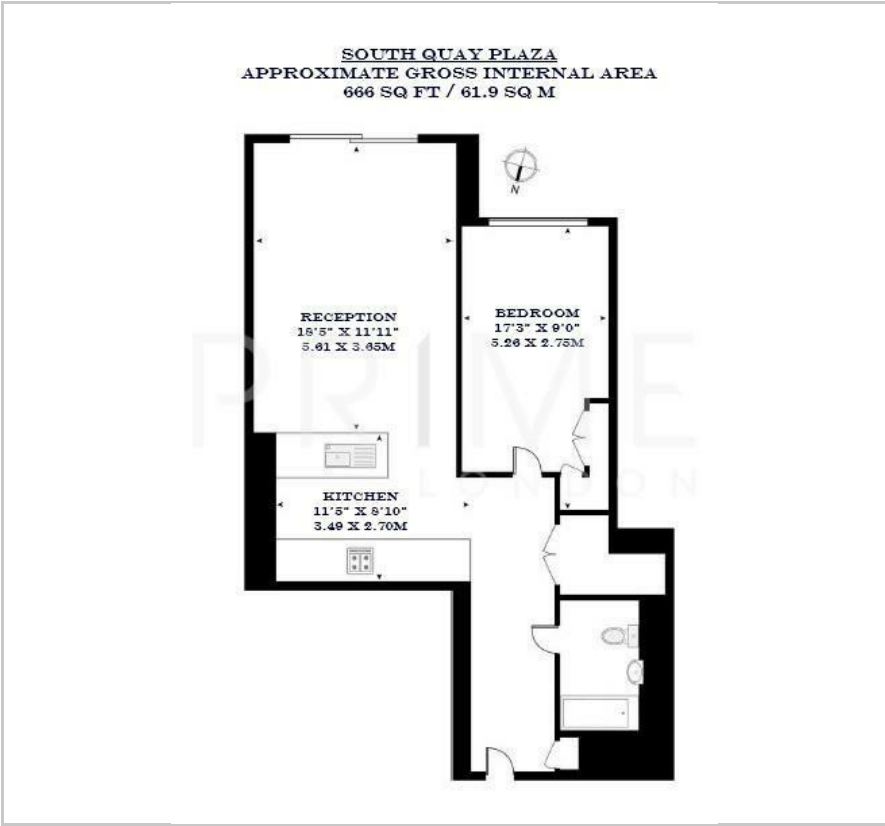
Hampton Tower

75 Marsh Wall, South Quay Plaza, E14 9TT

Asking Price £640,000



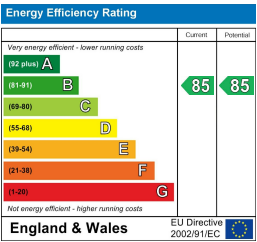
Floor Plan



Area Map



Energy Efficiency Graph



Viewing

By appointment. Contact us on 0207 928 6663 if you wish to arrange a viewing appointment for this property, or require further information.

- One bedroom apartment
- Views of the River Thames
- Gym and 20m swimming pool
- 666 sqft (61.9 sqm)
- 56th floor bar and terrace
- 24 hour concierge



This high floor one bedroom apartment, set facing the River Thames within the high-end development South Quay Plaza, is available for chain free sale through Prime London.

The 666 sq ft (61.9 sqm) apartment offers a open-plan kitchen and has large floor to ceiling windows, offering truly stunning views of the City and River Thames. The apartment has a spacious bedroom with a built-in wardrobe and following on to a family bathroom.

Every resident will become exclusive members of The Quay Club, providing 5-star facilities including a state of the art gym, 20m swimming pool overlooking the South Dock, business lounge, screening room and private dining room as well as the stunning 56th floor bar and terrace, offering incredible views of the city skyline.

Located just a few moments from the heart of London's financial district, it will stand within 2.6 acres of beautiful landscaped gardens and over 150 new trees, feeling like an urban oasis. At the heart of the park, new cafes and restaurants will provide places to meet and socialise, all by the water's edge of the South Dock.



These particulars, whilst believed to be accurate are set out as a general outline only for guidance and do not constitute any part of an offer or contract. Intending purchasers should not rely on them as statements of representation of fact, but must satisfy themselves by inspection or otherwise as to their accuracy. No person in this firms employment has the authority to make or give any representation or warranty in respect of the property.