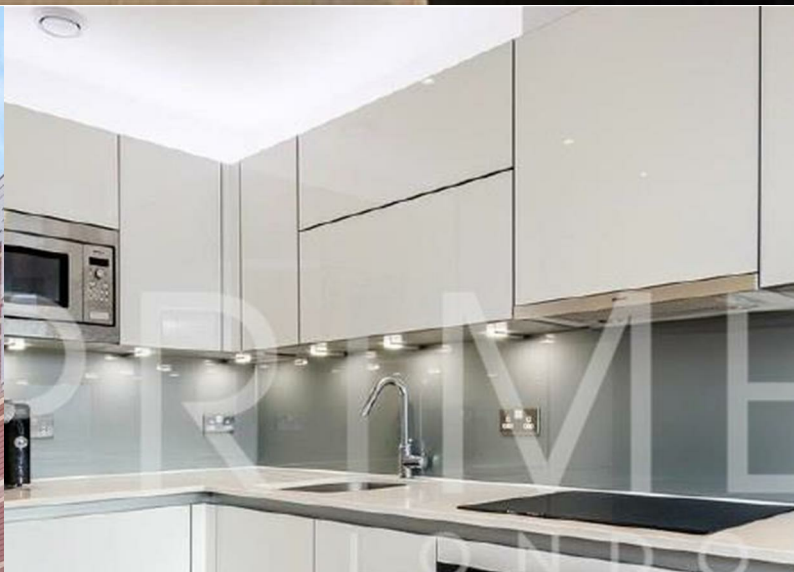


## Parliament House

81 Black Prince Road, SE1 7SZ

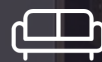
£577 Per Week



1



1

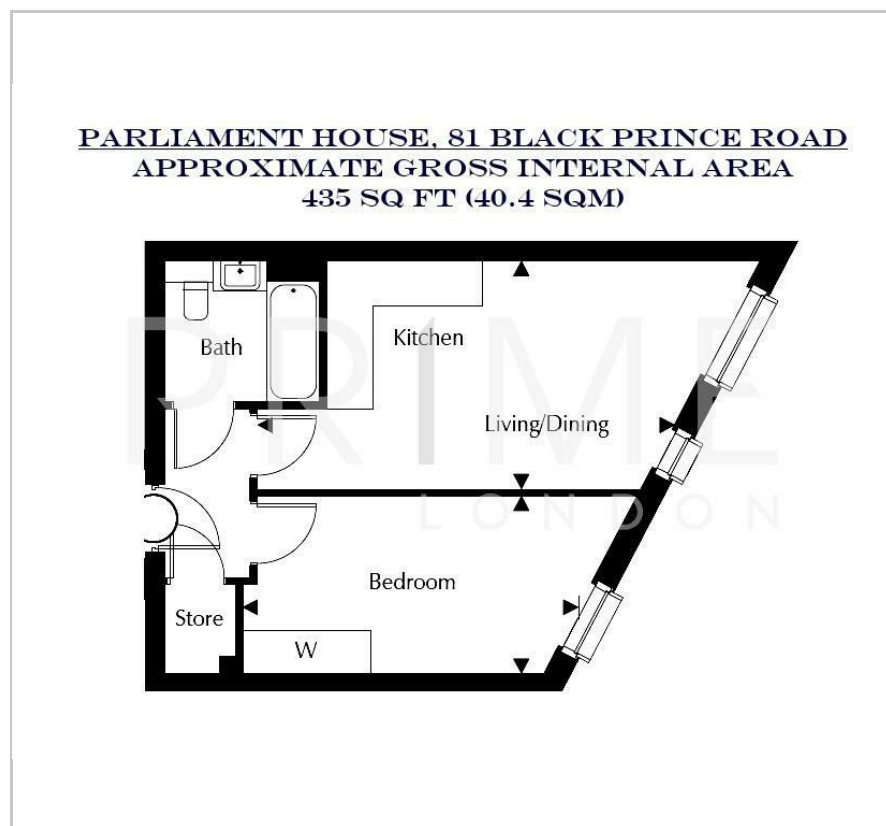


1

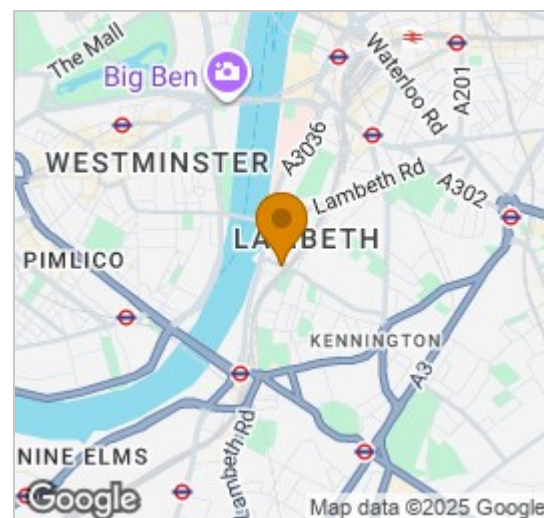


B

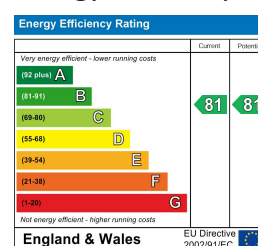
## Floor Plan



## Area Map



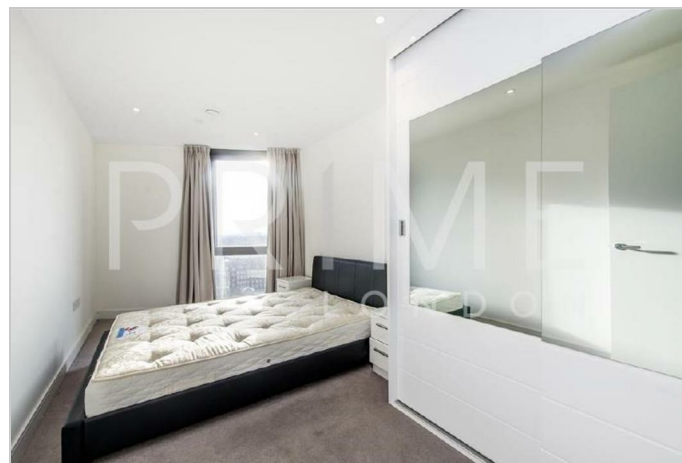
## Energy Efficiency Graph



## Viewing

By appointment. Contact us on 0207 928 6663 if you wish to arrange a viewing appointment for this property, or require further information.

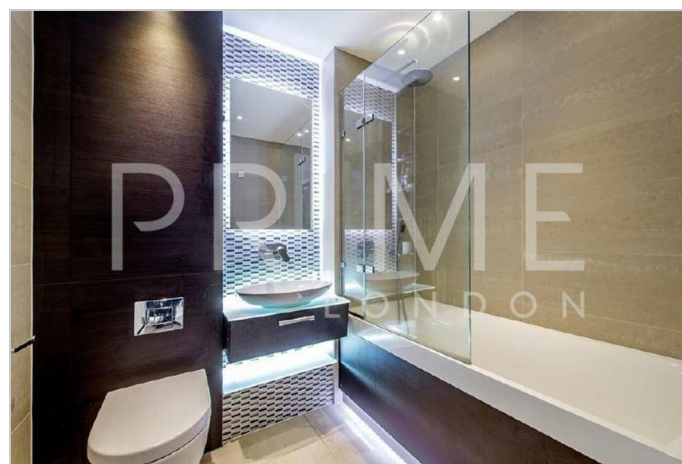
- South facing
- Excellently located
- Luxurious finishes
- Furnished
- Residents' terrace, private gymnasium
- Concierge service



This high specification and fully furnished south facing one bedroom apartment, situated on a higher floor of Parliament House, is available for lease through Prime London.

Parliament House is an excellently located development within walking distance of the South Bank and West End.

The development offers luxurious finishes to apartments and communal areas, features a residents' terrace, private gymnasium and a concierge service and has Westminster and Vauxhall Stations within walking distance.



These particulars, whilst believed to be accurate are set out as a general outline only for guidance and do not constitute any part of an offer or contract. Intending purchasers should not rely on them as statements of representation of fact, but must satisfy themselves by inspection or otherwise as to their accuracy. No person in this firm's employment has the authority to make or give any representation or warranty in respect of the property.

Palace View, 131 Lambeth Road, London SE1 7BT | 21 Grosvenor Gardens, Belgravia, London SW1W 0BP

Tel: 0207 928 6663 | 0207 052 1075 Email: [Office@PrimeLondonResidential.com](mailto:Office@PrimeLondonResidential.com) [www.PrimeLondonResidential.com](http://www.PrimeLondonResidential.com)