



Kenchester Close

Nine Elms, SW8 2TZ

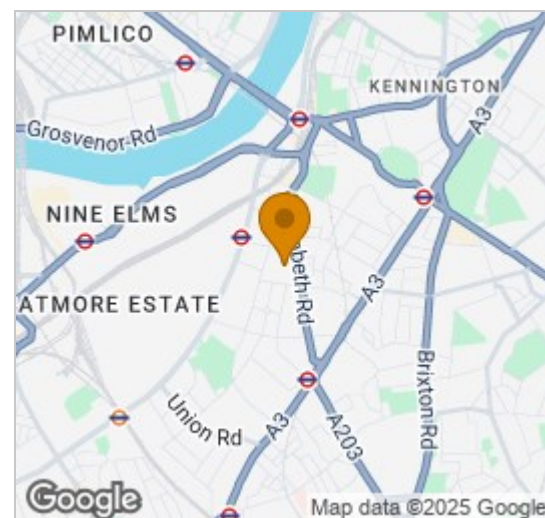
£1,269 Per Week



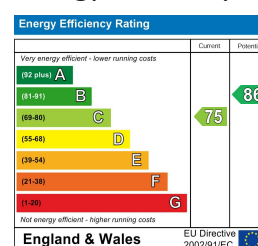
Floor Plan



Area Map



Energy Efficiency Graph



Viewing

By appointment. Contact us on 0207 928 6663 if you wish to arrange a viewing appointment for this property, or require further information.

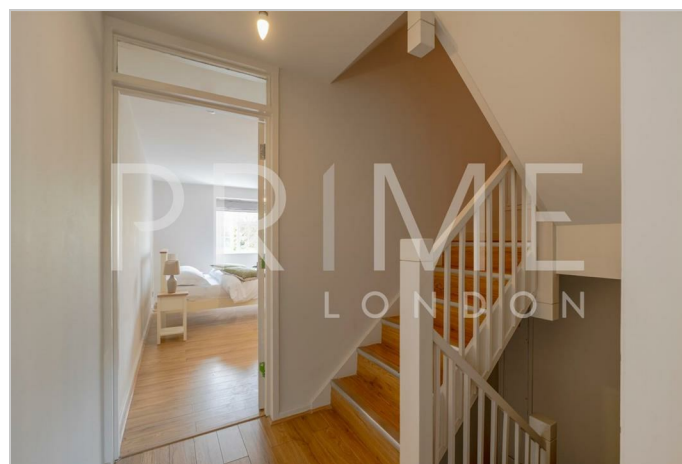
- Four bedroom house
- Excellent condition
- Private garden
- Close proximity to Nine Elms Underground



This beautifully presented four bedroom house on Kenchester Close is ideally located in the heart of Nine Elms, and is available to rent fully furnished through Prime London.

Recently refurbished to a high standard and offered in excellent condition, the property offers generous family living across three floors. It comprises four well proportioned bedrooms, a spacious open plan kitchen, dining and reception area, and a superb private garden, perfect for entertaining or enjoying quiet outdoor space.

Positioned on a quiet residential street, the house is just a short walk from Vauxhall Park and The Oval. Both Nine Elms and Oval underground stations are within easy reach, offering excellent transport links into the City, West End and beyond.



These particulars, whilst believed to be accurate are set out as a general outline only for guidance and do not constitute any part of an offer or contract. Intending purchasers should not rely on them as statements of representation of fact, but must satisfy themselves by inspection or otherwise as to their accuracy. No person in this firm's employment has the authority to make or give any representation or warranty in respect of the property.

Palace View, 131 Lambeth Road, London SE1 7BT | 21 Grosvenor Gardens, Belgravia, London SW1W 0BP

Tel: 0207 928 6663 | 0207 052 1075 Email: Office@PrimeLondonResidential.com www.PrimeLondonResidential.com