



The Corniche

24 Albert Embankment, SE1 7GJ

£1,038 Per Week



2



2

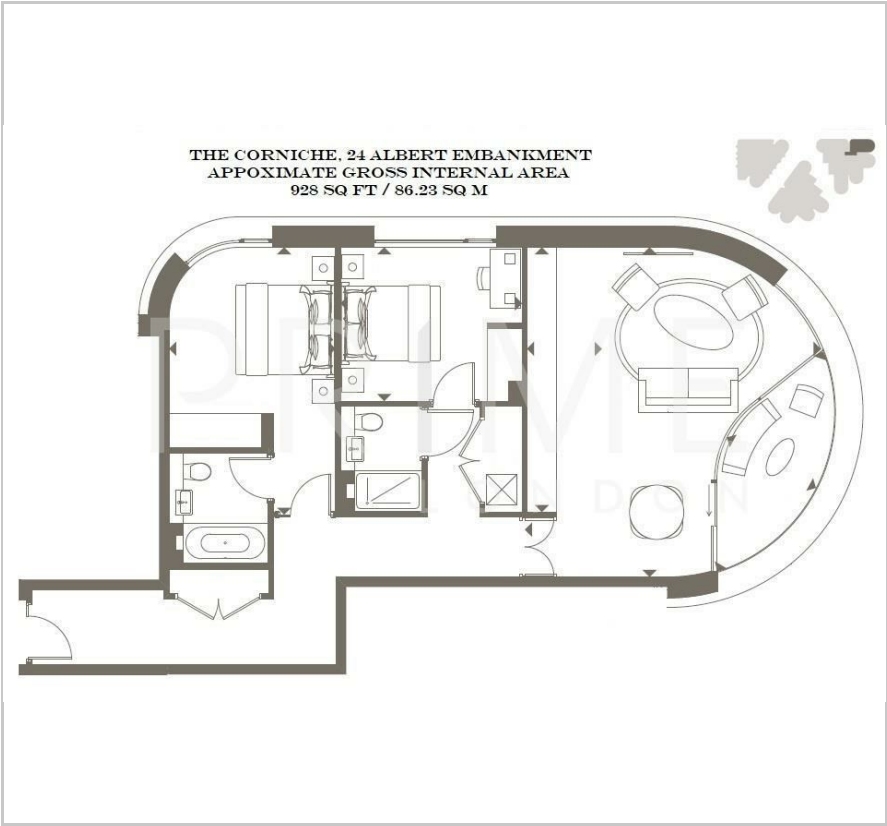


1

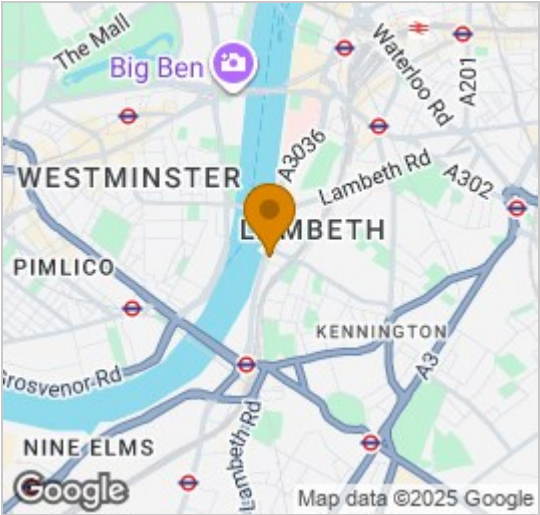


B

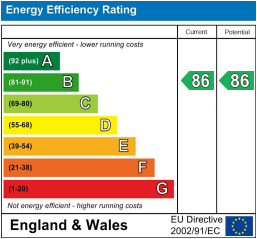
Floor Plan



Area Map



Energy Efficiency Graph



Viewing

By appointment. Contact us on 0207 928 6663 if you wish to arrange a viewing appointment for this property, or require further information.

- Fully furnished
- Private balcony
- 24 hour concierge
- Two bedrooms
- 928 sq ft (86.21 sqm)
- Resident's facilities



A modern and bright south-facing 928 sq ft (86.21 sqm) two bedroom apartment with balcony, available to rent exclusively through Prime London in The Corniche, 24 Albert Embankment.

Located in an enviable position on the bank of the River Thames, The Corniche (designed by Foster & Partners) is located within reach of many key London landmarks, namely the Houses of Parliament and the River Thames, and also the Tate Britain and London Eye.

The development includes extensive residents facilities, including ten pin bowling & games room, infinity pool, gym and spa facilities, cinema, residents' rooftop bar, 24 hour concierge service and also commercial spaces with restaurants and cafes focused around a well considered and inviting public space.



These particulars, whilst believed to be accurate are set out as a general outline only for guidance and do not constitute any part of an offer or contract. Intending purchasers should not rely on them as statements of representation of fact, but must satisfy themselves by inspection or otherwise as to their accuracy. No person in this firms employment has the authority to make or give any representation or warranty in respect of the property.