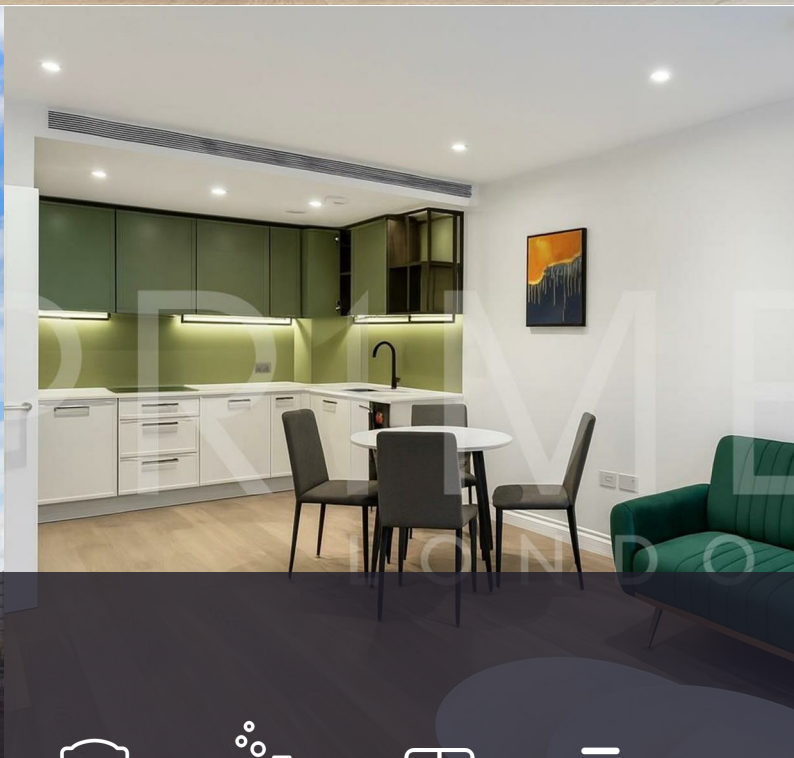


## Westwood Building

4 Lockgate Road, Chelsea Creek, SW6 2LY

£692 Per Week



1



1



1



B

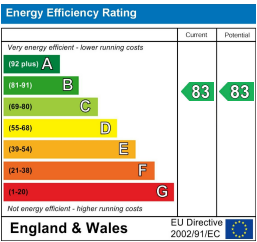
Floor Plan



Area Map



Energy Efficiency Graph



Viewing

By appointment. Contact us on 0207 052 1075 if you wish to arrange a viewing appointment for this property, or require further information.

- One bedroom apartment
- 549 sq ft (51 sqm)
- Fully furnished to a high standard
- Residents' gym, pool, spa, and communal gardens
- Short walk to Imperial Wharf Station
- 24 hour concierge

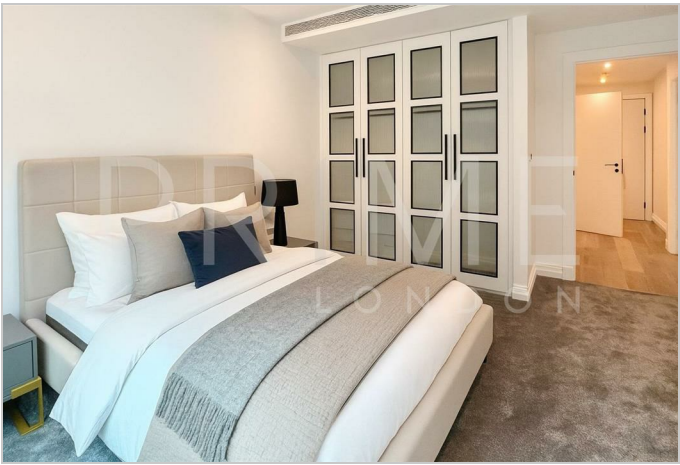


This beautifully presented one bedroom apartment, located in Westwood Building in the prestigious Chelsea Creek development, is available for lease through Prime London.

Offering 549 sq ft (51 sqm) of living space, the property features an open plan concept, with floor to ceiling windows that flood the room with natural light, and a sleek, fully fitted kitchen with integrated appliances. The bedroom is well proportioned, complemented by high quality finishes.

Residents at Chelsea Creek enjoy access to a range of facilities, including a spa with its heated indoor swimming pool, sauna, steam room, treatment rooms and gym. The development itself is known for its landscaped waterways, and 24 hour concierge, offering convenience and tranquillity.

Westwood House is moments from Imperial Wharf Station for Overground and rail connections, with Fulham Broadway Underground just a short walk away. Chelsea's King's Road is also nearby, providing ample options for shopping and dining.



These particulars, whilst believed to be accurate are set out as a general outline only for guidance and do not constitute any part of an offer or contract. Intending purchasers should not rely on them as statements of representation of fact, but must satisfy themselves by inspection or otherwise as to their accuracy. No person in this firm's employment has the authority to make or give any representation or warranty in respect of the property.