

The Whiteley

159 Queensway, W2 4BL

£10,000 Per Week



3



3



1



B

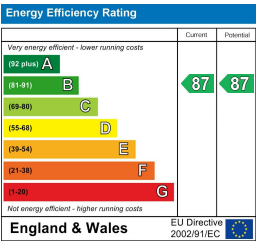
Floor Plan



Area Map



Energy Efficiency Graph



Viewing

By appointment. Contact us on 0207 052 1075 if you wish to arrange a viewing appointment for this property, or require further information.

- Three bedroom apartment
- 3,128 sq ft (291 sqm)
- Exceptional 4.2m ceilings
- Short walk to Hyde Park
- Residents' access to Six Senses Hotel facilities
- 24 hour concierge

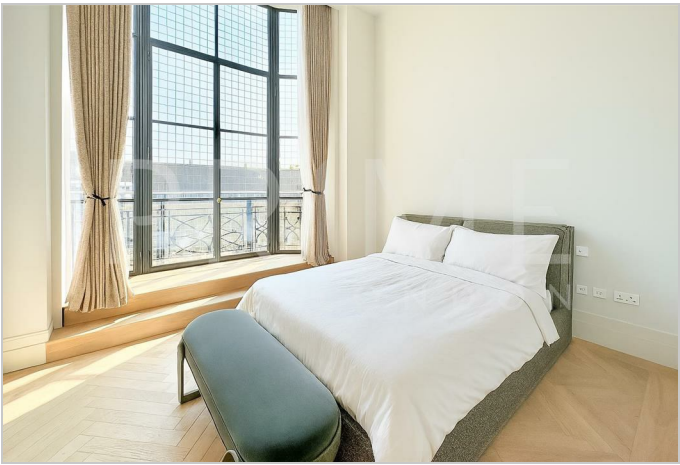


This beautiful 3,128 sq ft (291 sqm) three bedroom apartment, set within the iconic Whiteley development, is available for lease through Prime London.

Offering thoughtfully designed living space, the property features impressive ceiling heights and high-spec finishes throughout. The striking open-plan reception and dining space are bathed in natural light from a series of elegant arched windows, and seamlessly connected to a bespoke kitchen fitted with Gaggenau appliances.

The master bedroom offers generous proportions, complete with a walk-in dressing area and a luxurious marble en-suite bathroom featuring a bath. Two further generously sized bedrooms, each with their own en-suite bathrooms and bespoke fitted wardrobes, offer comfort and privacy for family or guests.

Residents benefit from access to the Six Senses Hotel and Spa, a range of boutique shops and restaurants, 24 hour concierge, and excellent transport connectivity, all within a landmark destination in the heart of Bayswater.



These particulars, whilst believed to be accurate are set out as a general outline only for guidance and do not constitute any part of an offer or contract. Intending purchasers should not rely on them as statements of representation of fact, but must satisfy themselves by inspection or otherwise as to their accuracy. No person in this firm's employment has the authority to make or give any representation or warranty in respect of the property.