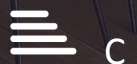




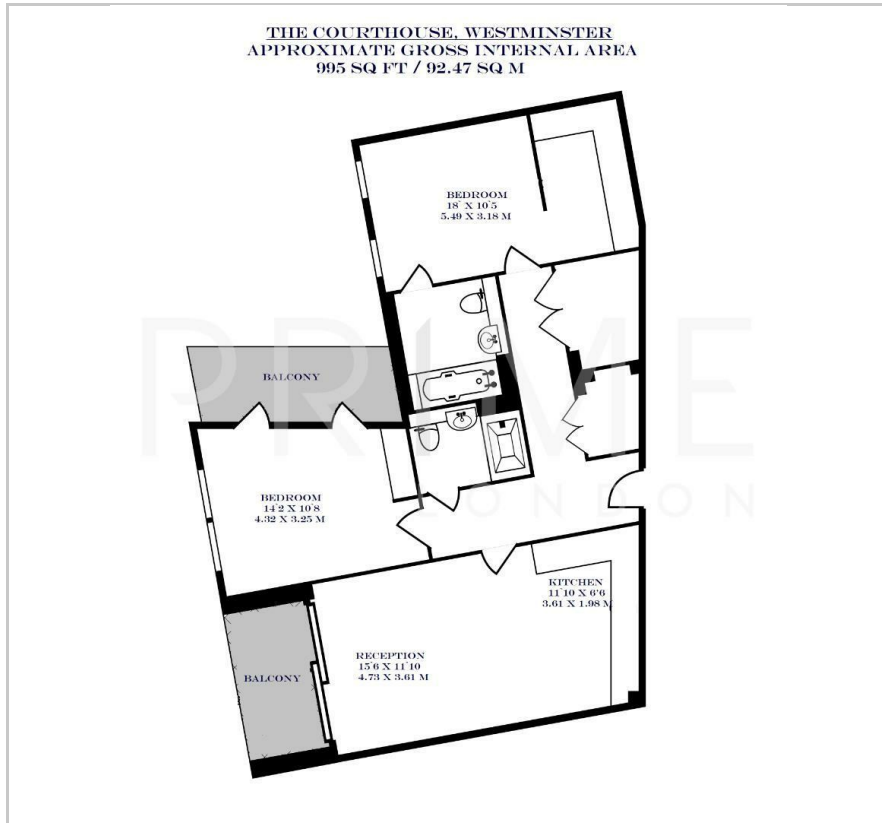
The Courthouse

70 Horseferry Road, Westminster, SW1P 2AY

£1,150 Per Week



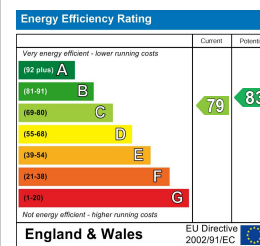
Floor Plan



Area Map



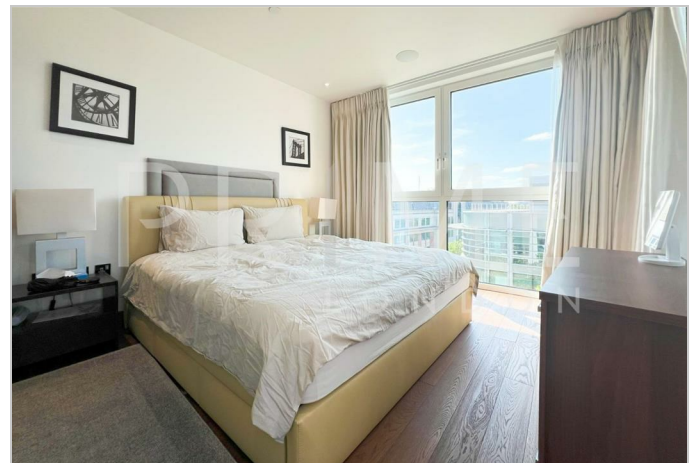
Energy Efficiency Graph



Viewing

By appointment. Contact us on 0207 052 1075 if you wish to arrange a viewing appointment for this property, or require further information.

- **Luxury two bedroom** ▪ **995 sq ft (92.47 sqm)** apartment
- **Two Private balconies** ▪ **Furnished**
- **Landscaped gardens and a** ▪ **24 hour concierge service** residents' fitness centre



This luxurious two bedroom apartment of 995 sq ft (92.47 sq m), benefitting from two private balconies, is available for lease in this in the prestigious Courthouse development through Prime London.

The property features a sizeable reception with access to two balconies, an open plan fully-fitted kitchen, two double bedrooms (all with fitted wardrobes), two bathrooms (ensuite in main bedroom) and utility cupboards.

The apartment also features underfloor heating, comfort cooling and recessed lighting.

This exciting addition to Westminster features a concierge service, landscaped gardens and a residents' fitness centre, making this the ideal home or London base.



These particulars, whilst believed to be accurate are set out as a general outline only for guidance and do not constitute any part of an offer or contract. Intending purchasers should not rely on them as statements of representation of fact, but must satisfy themselves by inspection or otherwise as to their accuracy. No person in this firm's employment has the authority to make or give any representation or warranty in respect of the property.