

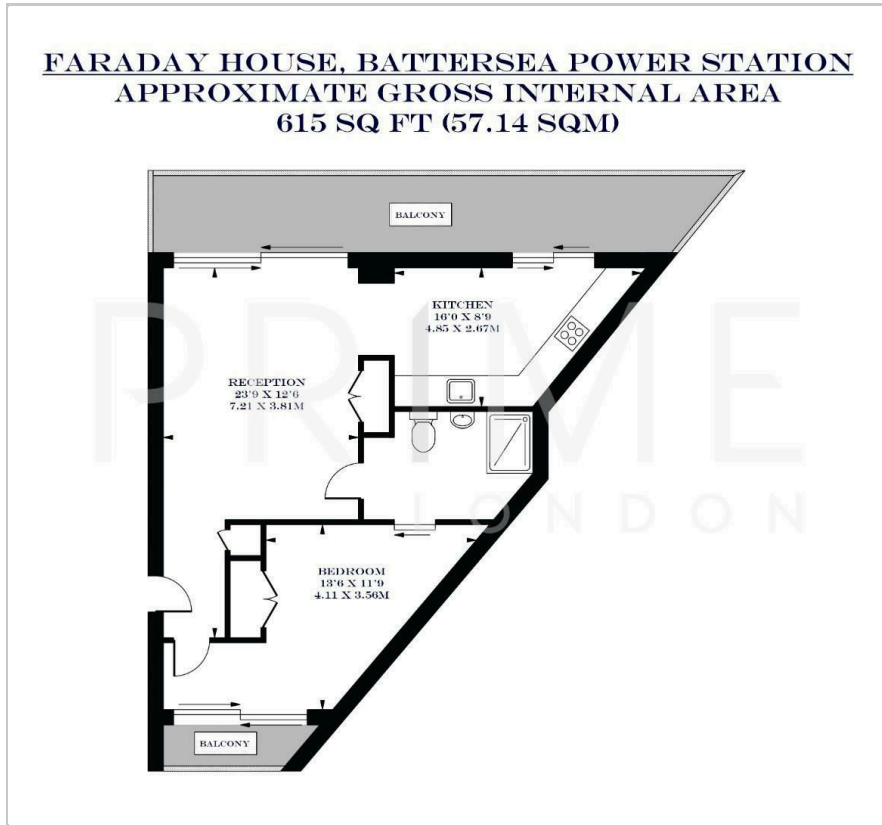
Faraday House

Battersea Power Station, SW11 8ED

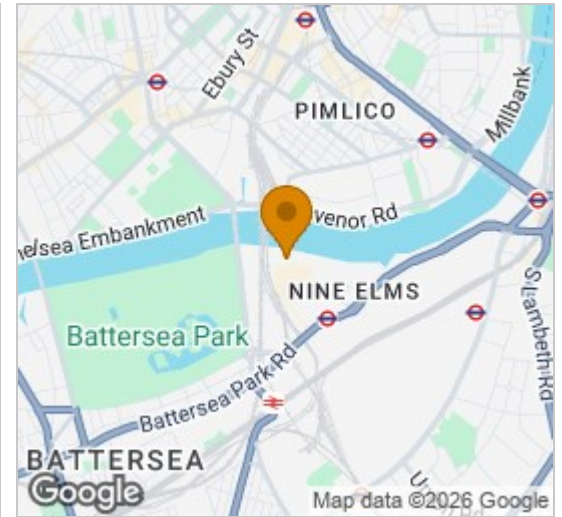
£773 Per Week



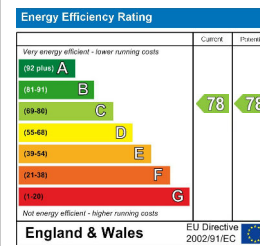
Floor Plan



Area Map



Energy Efficiency Graph



Viewing

By appointment. Contact us on 0207 928 6663 if you wish to arrange a viewing appointment for this property, or require further information.

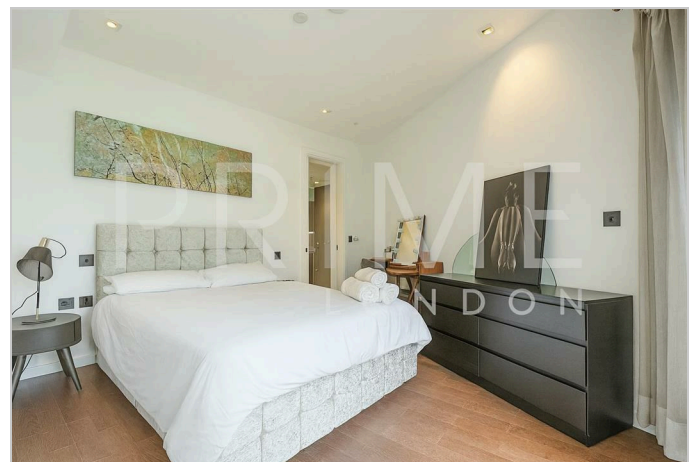
- One bedroom apartment
- Two private balconies
- Residents' gym, swimming pool and spa
- 615 sq ft (57.14 sqm)
- Fully furnished
- 24 hour concierge

This front to back, fully furnished one bedroom apartment totalling 615 sq ft (57.14 sqm) includes two balconies, with views from the reception towards Chelsea Bridge and the River Thames, and views of the communal gardens from the bedroom, and is available to rent through Prime London in the Battersea Power Station.

Finished to a very high standard throughout, this apartment comprises of open plan fully equipped and integrated kitchen and reception room leading to a full length private balcony.

The property further comprises a well-proportioned double bedroom with fitted wardrobes and a separate family bathroom.

Resident facilities include a first-class 24 hour concierge, on-site gym, swimming pool and spa, cinema, games room, meeting room and all day restaurant. Located next to the River Thames, this luxury apartment is ideally located for Chelsea, Battersea Park and the tube and rail stations nearby.



These particulars, whilst believed to be accurate are set out as a general outline only for guidance and do not constitute any part of an offer or contract. Intending purchasers should not rely on them as statements of representation of fact, but must satisfy themselves by inspection or otherwise as to their accuracy. No person in this firm's employment has the authority to make or give any representation or warranty in respect of the property.