



The Whiteley, 159 Queensway, W2 4BL

£10,000 Per Week





£10,000 Per Week

The Whiteley

159 Queensway, W2 4BL

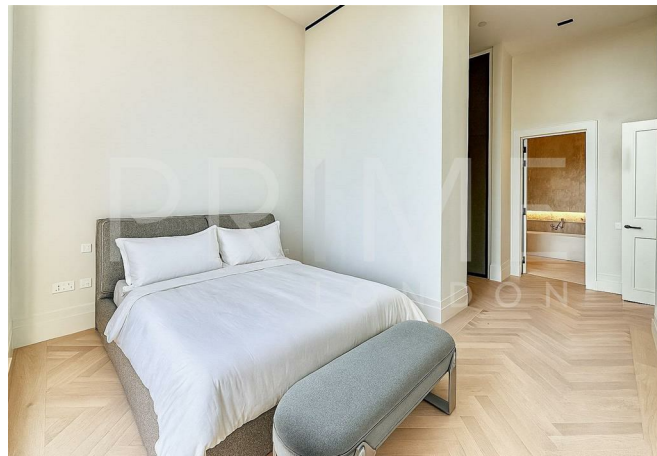
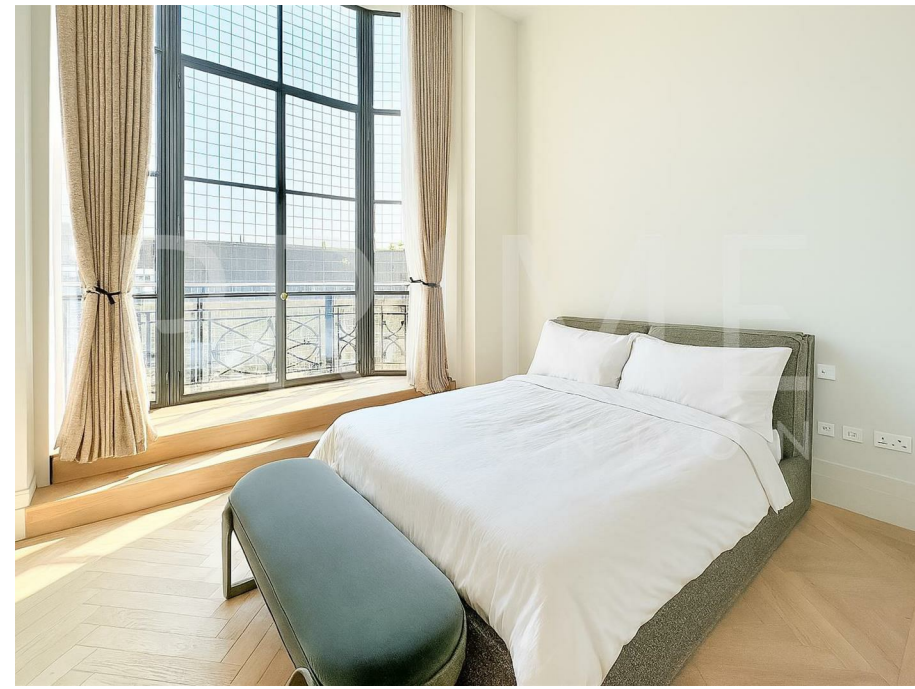
- Three bedroom apartment
- Exceptional 4.2m ceilings
- Residents' access to Six Senses Hotel facilities
- 3,128 sq ft (291 sqm)
- Short walk to Hyde Park
- 24 hour concierge

This beautiful 3,128 sq ft (291 sqm) three bedroom apartment, set within the iconic Whiteley development, is available for lease through Prime London.

Offering thoughtfully designed living space, the property features impressive ceiling heights and high-spec finishes throughout. The striking open-plan reception and dining space are bathed in natural light from a series of elegant arched windows, and seamlessly connected to a bespoke kitchen fitted with Gaggenau appliances.

The master bedroom offers generous proportions, complete with a walk-in dressing area and a luxurious marble en-suite bathroom featuring a bath. Two further generously sized bedrooms, each with their own en-suite bathrooms and bespoke fitted wardrobes, offer comfort and privacy for family or guests.

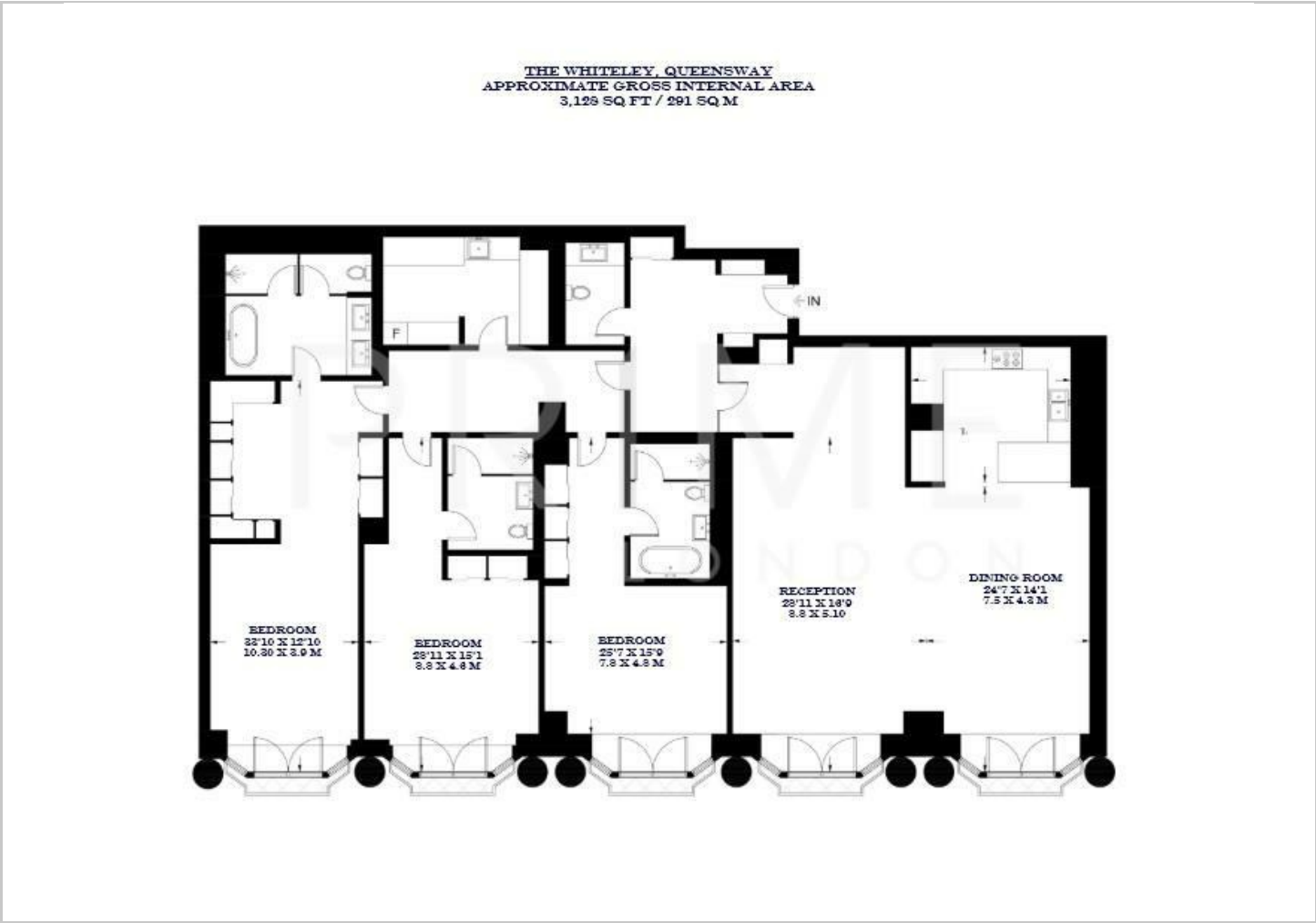
Residents benefit from access to the Six Senses Hotel and Spa, a range of boutique shops and restaurants, 24 hour concierge, and excellent transport connectivity, all within a landmark destination in the heart of Bayswater.







Floor Plans

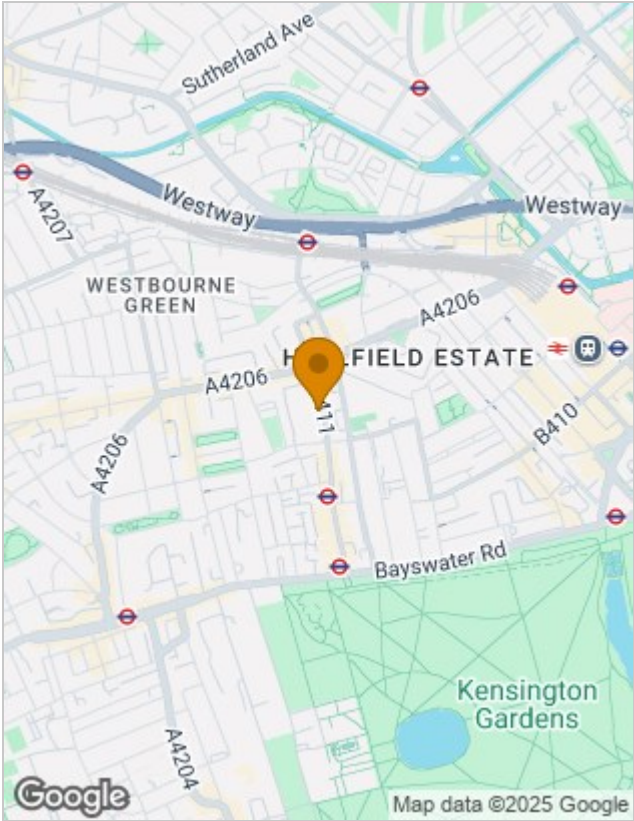


Viewing

By appointment. Contact us if you wish to arrange a viewing appointment for this property, or require further information.

The particulars are set out as a general outline only for the guidance of intended purchasers or lessees, and do not constitute, any part of a contract. Nothing in these particulars shall be deemed to be a statement that the property is in good structural condition or otherwise nor that any of the services, appliances, equipment or facilities are in good working order. Purchasers should satisfy themselves of this prior to purchasing.

Location Map



Energy Performance Graph

