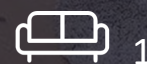


## One The Elephant

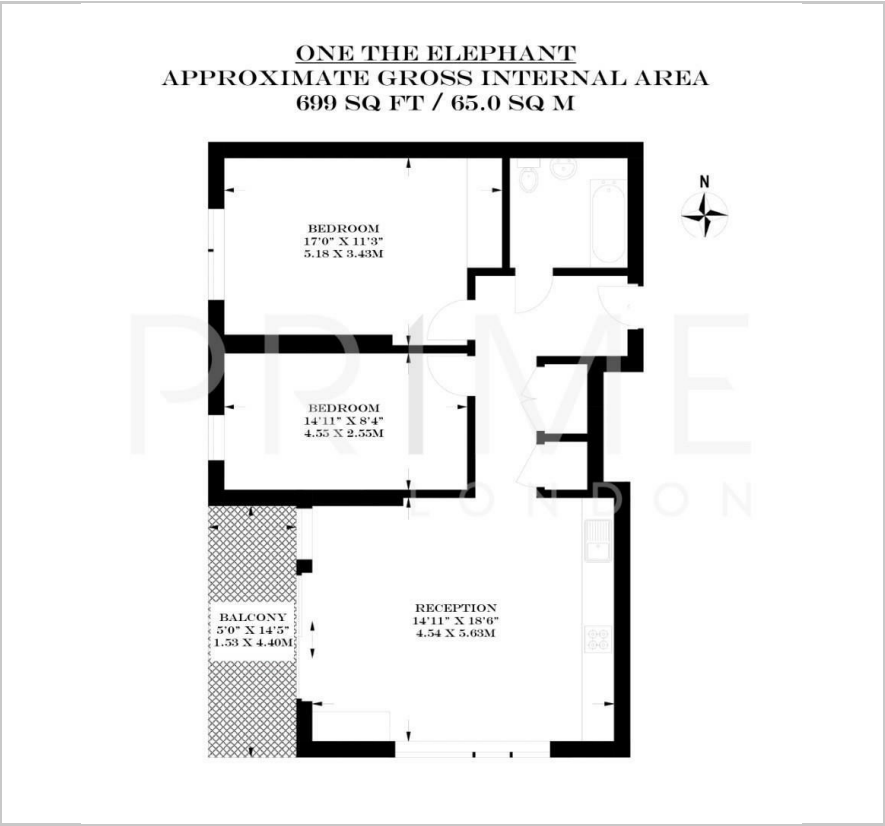
1 St. Gabriel Walk, Elephant and Castle, SE1 6FA

£762 Per Week

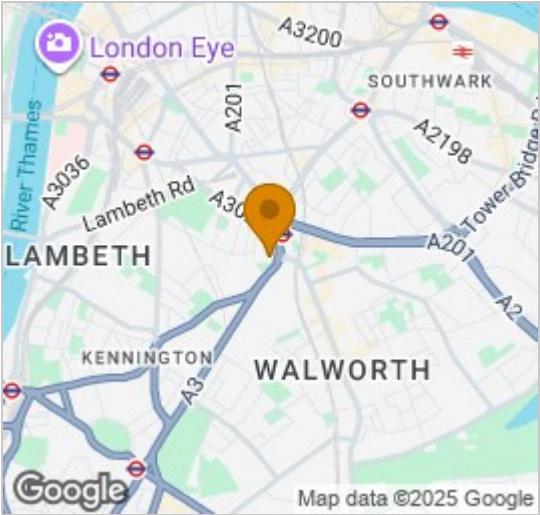




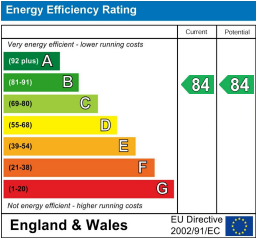
Floor Plan



Area Map



Energy Efficiency Graph



Viewing

By appointment. Contact us on 0207 928 6663 if you wish to arrange a viewing appointment for this property, or require further information.

- Two bedroom apartment
- Part furnished
- 24 hour concierge
- 699 sqft (65 sqm)
- Private Balcony
- Excellent transport links

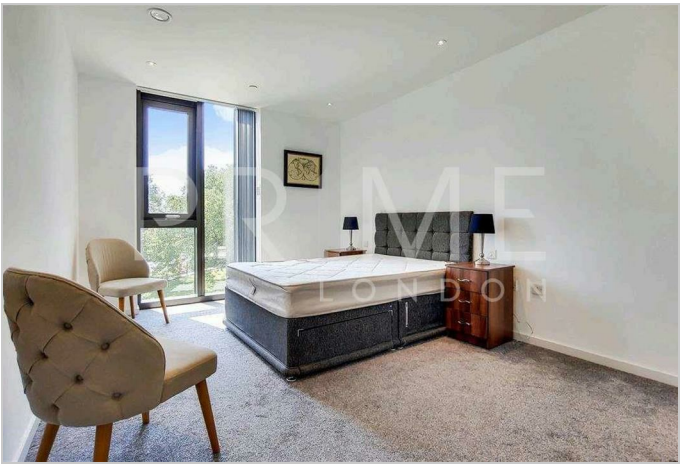


This modern, partly furnished two bedroom apartment is available for lease through Prime London.

Boasting approximately 699 sqft (65 sqm) of internal living space, the property offers both sophistication and comfort in one of London's most dynamic neighbourhoods. The apartment features a large open-plan reception and kitchen area.

The modern kitchen is fully integrated and provides ample space to dine. There are two spacious double bedrooms, each finished to a high standard and one with built in wardrobe space, following on to a sleek family bathroom.

One The Elephant has a 24 hour concierge service and is moments from the vibrant heart of Elephant & Castle, with an exceptional range of shops, bars, and restaurants just outside your door. The area also boasts excellent transport links, providing easy access to Central London and beyond.



These particulars, whilst believed to be accurate are set out as a general outline only for guidance and do not constitute any part of an offer or contract. Intending purchasers should not rely on them as statements of representation of fact, but must satisfy themselves by inspection or otherwise as to their accuracy. No person in this firms employment has the authority to make or give any representation or warranty in respect of the property.