



Montagu Court

27-29 Montagu Square, Marylebone, W1H 2LG

£1,500 Per Week



2



2

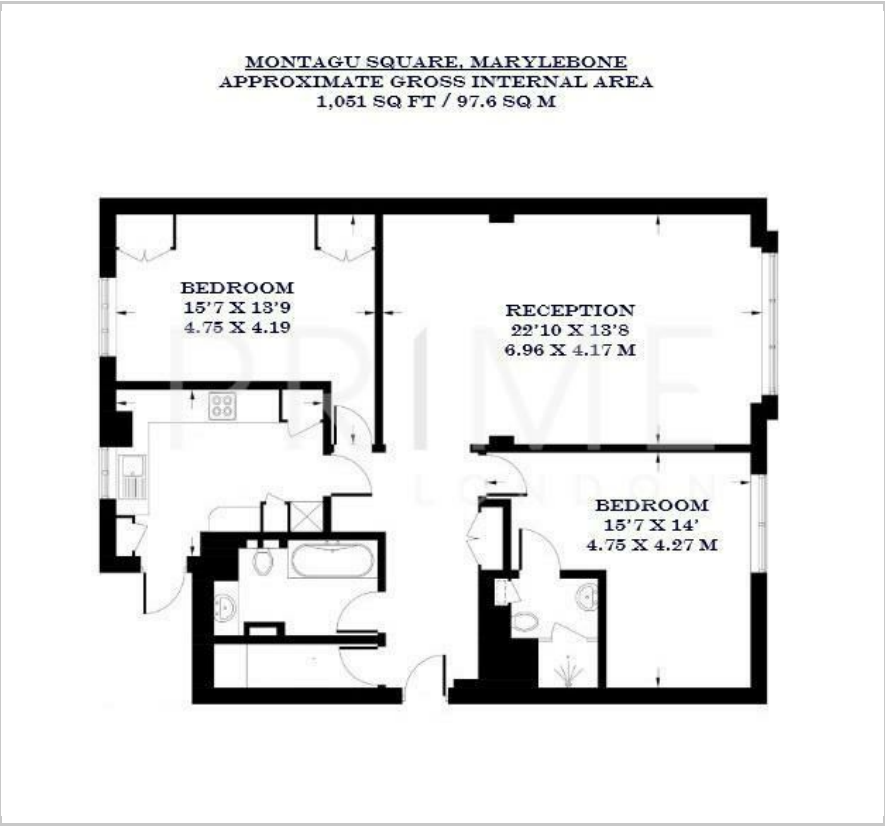


1



C

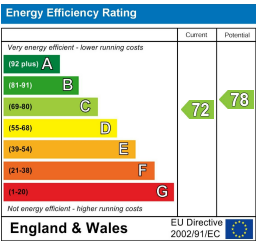
Floor Plan



Area Map



Energy Efficiency Graph



Viewing

By appointment. Contact us on 0207 052 1075 if you wish to arrange a viewing appointment for this property, or require further information.

- Beautifully refurbished
- 1,051 sq ft (97.6 sqm)
- Two bedrooms
- Prestigious neighbourhood



This two bedroom apartment, beautifully refurbished and situated in the prestigious Marylebone neighbourhood, is available for lease through Prime London.

This stylish home offers 1,051 sq ft (97.6 sqm) and features a bright and spacious reception room with large sash windows that fill the space with natural light. The separate contemporary kitchen is fully equipped with premium integrated appliances and generous storage.

The principal bedroom includes a sleek en suite shower room, while the second double bedroom provides fitted wardrobes, perfect for guests or use as a home office. A well designed utility room adds extra convenience and storage.

Perfectly positioned in the heart of Marylebone, Montagu Square offers residents a peaceful garden setting just moments from the boutiques, cafés, and restaurants of Marylebone High Street and Oxford Street.

Nearby transport connections at Baker Street and Marylebone stations ensure easy access across London.



These particulars, whilst believed to be accurate are set out as a general outline only for guidance and do not constitute any part of an offer or contract. Intending purchasers should not rely on them as statements of representation of fact, but must satisfy themselves by inspection or otherwise as to their accuracy. No person in this firms employment has the authority to make or give any representation or warranty in respect of the property.