

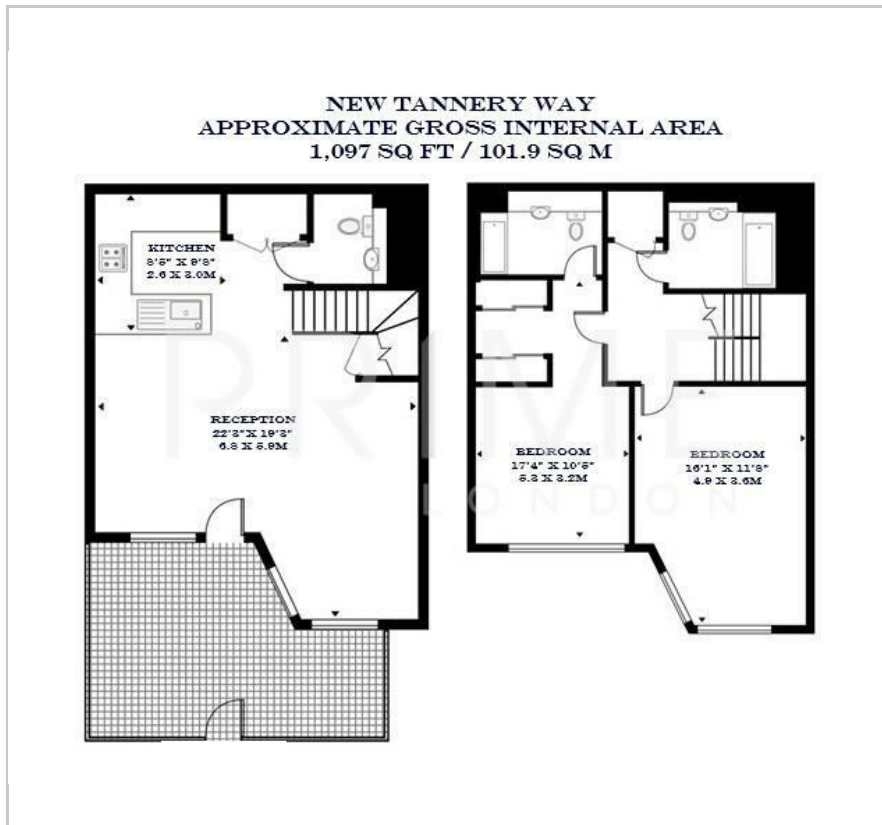
The Crosse

2 New Tannery Way, Bermondsey, SE1 5ZW

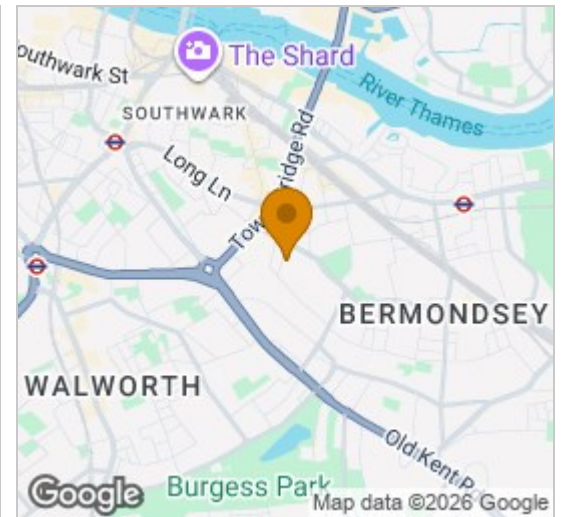
Asking Price £795,000



Floor Plan



Area Map



Energy Efficiency Graph



Viewing

By appointment. Contact us on 0207 928 6663 if you wish to arrange a viewing appointment for this property, or require further information.

- Two bedroom duplex ▪ 1,097 sq ft (101.9 sqm) apartment
- 12-hour concierge service ▪ Residents gym
- Excellent transport links ▪ Located in SE1

This stunning two bedroom duplex apartment, spanning 1,097 sq ft (101.9 sqm) in the sought-after Bermondsey Square development, is available for sale through Prime London.

Ideally located in the vibrant Bermondsey/London Bridge area and set across two floors, this beautifully presented home offers versatile living space. The ground floor features a bright and spacious open-plan reception room with wood flooring, a modern kitchen, and direct access to a private terrace. Upstairs, the principal bedroom benefits from a walk-in wardrobe and ensuite bathroom, while the second double bedroom is also generously sized with excellent storage. A further luxury bathroom completes the layout.

Residents of Bermondsey Square enjoy access to superb on-site amenities, including a 12 hour concierge service and a resident's gym (upon completion).

Perfectly positioned for city living, The Crosse is just a short walk from both Bermondsey and London Bridge stations, offering excellent transport links and an array of local restaurants, bars, and boutiques right on your doorstep.



These particulars, whilst believed to be accurate are set out as a general outline only for guidance and do not constitute any part of an offer or contract. Intending purchasers should not rely on them as statements of representation of fact, but must satisfy themselves by inspection or otherwise as to their accuracy. No person in this firm's employment has the authority to make or give any representation or warranty in respect of the property.