



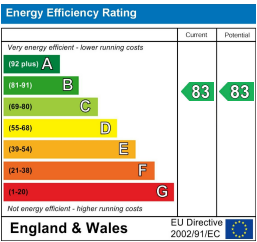
Floor Plan



Area Map



Energy Efficiency Graph



Viewing

By appointment. Contact us on 0207 052 1075 if you wish to arrange a viewing appointment for this property, or require further information.

- Elegant two bedroom ■ 930 sq ft (86.41 sqm) apartment
- Floor to ceiling windows ■ Private balcony
- Close proximity to St James Park, Victoria and Westminster Stations



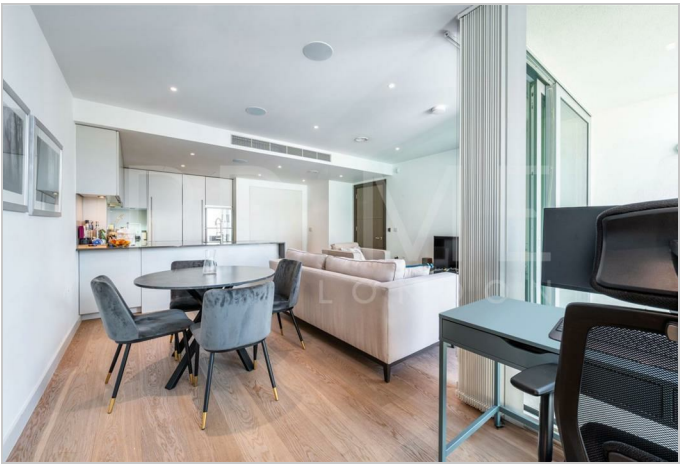
This elegant two bedroom apartment in Wellington House, nestled between St. James's Park and Victoria, is available for chain free sale through Prime London.

Totalling 930 sq ft (86.41 sqm), this property boasts a spacious reception room paired with a chic kitchen and a balcony, and two double bedrooms (one with an en suite bathroom) flooded with natural light throughout.

Residents of Wellington House also benefit from a dedicated 24 hour concierge.

This property lies amidst the vibrant Westminster district, within easy reach of Victoria, St. James, Mayfair, and Westminster's array of amenities, eateries, and shops.

Transportation options include St James's Park Station (0.2 miles), Victoria Station (0.3 miles), and Westminster Station (0.6 miles).



These particulars, whilst believed to be accurate are set out as a general outline only for guidance and do not constitute any part of an offer or contract. Intending purchasers should not rely on them as statements of representation of fact, but must satisfy themselves by inspection or otherwise as to their accuracy. No person in this firms employment has the authority to make or give any representation or warranty in respect of the property.