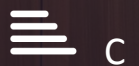


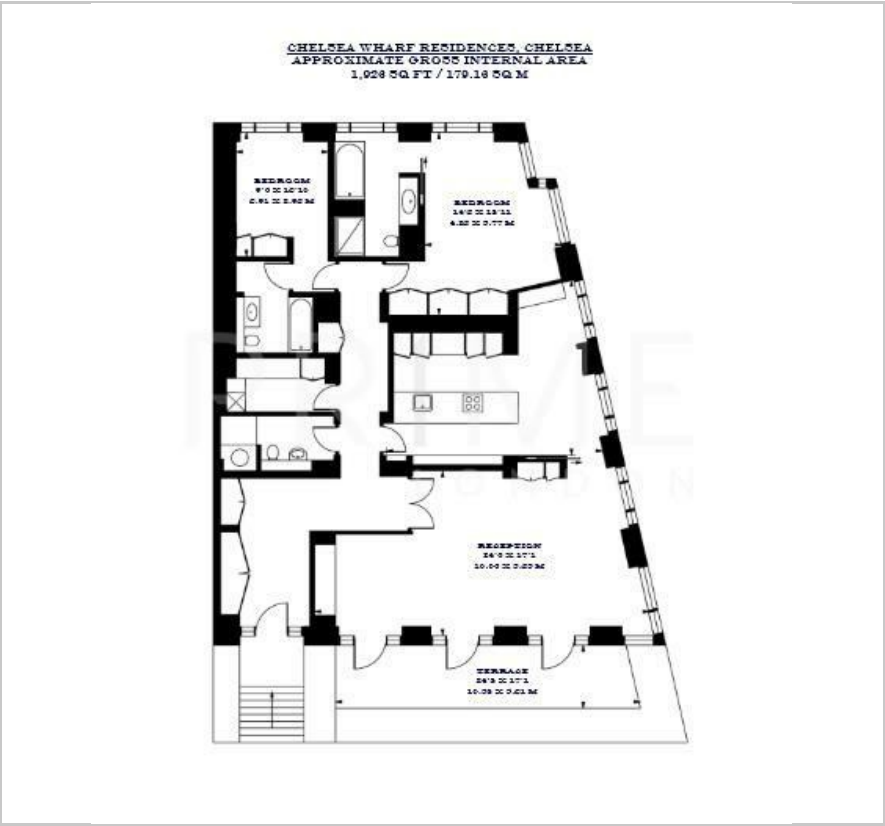
Chelsea Wharf Residences

15 Lots Road, Chelsea, SW10 0QJ

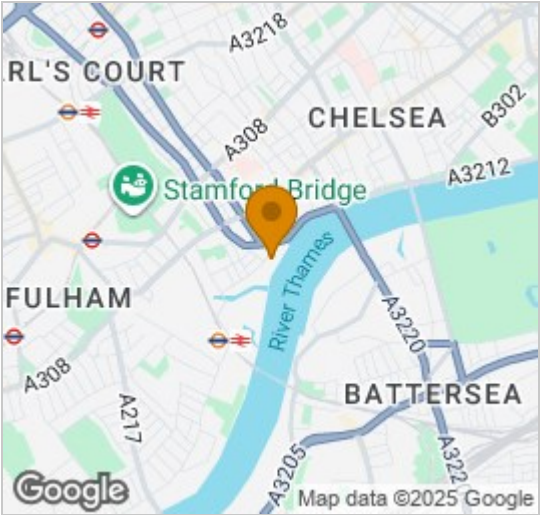
£1,900 Per Week



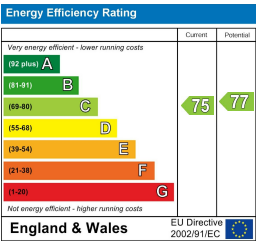
Floor Plan



Area Map



Energy Efficiency Graph



Viewing

By appointment. Contact us on 0207 052 1075 if you wish to arrange a viewing appointment for this property, or require further information.

- Two bedroom apartment
- 1,926 sq ft (179.16 sqm)
- Private terrace with river views
- Underground parking available
- Walking distance to King's Road
- Porter and lift service



This stunning two bedroom apartment, situated within the prestigious Chelsea Wharf Residences, is available for lease through Prime London.

Spanning 1,926 sq ft (179.16 sqm), the features a generously sized reception area filled with natural light, opening onto a private terrace offering spectacular views of the River Thames.

The apartment features a fully fitted semi open-plan kitchen, two spacious bedrooms with ample storage and a beautifully crafted en suite bathroom. Additional highlights are the property's high ceilings, elegant wood flooring, and abundant natural light throughout.

Residents benefit from a porter service and the option for secure parking at £250 pcm.

Located in the sought-after Lots Village area, this riverside development is located a short walk away from the world-class restaurants, quaint cafés, and iconic shopping on King's Road, Sloane Square, and Sloane Street. The neighborhood also hosts the renowned Chelsea Flower Show and vibrant farmers' markets at Duke of York Square.

Imperial Wharf station is located just 0.3 miles away.



These particulars, whilst believed to be accurate are set out as a general outline only for guidance and do not constitute any part of an offer or contract. Intending purchasers should not rely on them as statements of representation of fact, but must satisfy themselves by inspection or otherwise as to their accuracy. No person in this firm's employment has the authority to make or give any representation or warranty in respect of the property.