

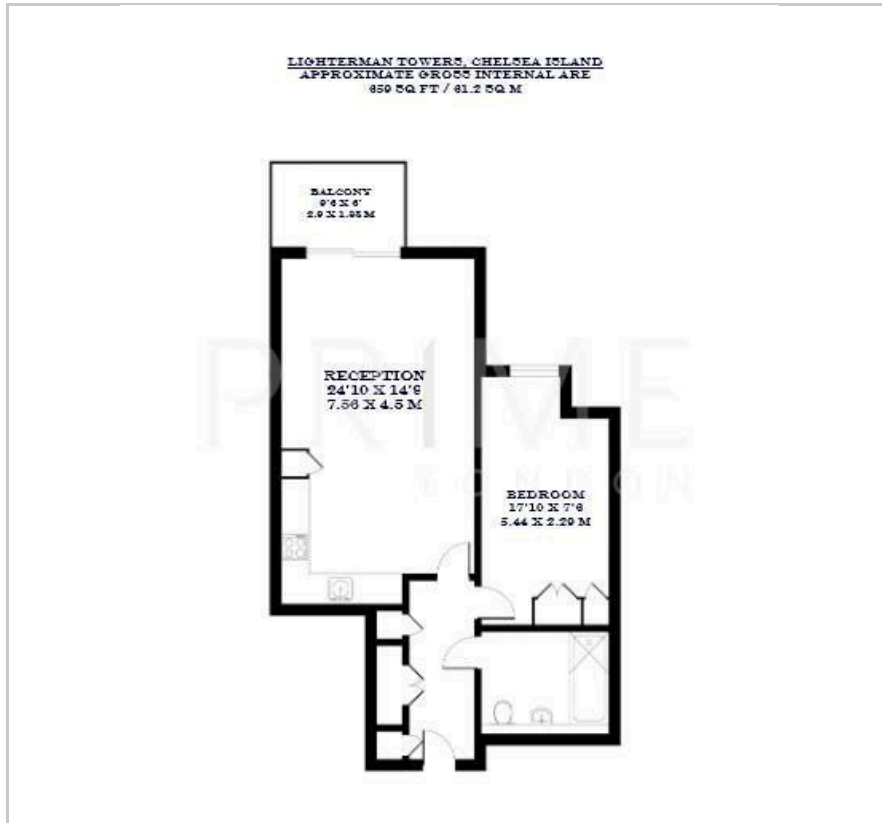
Lighterman Towers

1 Harbour Avenue, Chelsea Harbour, SW10 0HG

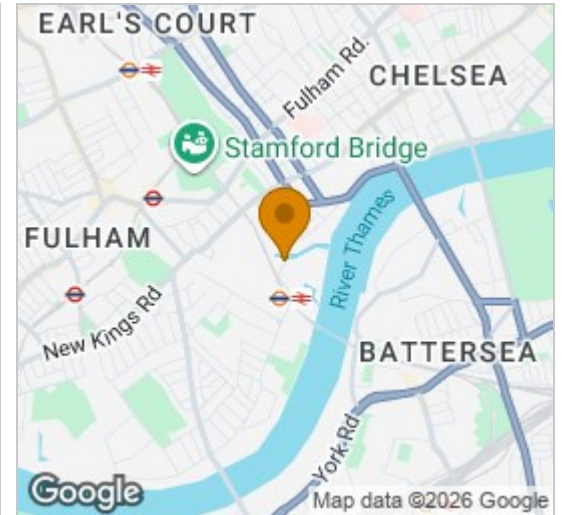
£630,000



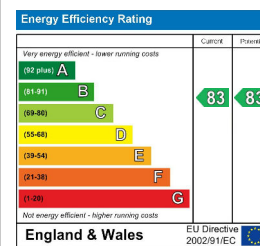
Floor Plan



Area Map



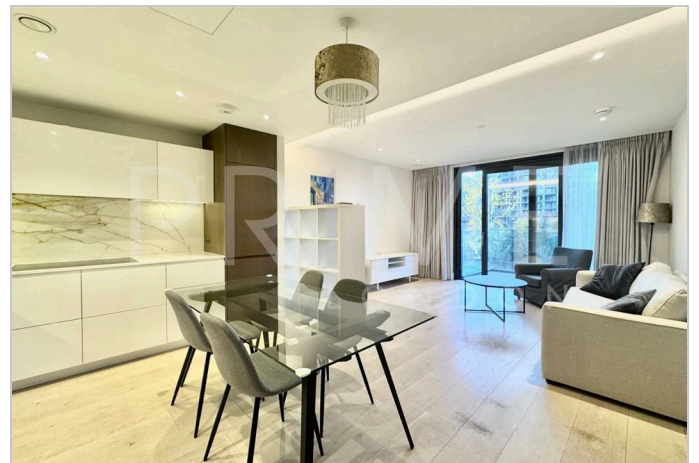
Energy Efficiency Graph



Viewing

By appointment. Contact us on 0207 052 1075 if you wish to arrange a viewing appointment for this property, or require further information.

- One bedroom apartment
- Private balcony facing communal gardens
- Residents' gym
- 659 sq ft (61.2 sqm)
- Short walk away from King's Road
- 24 hour concierge



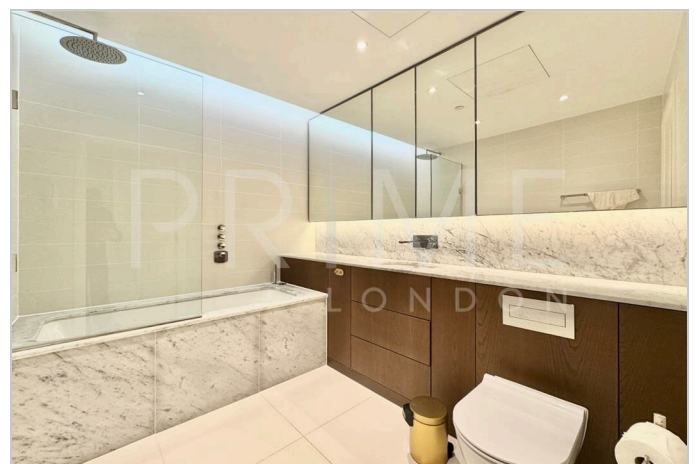
This superb one bedroom property, located in the prestigious Lighterman Towers development, is available for sale through Prime London.

Offering contemporary riverside living, this 659 sq ft (61.2 sqm) property features a bright and spacious open plan reception and dining area leading onto a private balcony, alongside a modern fully fitted kitchen with integrated appliances. The well proportioned double bedroom is complemented by a stylish bathroom and sophisticated interiors throughout. Additional benefits include comfort cooling, lift access, and excellent storage.

Residents of Chelsea Island enjoy a 24 hour concierge service, residents' gym, and landscaped communal gardens, all within a secure and elegant riverside setting.

Ideally located moments from the River Thames and Chelsea Harbour, the development is the within easy reach of Imperial Wharf station for Overground and National Rail services, as well as excellent local amenities and restaurants.

The King's Road and Sloane Square are also close by, offering a vibrant mix of boutiques, cafés, and cultural attractions.



These particulars, whilst believed to be accurate are set out as a general outline only for guidance and do not constitute any part of an offer or contract. Intending purchasers should not rely on them as statements of representation of fact, but must satisfy themselves by inspection or otherwise as to their accuracy. No person in this firm's employment has the authority to make or give any representation or warranty in respect of the property.