



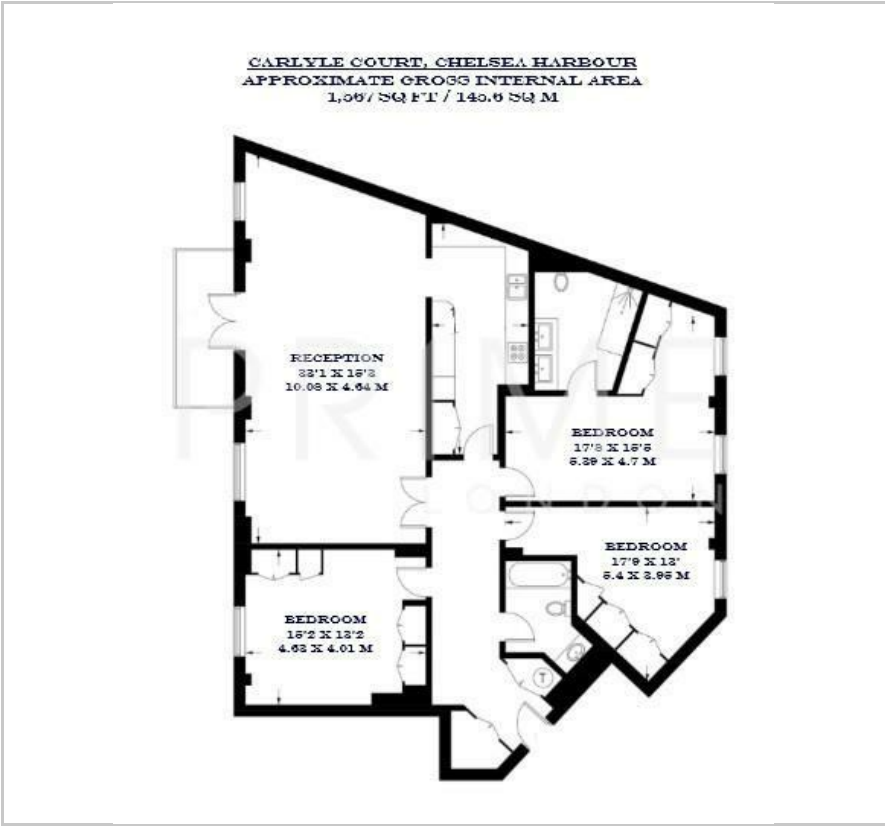
Carlyle Court

Chelsea Harbour, SW10 0UQ

£1,300 Per Week



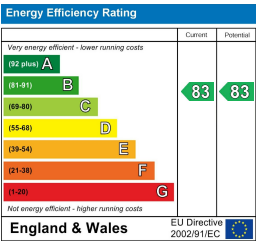
Floor Plan



Area Map



Energy Efficiency Graph



Viewing

By appointment. Contact us on 0207 052 1075 if you wish to arrange a viewing appointment for this property, or require further information.

- Three bedroom apartment
- 1,567 sq ft (145.6 sqm)
- Private balcony with views of the marina
- Fully furnished to a high standard
- Located a short walk from King's Road
- 24 hour porter

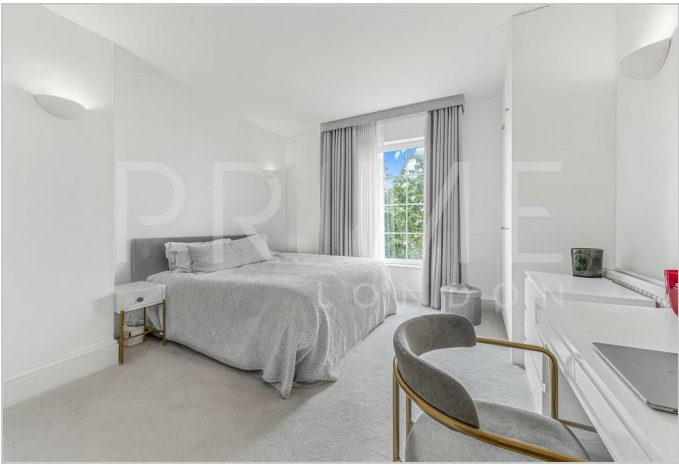


This bright and spacious three bedroom apartment, set within Carlyle Court at Chelsea Harbour, is available for lease through Prime London.

Offering 1,567 sq ft (145.6 sqm) of living space, the property features a large reception room and semi open plan kitchen opening onto a private balcony, with views of the marina. The apartment further comprises a principal bedroom suite with a private en suite bathroom, two additional well proportioned bedrooms, and a second family bathroom.

Additional benefits include secure underground parking, 24 hour portorage, and access to the beautifully maintained communal grounds.

Perfectly positioned within Chelsea Harbour, the residence is a stone's throw from Imperial Wharf station and within walking distance of the boutiques, restaurants, and galleries of King's Road.



These particulars, whilst believed to be accurate are set out as a general outline only for guidance and do not constitute any part of an offer or contract. Intending purchasers should not rely on them as statements of representation of fact, but must satisfy themselves by inspection or otherwise as to their accuracy. No person in this firms employment has the authority to make or give any representation or warranty in respect of the property.