



## The Atlas Building

145 City Road, Shoreditch, EC1V 1AA

£475,000



0



1



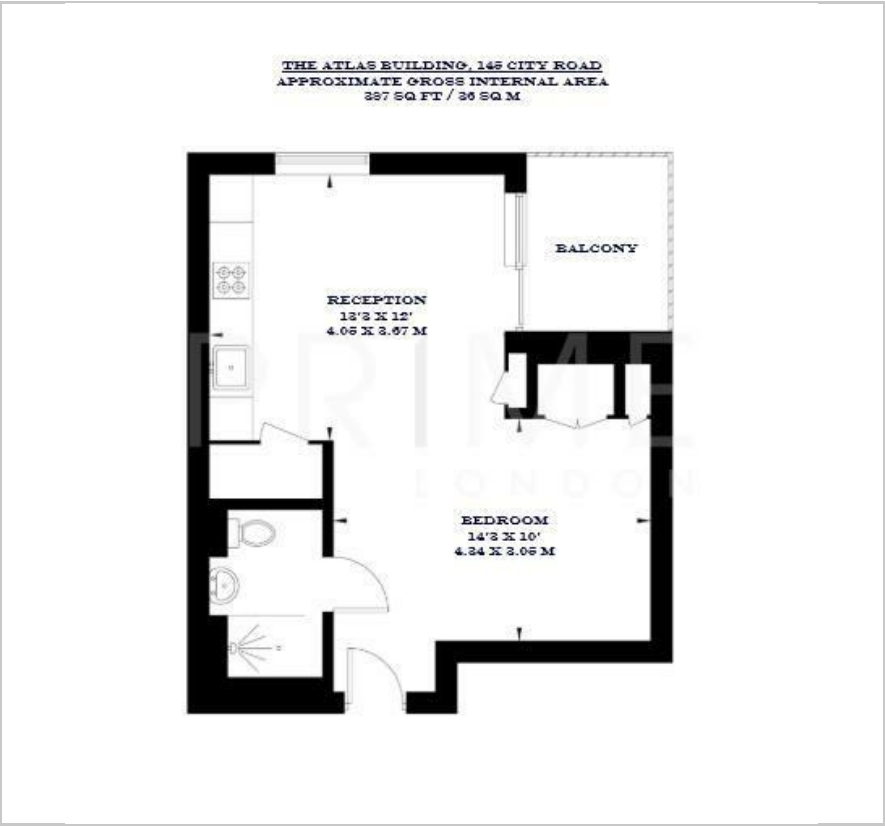
1



B



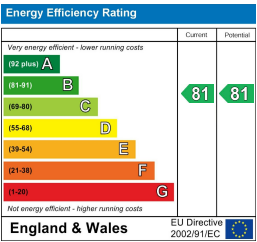
Floor Plan



Area Map



Energy Efficiency Graph



Viewing

By appointment. Contact us on 0207 052 1075 if you wish to arrange a viewing appointment for this property, or require further information.

- Studio apartment
- Private balcony
- Conveniently located between Old Street and Shoreditch
- 387 sq ft (36 sqm)
- Residents' pool, gym and communal rooftop garden
- 24 hour concierge



This beautifully presented studio apartment, set within the popular Atlas Building on City Road, is available for sale through Prime London.

The property spans across 387 sq ft (36 sqm) and offers a generous open plan reception area with floor to ceiling windows that maximise natural light. The property also features a contemporary fitted kitchen with sleek cabinetry and integrated appliances.

The apartment further comprises a well appointed bathroom finished to a high specification with modern fixtures and fittings.

Residents benefit from an array of exclusive amenities, including a 24 hour concierge service, a private residents' gym, and a landscaped rooftop garden showcasing panoramic views of the London skyline.

Perfectly positioned between Old Street and Angel, the apartment provides convenient access to the City, Shoreditch, and the West End, as well as excellent transport connections across London.



These particulars, whilst believed to be accurate are set out as a general outline only for guidance and do not constitute any part of an offer or contract. Intending purchasers should not rely on them as statements of representation of fact, but must satisfy themselves by inspection or otherwise as to their accuracy. No person in this firms employment has the authority to make or give any representation or warranty in respect of the property.