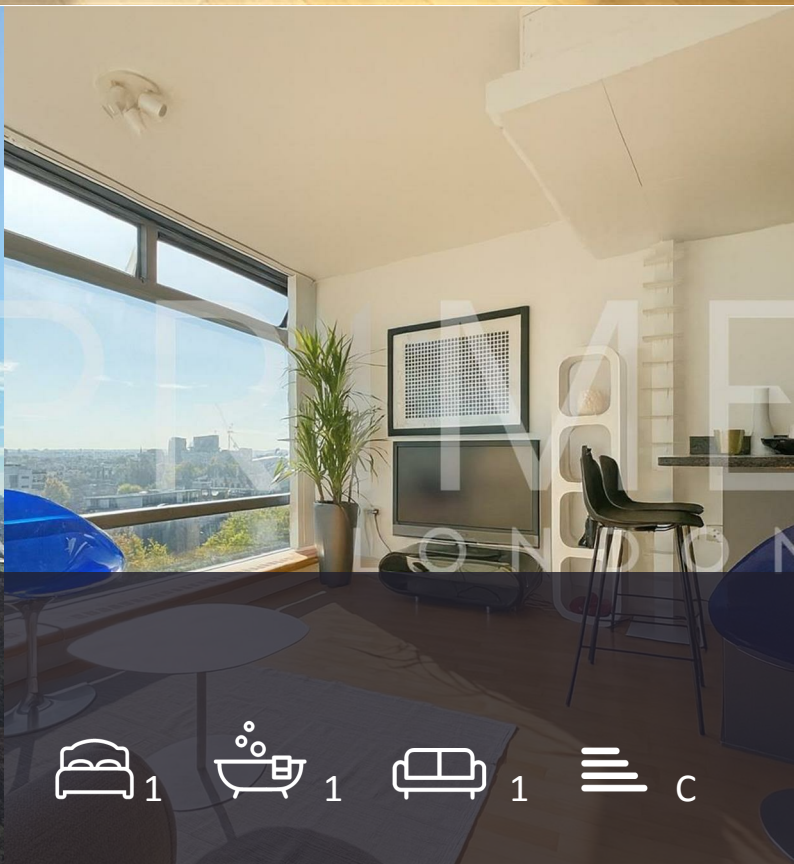




## Parliament View Apartments

1 Albert Embankment, SE1 7XL

£576 Per Week



1



1



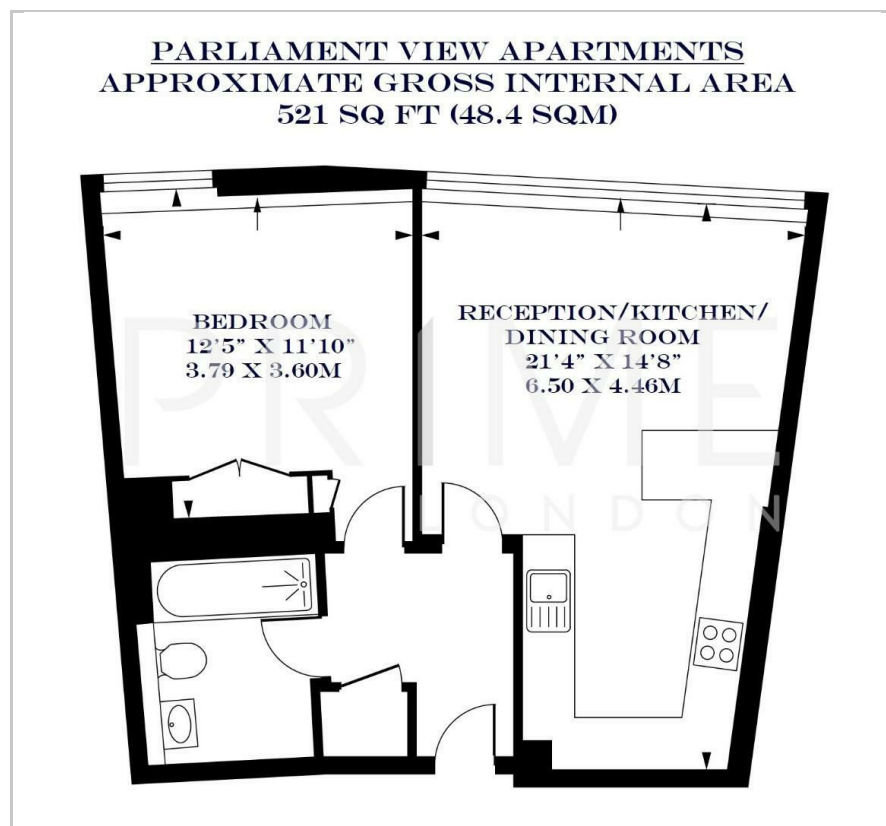
1



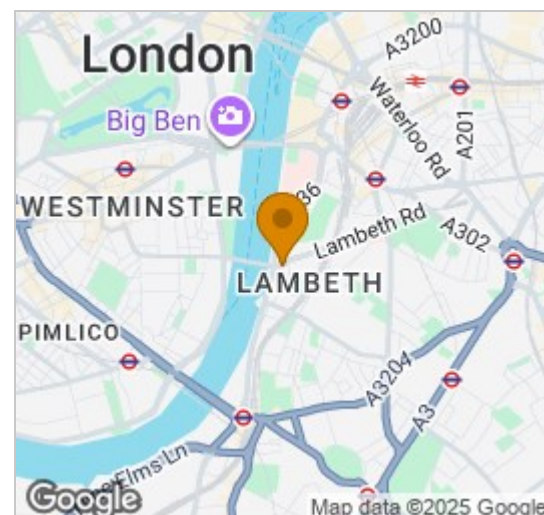
C



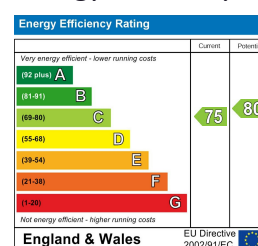
## Floor Plan



## Area Map



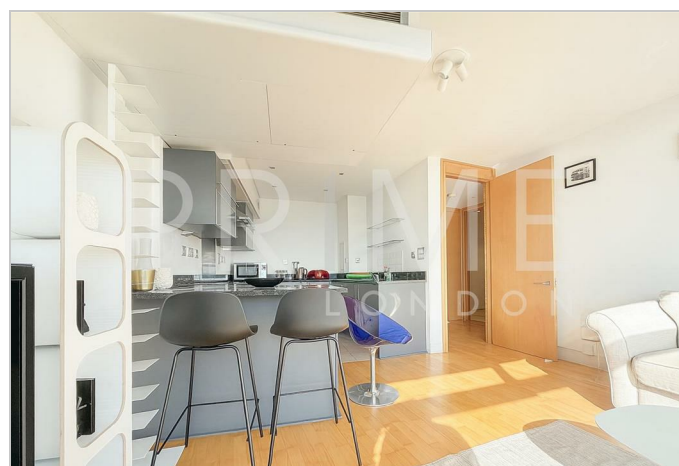
## Energy Efficiency Graph



## Viewing

By appointment. Contact us on 0207 928 6663 if you wish to arrange a viewing appointment for this property, or require further information.

- Modern one bedroom
- Residents' gymnasium apartment
- Air cooling
- Wooden flooring
- Located next to The River Thames
- 24 hour concierge service

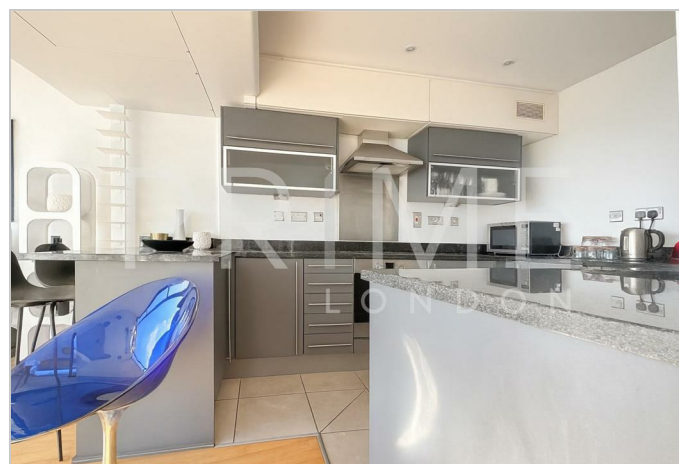


This immaculate high floor one bedroom apartment, set in the centrally located Parliament View Apartments development next to the River Thames and Houses of Parliament, is available for lease through Prime London.

The apartment comprises a well kept reception with a private outlook and wooden flooring, an open plan fully fitted kitchen with breakfast bar, a spacious bedroom with built in storage, and a separate modern family bathroom. The property also benefits from air cooling.

Parliament View itself offers a 24 hour concierge service, residents' gymnasium and an excellent location on the river between Lambeth and Vauxhall Bridge.

As a result the development is within easy reach of the West End, Westminster, the City and South Bank. Vauxhall rail and underground station.



These particulars, whilst believed to be accurate are set out as a general outline only for guidance and do not constitute any part of an offer or contract. Intending purchasers should not rely on them as statements of representation of fact, but must satisfy themselves by inspection or otherwise as to their accuracy. No person in this firm's employment has the authority to make or give any representation or warranty in respect of the property.

Palace View, 131 Lambeth Road, London SE1 7BT | 21 Grosvenor Gardens, Belgravia, London SW1W 0BP

Tel: 0207 928 6663 | 0207 052 1075 Email: [Office@PrimeLondonResidential.com](mailto:Office@PrimeLondonResidential.com) [www.PrimeLondonResidential.com](http://www.PrimeLondonResidential.com)