

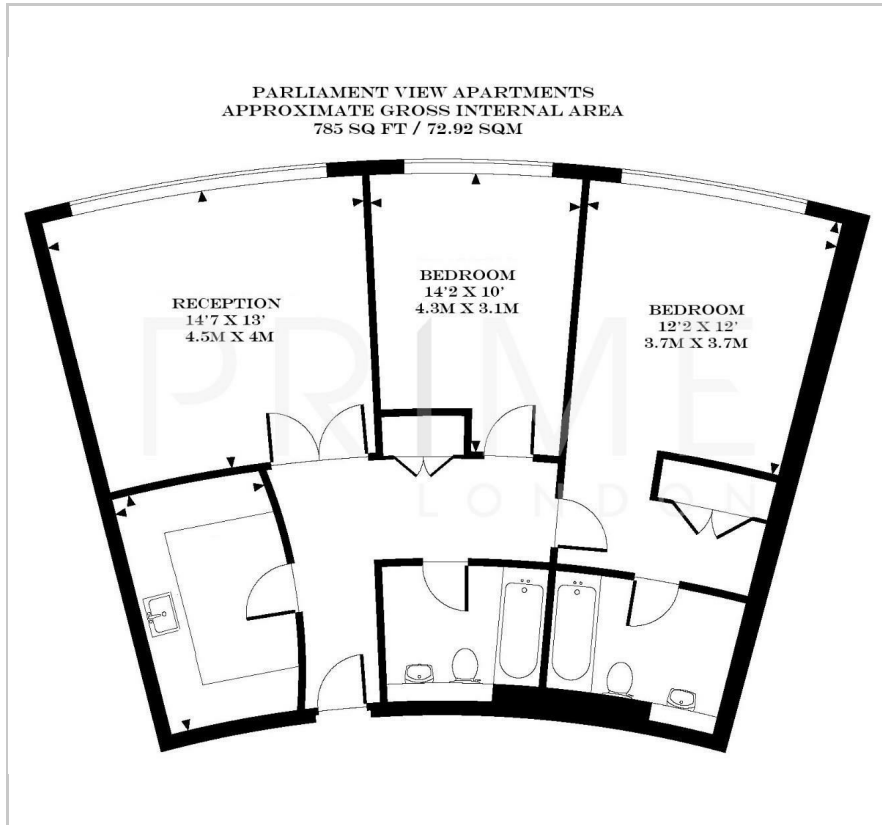
Parliament View Apartments

1 Albert Embankment, SE1 7XQ

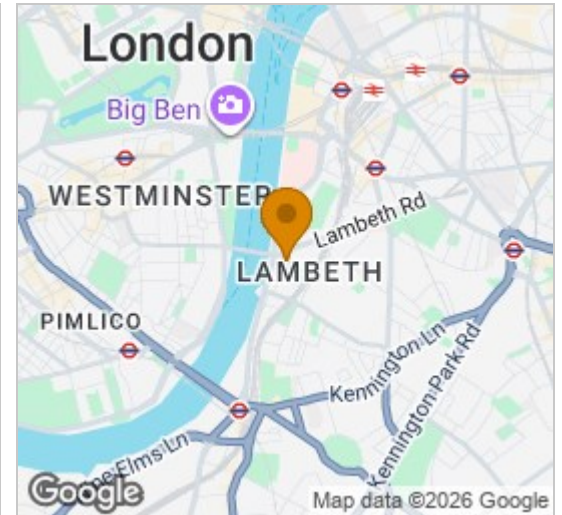
£830 Per Week



Floor Plan



Area Map



Energy Efficiency Graph



Viewing

By appointment. Contact us on 0207 928 6663 if you wish to arrange a viewing appointment for this property, or require further information.

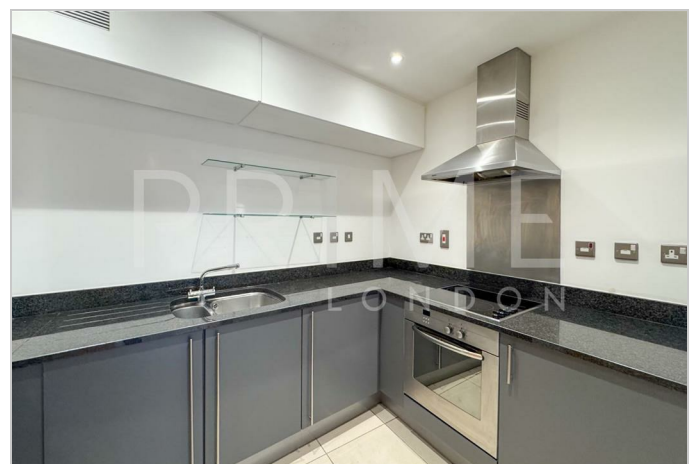
- Iconic views
- Fully furnished
- Air cooling
- Secure parking space
- Residents' gymnasium
- 24 hour concierge service

This two bedroom apartment, with the most iconic views of the River Thames, Houses of Parliament and Big Ben, totalling 785 sq ft (72 sq m) and with secure parking, is available for lease through Prime London.

The apartment comprises a bright reception, separate kitchen, main bedroom with dressing area and en suite, a further spacious double bedroom, separate modern bathroom, wooden flooring and air cooling.

Parliament View itself offers a 24 hour concierge service, residents' gymnasium and an excellent location on the river between Lambeth and Vauxhall Bridge.

As a result the development is within easy reach of the West End, Westminster, the City and South Bank, Vauxhall rail and underground station.



These particulars, whilst believed to be accurate are set out as a general outline only for guidance and do not constitute any part of an offer or contract. Intending purchasers should not rely on them as statements of representation of fact, but must satisfy themselves by inspection or otherwise as to their accuracy. No person in this firm's employment has the authority to make or give any representation or warranty in respect of the property.