



## Charrington Tower

11 Biscayne Avenue, Canary Wharf, E14 9BF

£923 Per Week



3



2



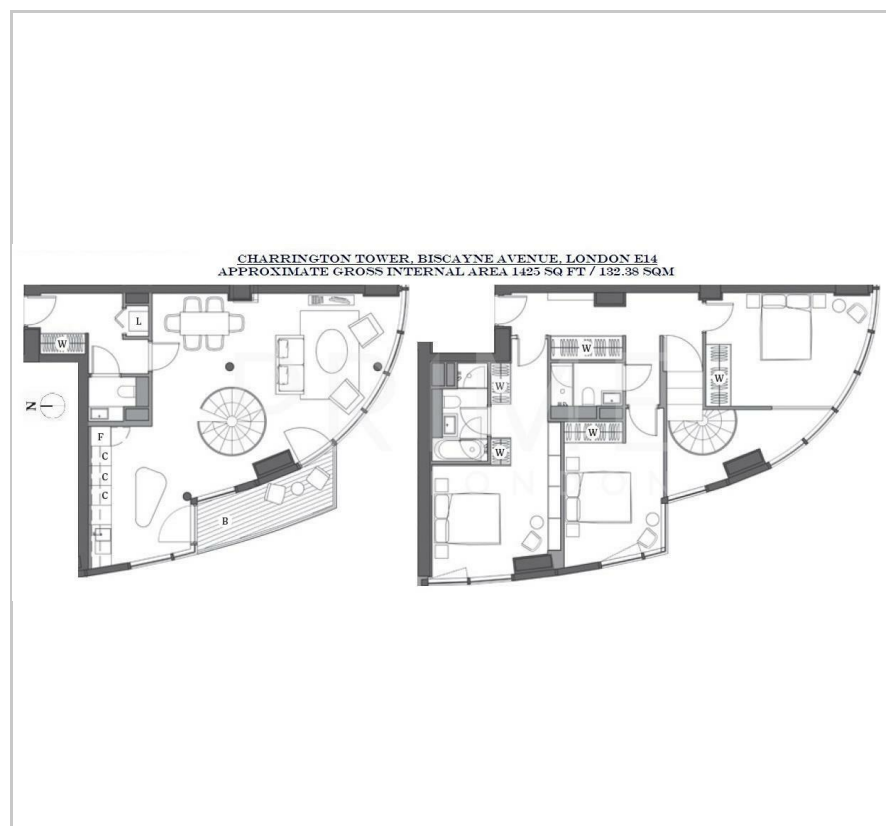
1



B



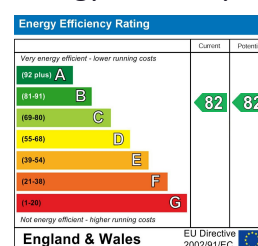
## Floor Plan



## Area Map



## Energy Efficiency Graph



## Viewing

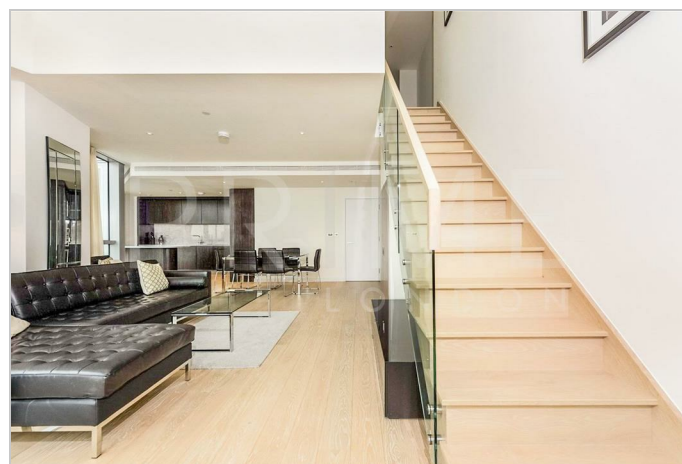
By appointment. Contact us on 0207 928 6663 if you wish to arrange a viewing appointment for this property, or require further information.

- Over 1,400 sq ft
- Extraordinary panoramic views south and east
- Outstanding interior finishes
- Exclusive use of a Sky Lounge and Sky Terrace
- Fitness centre, swimming pool and Hydrocentre
- Sauna and steam room

This duplex apartment of over 1,400 sq ft, with extraordinary panoramic views south and east, is available for lease exclusively through Prime London.

Charrington Tower is the final building on the successful New Providence Wharf estate, and the development itself features a fitness centre, swimming pool and hydrocentre, with sauna and steam room.

Residents also enjoy exclusive use of a Sky Lounge and Sky Terrace atop the tower, which serves as a place for quiet relaxation as well as a hospitality suite for private parties.



These particulars, whilst believed to be accurate are set out as a general outline only for guidance and do not constitute any part of an offer or contract. Intending purchasers should not rely on them as statements of representation of fact, but must satisfy themselves by inspection or otherwise as to their accuracy. No person in this firm's employment has the authority to make or give any representation or warranty in respect of the property.

Palace View, 131 Lambeth Road, London SE1 7BT | 21 Grosvenor Gardens, Belgravia, London SW1W 0BP

Tel: 0207 928 6663 | 0207 052 1075 Email: [Office@PrimeLondonResidential.com](mailto:Office@PrimeLondonResidential.com) [www.PrimeLondonResidential.com](http://www.PrimeLondonResidential.com)