



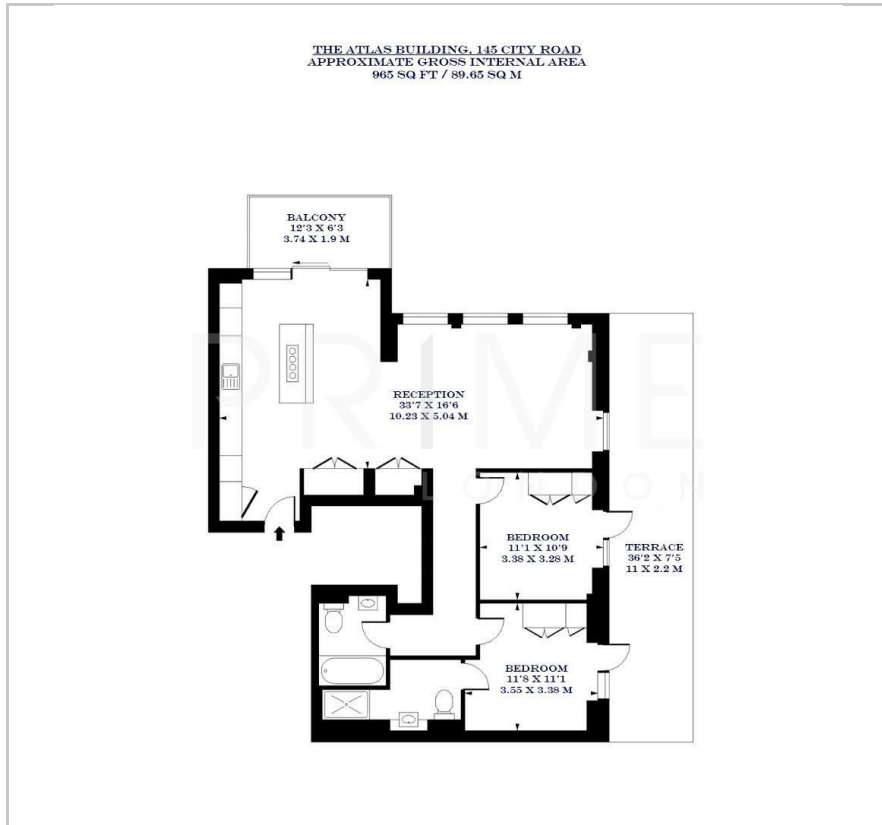
The Atlas Building

145 City Road, EC1V 1AZ

£1,065 Per Week



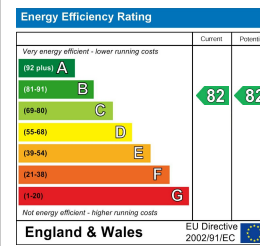
Floor Plan



Area Map



Energy Efficiency Graph



Viewing

By appointment. Contact us on 0207 052 1075 if you wish to arrange a viewing appointment for this property, or require further information.

- Two bedroom apartment
- 965 sq ft (89.65 sq m)
- Generous terrace with skyline views
- Perfectly positioned between Liverpool Street and Old Street
- Residents' gym, spa, pool and cinema room
- 24 hour concierge



This exceptional high floor two bedroom apartment, located in The Atlas Building, is available for lease through Prime London.

Offering 965 sq ft (89.65 sqm) of well designed living space, the property features a generous open plan reception room, complete with floor to ceiling windows and direct access to a private balcony. The sleek kitchen is designed with integrated appliances and features a central island.

The principal bedroom is well proportioned and benefits from built in wardrobes, while the second double bedroom offers flexible use. Both bedrooms have access to a private terrace, creating a seamless blend of indoor and outdoor living.

The Atlas Building is a landmark development in the heart of City Road, positioned moments from Old Street, Shoreditch, and Clerkenwell.

Residents of The Atlas Building enjoy world-class amenities including a swimming pool, spa, gymnasium, private cinema, residents' business lounge, and a 24-hour concierge service.

For transport, Old Street Station just a short walk away, while nearby Angel and Liverpool Street stations provide swift access across London. The area is renowned for its vibrant mix of dining and shopping.



These particulars, whilst believed to be accurate are set out as a general outline only for guidance and do not constitute any part of an offer or contract. Intending purchasers should not rely on them as statements of representation of fact, but must satisfy themselves by inspection or otherwise as to their accuracy. No person in this firm's employment has the authority to make or give any representation or warranty in respect of the property.