

## Belgrave Mews South

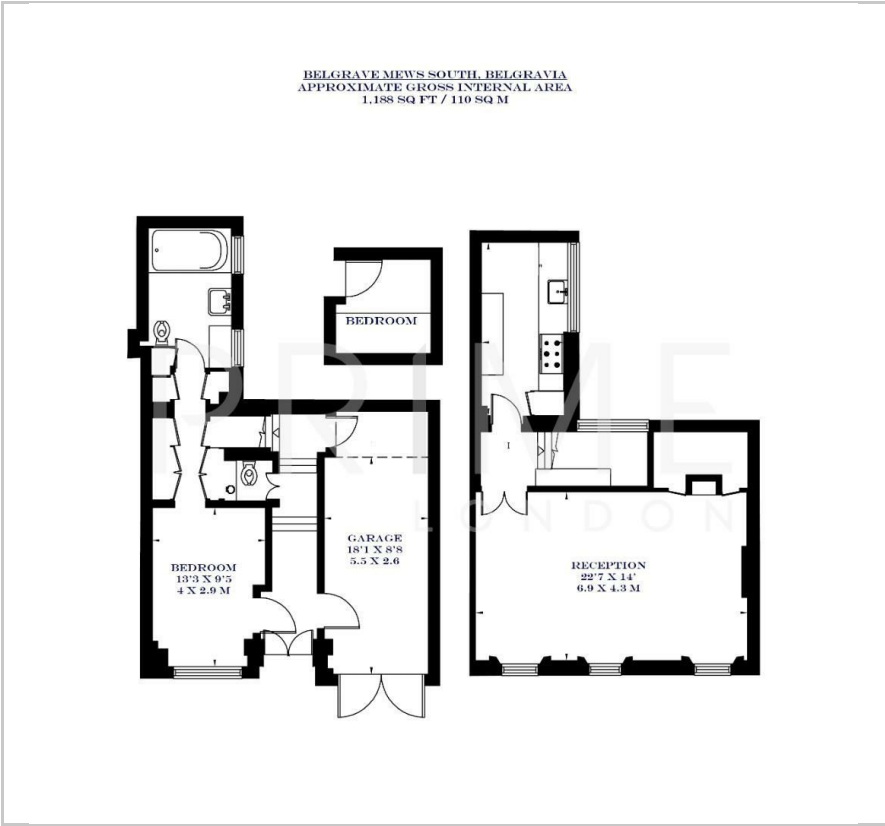
Belgravia, SW1X 8BT

£2,076 Per Week





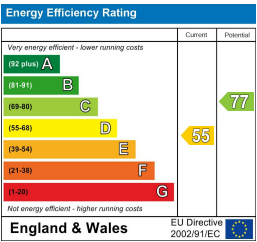
Floor Plan



Area Map



Energy Efficiency Graph



Viewing

By appointment. Contact us on 0207 052 1075 if you wish to arrange a viewing appointment for this property, or require further information.

- Two bedroom mews house
- Stylish interiors throughout
- Just 0.3 miles Hyde Park
- 1,188 sq ft (110 sqm)
- Private garage
- Located moments away from Corner Station
- Elizabeth Street



This stylishly presented mews house, located in one of Belgravia's most sought-after mews, is available for lease through Prime London.

The home is filled with natural light and offers well-proportioned living space, totalling 1,188 sq ft (110 sqm). The reception room features high vaulted ceilings, solid wood flooring, and original shutters, creating a sense of both elegance and comfort. The kitchen is well-equipped with integrated appliances and space for casual dining. A cloakroom is neatly tucked away on the half-landing.

The principal bedroom is generously sized with built-in storage, an en-suite bathroom with separate bath and shower, and access to a private balcony. A second bedroom completes the upper floor.

This location offers the best of Belgravia living, with boutique shops, cafés, and fine dining on Elizabeth Street just a short stroll away. Sloane Square and Victoria stations are within easy reach, offering excellent transport links across London, including the District, Circle, and Victoria lines.

These particulars, whilst believed to be accurate are set out as a general outline only for guidance and do not constitute any part of an offer or contract. Intending purchasers should not rely on them as statements of representation of fact, but must satisfy themselves by inspection or otherwise as to their accuracy. No person in this firm's employment has the authority to make or give any representation or warranty in respect of the property.