

The Corniche

24 Albert Embankment, SE1 7GJ

£646 Per Week



1



1

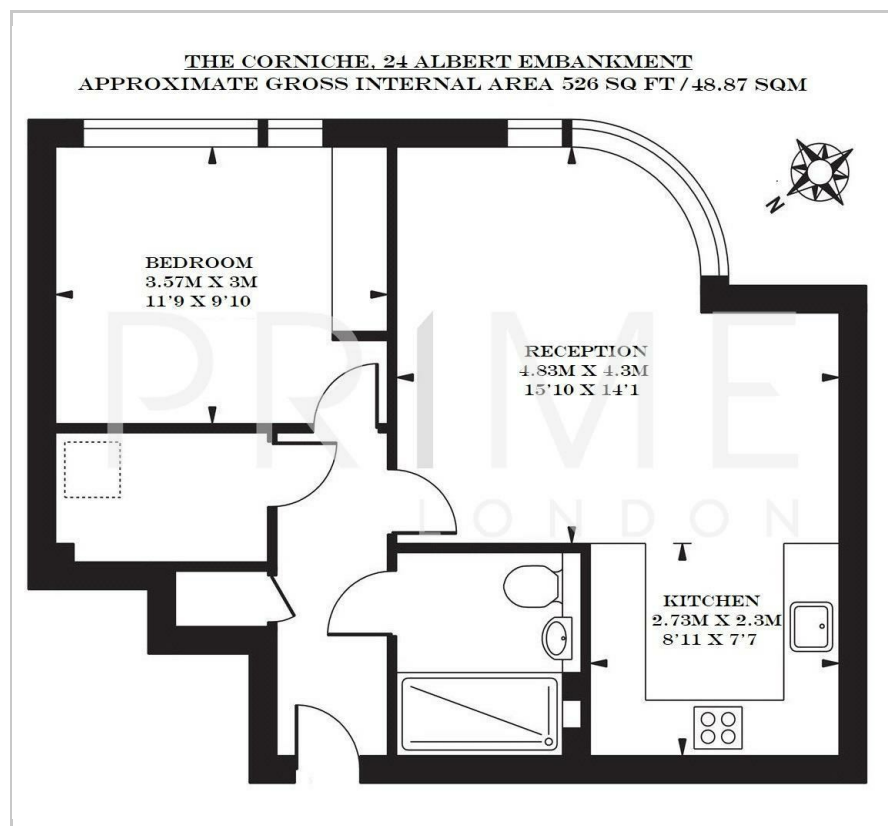


1

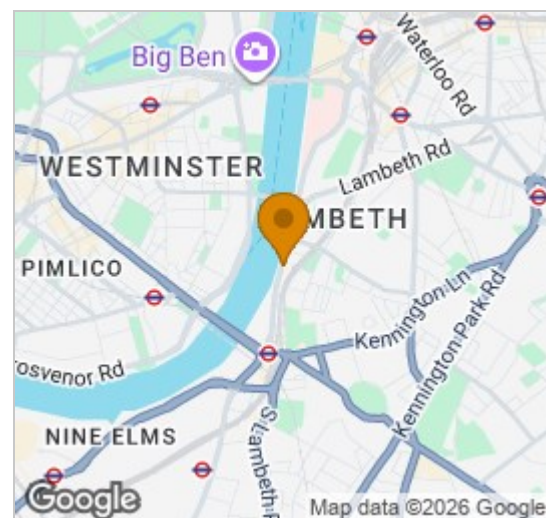


B

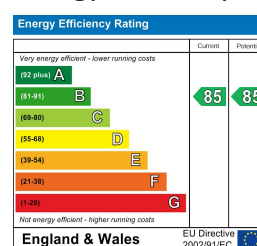
Floor Plan



Area Map



Energy Efficiency Graph



Viewing

By appointment. Contact us on 0207 928 6663 if you wish to arrange a viewing appointment for this property, or require further information.

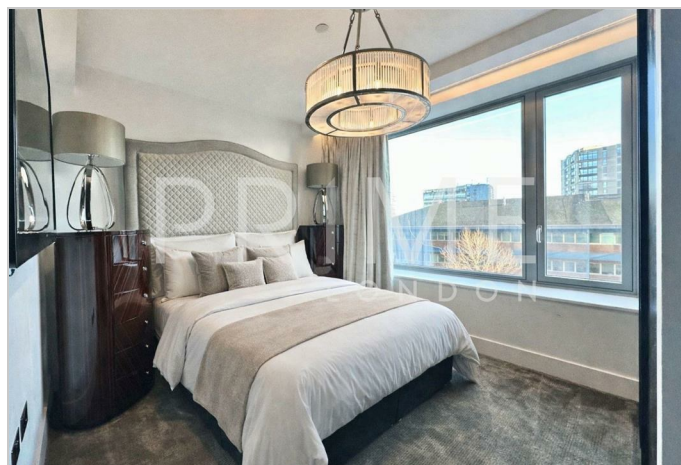
- Stylish one bedroom ▪ 526 sq ft (48.87 sqm) apartment
- Furnished to a high standard ▪ Wooden flooring
- Residents gym, pool, spa, and ▪ 24 hour concierge sky lounge

A bright south facing 526 sq ft (48.87 sqm) one bedroom apartment, available for lease exclusively through Prime London in The Corniche, 24 Albert Embankment.

The property is excellently finished with high end furniture throughout and comprises an open plan dining and reception room, fully fitted interior designed kitchen with Miele appliances, luxury bathroom and a utility cupboard with good storage.

The development includes extensive residents facilities including a restaurant, gym, spa, pool and cinema, and also commercial spaces such as restaurants and cafes focused around a well considered and inviting public space.

Located in an enviable position on the bank of the River Thames, The Corniche (designed by Foster & Partners) captures some of London's most exquisite views, not only of the Houses of Parliament and the River Thames, but also the Tate Britain, London Eye and the City.



These particulars, whilst believed to be accurate are set out as a general outline only for guidance and do not constitute any part of an offer or contract. Intending purchasers should not rely on them as statements of representation of fact, but must satisfy themselves by inspection or otherwise as to their accuracy. No person in this firm's employment has the authority to make or give any representation or warranty in respect of the property.

Palace View, 131 Lambeth Road, London SE1 7BT | 21 Grosvenor Gardens, Belgravia, London SW1W 0BP

Tel: 0207 928 6663 | 0207 052 1075 Email: Office@PrimeLondonResidential.com www.PrimeLondonResidential.com