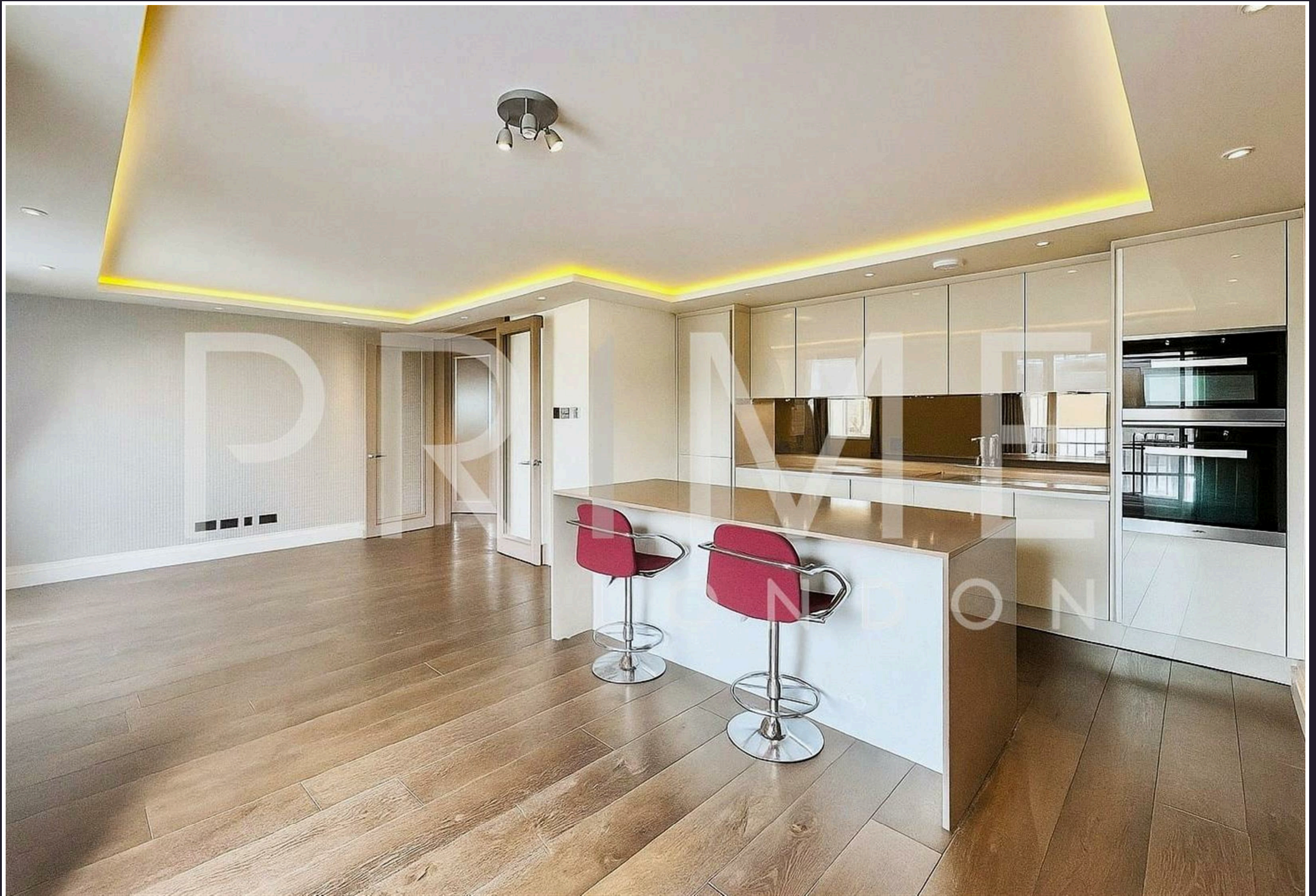


55 Ebury Street, Belgravia, SW1W 0PA

Asking Price £1,350,000





Asking Price £1,350,000

55 Ebury Street

Belgravia, SW1W 0PA

- Two bedroom apartment
- Large reception area
- Close proximity to Victoria and Sloane Square stations
- 937 sq ft (87.07 sqm)
- Parking
- 24 hour concierge

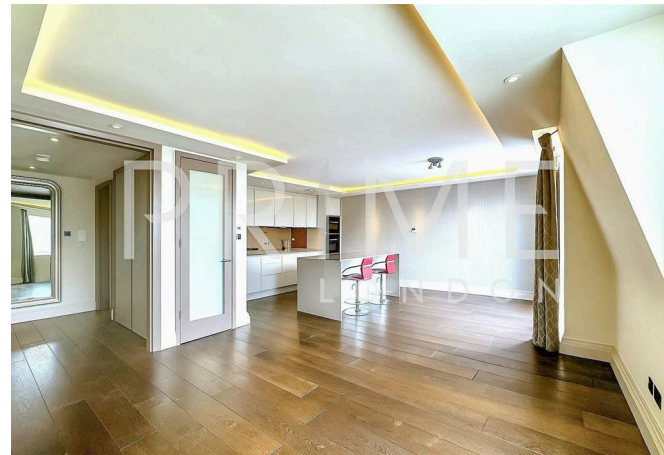
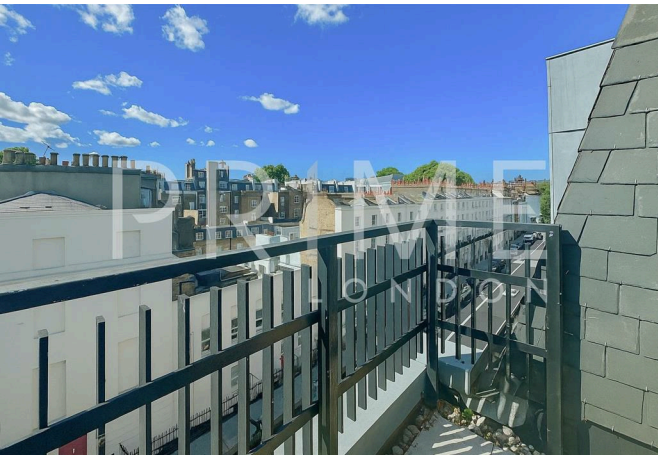
This contemporary two-bedroom apartment, located at 55 Ebury Street in the heart of Belgravia, is available for sale chain-free through Prime London.

Totalling 937 sq ft (87.07 sqm), the property comprises a spacious reception area, a well-proportioned kitchen, two double bedrooms, one with a built-in wardrobe and two en-suite bathrooms.

Conveniently situated, 55 Ebury Street is just a stone's throw away from the amenities of Eccleston Street and Elizabeth Street, offering a variety of local eateries, trendy cafes, and bars. Eccleston Yards is also nearby.

Residents of 55 Ebury Street also benefit from a 24 hour concierge.

Transport links are easily accessible, with Victoria station providing services such as the Gatwick Express, underground, and buses. Sloane Square tube station (District and Circle lines) is also within walking distance.



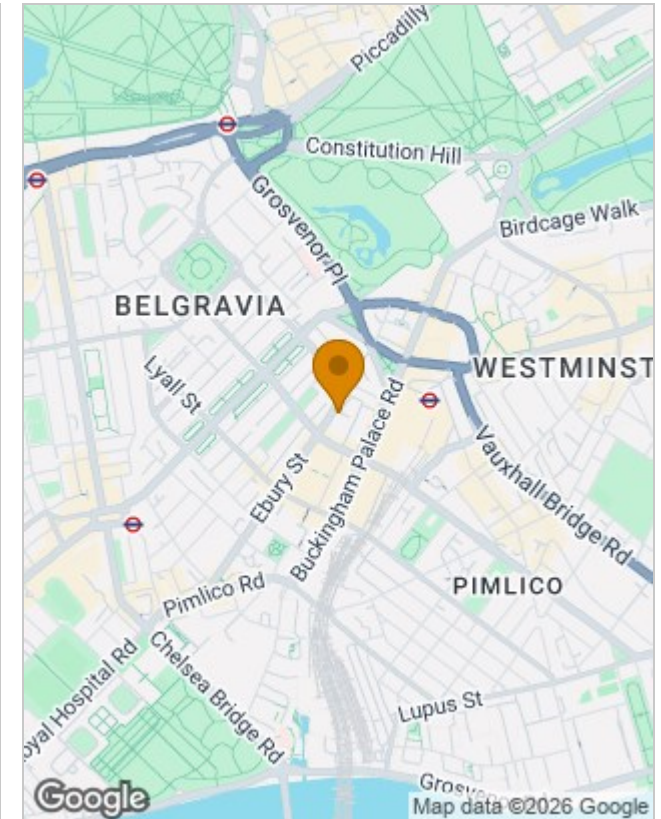




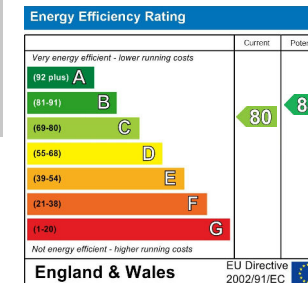
Floor Plans



Location Map



Energy Performance Graph



Viewing

By appointment. Contact us if you wish to arrange a viewing appointment for this property, or require further information.

The particulars are set out as a general outline only for the guidance of intended purchasers or lessees, and do not constitute, any part of a contract. Nothing in these particulars shall be deemed to be a statement that the property is in good structural condition or otherwise nor that any of the services, appliances, equipment or facilities are in good working order. Purchasers should satisfy themselves of this prior to purchasing.