

Douglass Tower

Goodluck Hope, E14 0JU

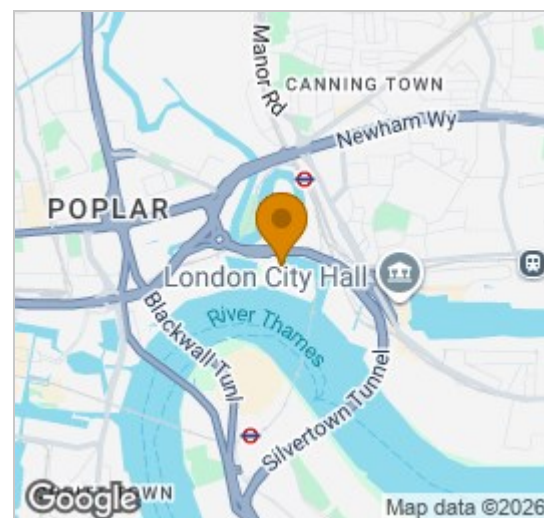
Asking Price £449,500



Floor Plan



Area Map



Energy Efficiency Graph

Viewing

By appointment. Contact us on 0207 928 6663 if you wish to arrange a viewing appointment for this property, or require further information.

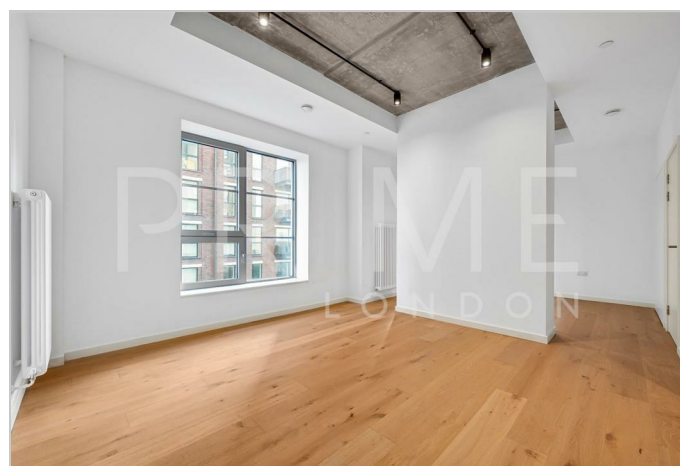
- Studio Apartment
- 453 sq ft (42.1 sqm)
- Views of the Landscaped Garden Walk
- Residents pool, gym and cinema

This stunning 453 sq ft (42.1 sqm) studio apartment, in the new sought after Goodluck Hope development, is available for sale through Prime London.

This beautifully designed home features a spacious open-plan living and kitchen area. The apartment follows on to the double bedroom with fitted wardrobes and a with a separate sleek modern bathroom.

Residents enjoy exclusive access to The 1595 Club with its 25m outdoor pool, gym, spa, co-working lounges, cinema, and concierge. On-site amenities include the Wharf Brewing Co., Island Grocer, cafés, and direct access to the Thames Clipper, placing Canary Wharf and central London within easy reach.

Perfectly connected, Goodluck Hope is just moments from Canning Town station (Jubilee Line & DLR), providing swift links to Canary Wharf, the City, and London City Airport. For a scenic commute, the Thames Clipper service runs directly from the on-site jetty into central London.



These particulars, whilst believed to be accurate are set out as a general outline only for guidance and do not constitute any part of an offer or contract. Intending purchasers should not rely on them as statements of representation of fact, but must satisfy themselves by inspection or otherwise as to their accuracy. No person in this firm's employment has the authority to make or give any representation or warranty in respect of the property.

Palace View, 131 Lambeth Road, London SE1 7BT | 21 Grosvenor Gardens, Belgravia, London SW1W 0BP

Tel: 0207 928 6663 | 0207 052 1075 Email: Office@PrimeLondonResidential.com www.PrimeLondonResidential.com