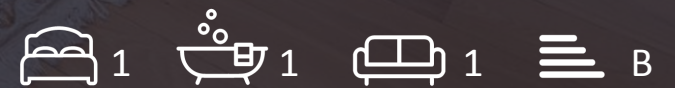




Arena Tower, Canary Wharf, E14 9UE

Asking Price £495,000





Arena Tower

Canary Wharf, E14 9UE

- One bedroom apartment
- Private Balcony
- 24 hour concierge
- 595 sq ft (55.28 sqm)
- Views of the Isle of Dogs and Greenwich
- Residents gym and swimming pool

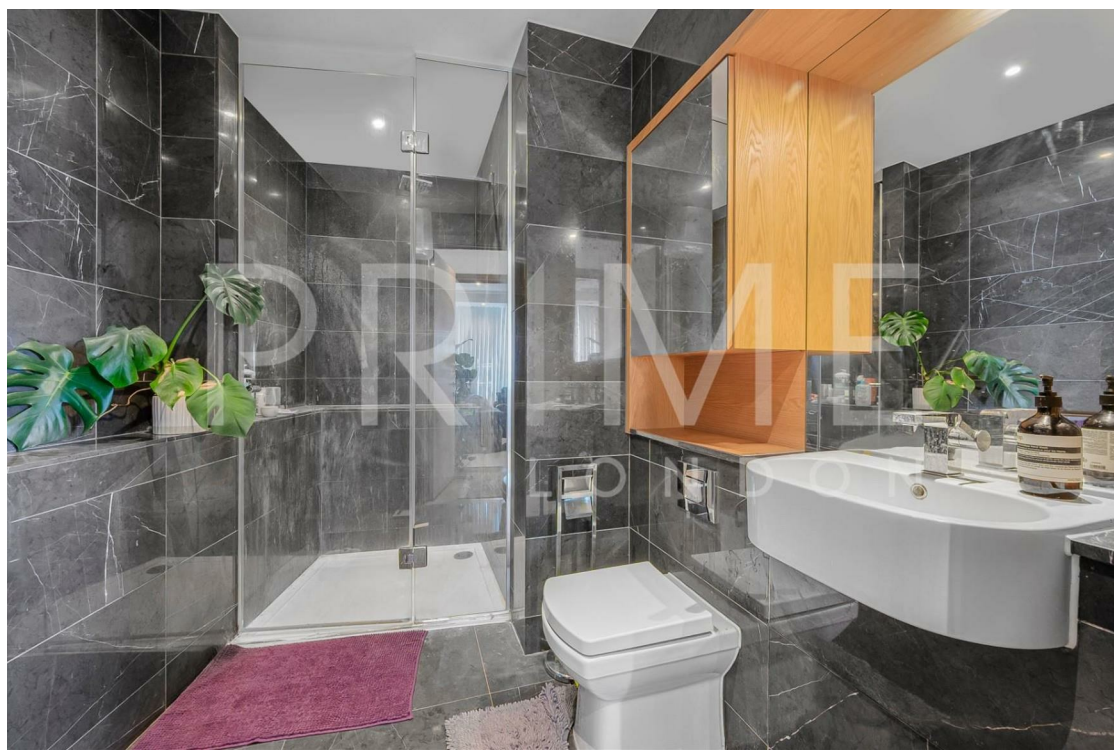
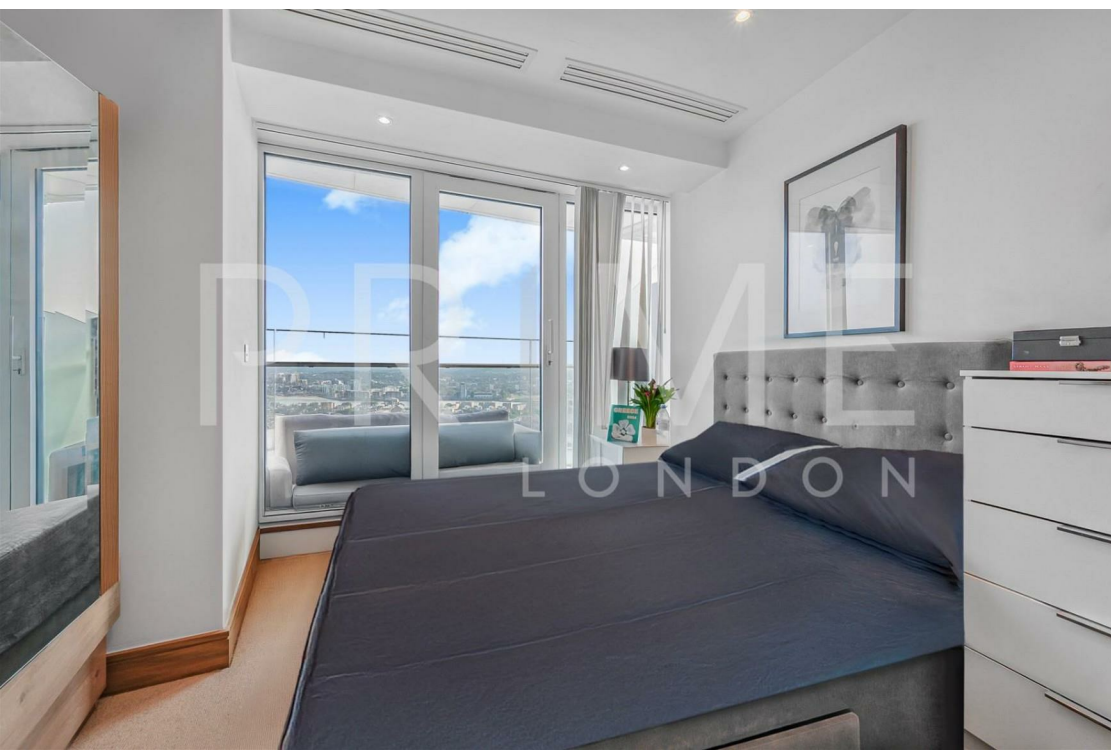
This stylish one bedroom apartment, with 595 sq ft (55.28 sqm) of internal space, in the well sought after Arena Tower, is available for sale through Prime London.

This bright and modern apartment features a high-specification interior with a spacious open-plan reception area, seamlessly extending onto a full-width balcony/terrace. The generously sized bedroom includes built-in wardrobes, complemented by a beautifully appointed three-piece bathroom suite and ample storage throughout the home.

Residents of Arena Tower enjoy an impressive range of on-site amenities, including a 24 hour concierge service, a private cinema, and exclusive access to the Nuffield Health gym at Baltimore Wharf. This expansive, two-level facility boasts a wide array of cardio and strength-training equipment, free weights, and even a boxing ring.

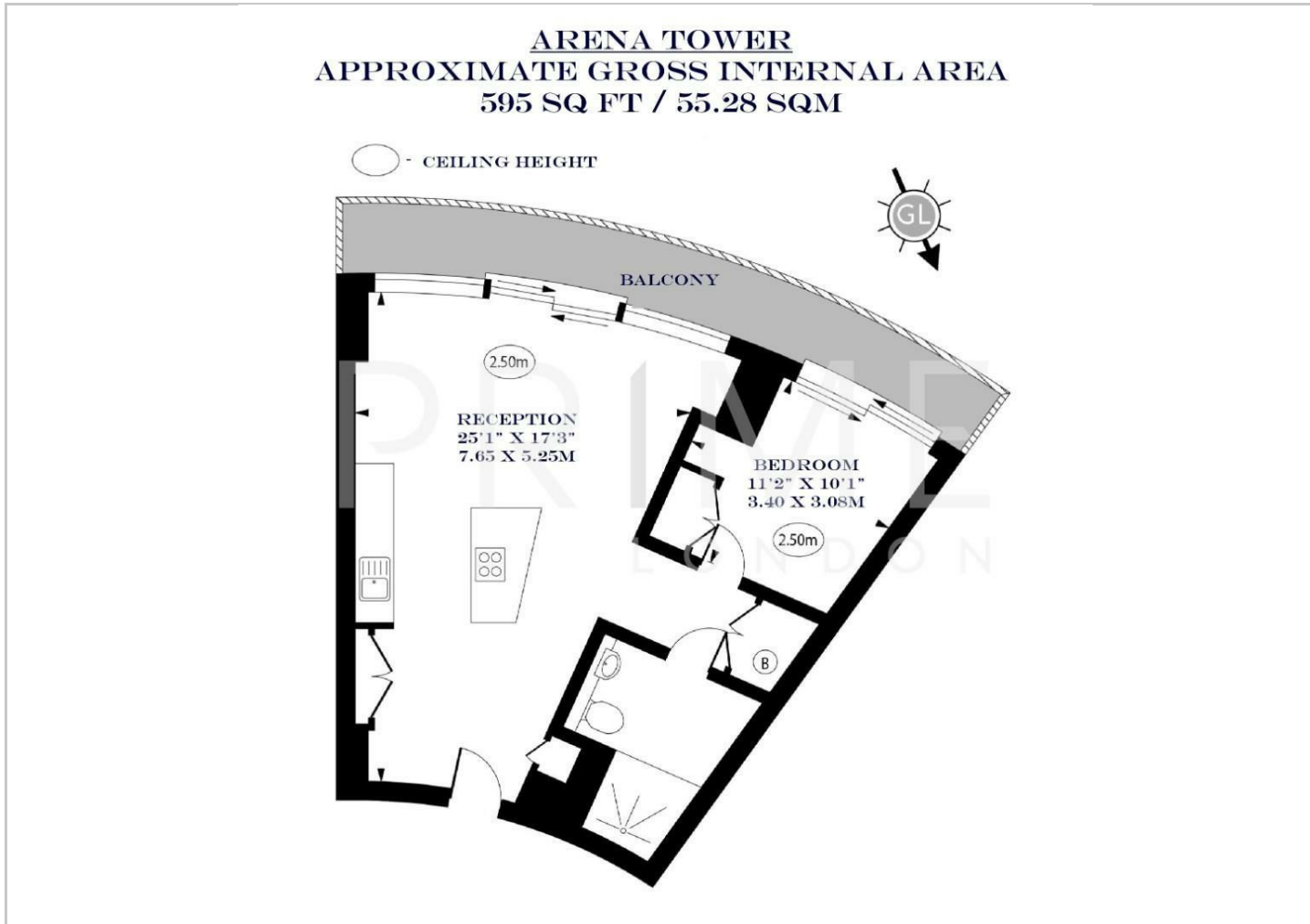
Additionally, residents benefit from access to a 25 metre indoor swimming pool - one of only three full-length pools available in Canary Wharf residential developments.







Floor Plans



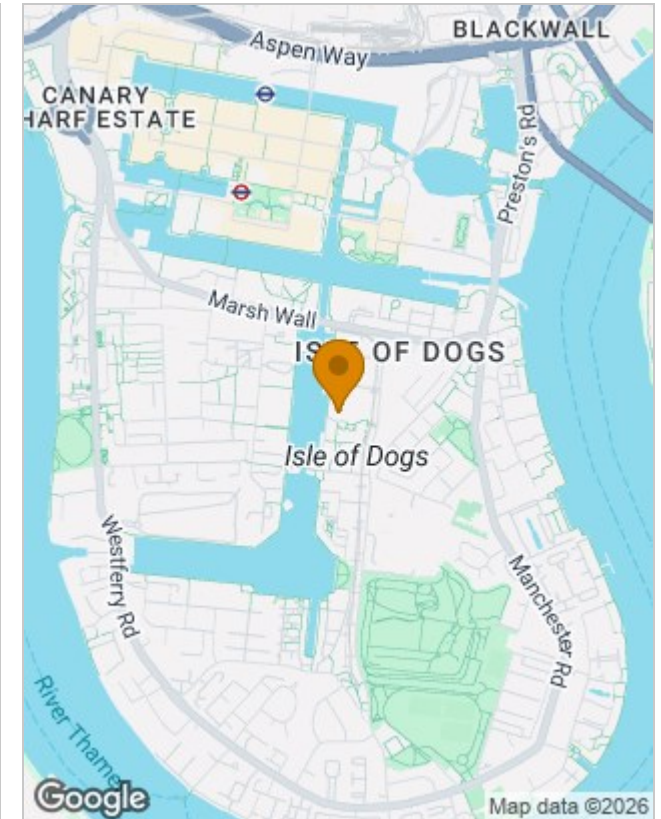
Viewing

By appointment. Contact us if you wish to arrange a viewing appointment for this property, or require further information.

The particulars are set out as a general outline only for the guidance of intended purchasers or lessees, and do not constitute, any part of a contract. Nothing in these particulars shall be deemed to be a statement that the property is in good structural condition or otherwise nor that any of the services, appliances, equipment or facilities are in good working order. Purchasers should satisfy themselves of this prior to purchasing.

21 Grosvenor Gardens, Belgravia, London SW1W 0BP | Palace View, 131 Lambeth Road, London SE1 7BT
 Tel: 0207 052 1075 | 0207 928 6663 Email: Office@PrimeLondonResidential.com www.PrimeLondonResidential.com

Location Map



Energy Performance Graph

