

2 Bolander Grove

Lillie Square, SW6 1EY

£730,000



1



1

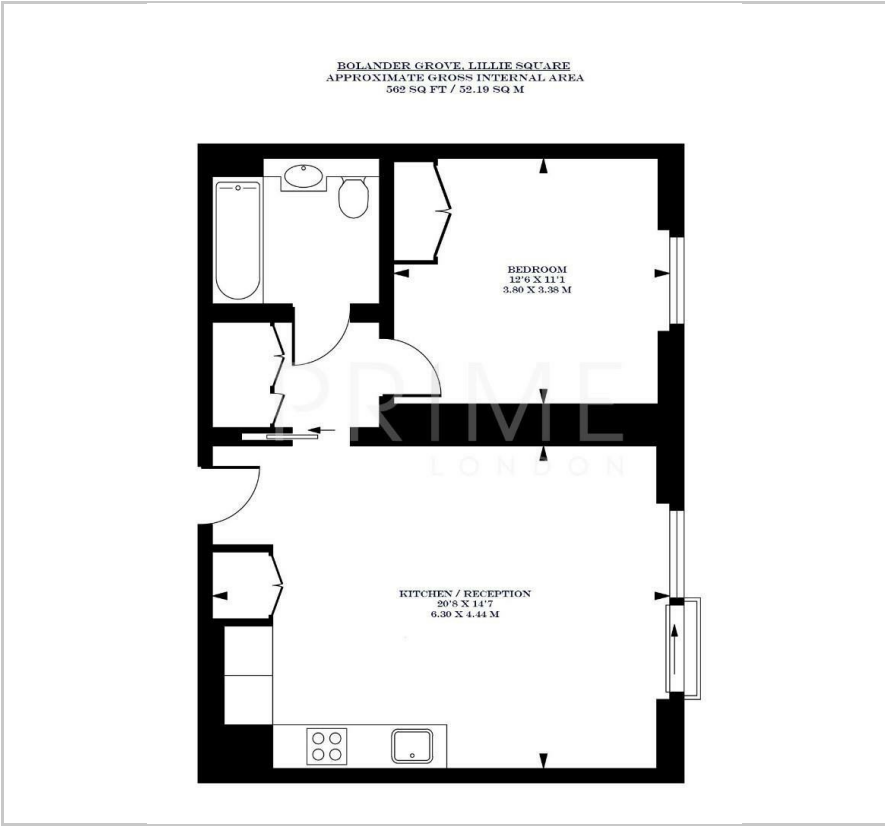


1



B

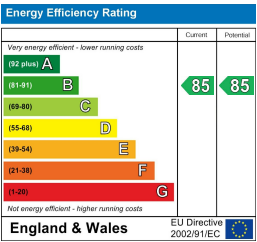
Floor Plan



Area Map



Energy Efficiency Graph



Viewing

By appointment. Contact us on 0207 052 1075 if you wish to arrange a viewing appointment for this property, or require further information.

- Exceptional one bedroom ▪ 562 sq ft (52.19 sqm) apartment
- Fully fitted kitchen with integrated appliances ▪ A stone's throw away from West Brompton Station
- Residents' gym, pool and spa ▪ 24 hour concierge



This pristine one bedroom apartment, located in the prestigious Lillie Square development, is available for chain free sale through Prime London.

Totalling 562 sq ft (52.19 sqm), the property boasts a spacious open plan reception and kitchen area with large windows that allow for excellent natural light throughout. The bedroom offers a walk in wardrobe and ample storage space. The apartment also features a modern bathroom with comfort cooling and underfloor heating throughout.

This apartment is located in the highly sought after Lillie Square development that offers a residents' gym, swimming pool, spa, concierge service and 24 hour concierge.

Lillie Square is conveniently situated a stone's throw away from West Brompton Station, and being within easy reach of the popular Fulham and Chelsea neighborhoods. The development is also within easy reach of numerous cafes, restaurants and local shops.



These particulars, whilst believed to be accurate are set out as a general outline only for guidance and do not constitute any part of an offer or contract. Intending purchasers should not rely on them as statements of representation of fact, but must satisfy themselves by inspection or otherwise as to their accuracy. No person in this firms employment has the authority to make or give any representation or warranty in respect of the property.