



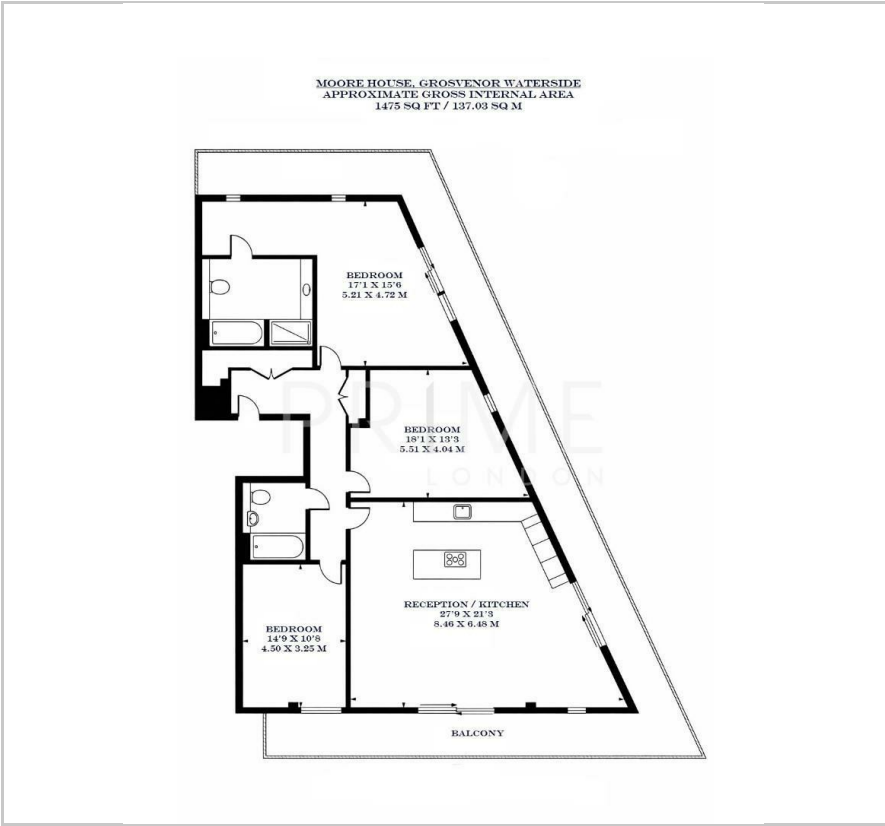
Moore House

2 Gatliff Road, Grosvenor Waterside, SW1W 8DU

£1,927 Per Week



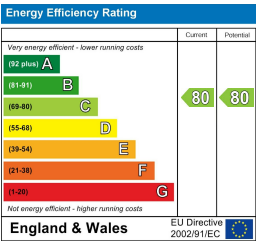
Floor Plan



Area Map



Energy Efficiency Graph



Viewing

By appointment. Contact us on 0207 052 1075 if you wish to arrange a viewing appointment for this property, or require further information.

- Exceptional three bedroom ▪ 1475 sq ft (137.03 sq m) apartment
- Wrap-around terrace with ▪ Residents' gym, spa and on skyline views site Sainsburys
- Walking distance to ▪ 24 hour concierge Battersea Power Station

This bright and modern three bedroom apartment, located in the highly sought after Grosvenor Waterside development, is available for lease through Prime London.

Spanning 1,475 sq ft (137.03 sqm), the property boasts a generous open plan reception and kitchen area with floor to ceiling windows, allowing for excellent natural light throughout. A key feature of this apartment is the wrap-around terrace, with panoramic views reaching across the city. The three bedrooms are all modern and spacious, with the master bedroom showcasing an ensuite and wardrobe area. The apartment benefits from a cooling system and a sleek modern style throughout, for luxury and comfort.

Residents of Grosvenor Waterside enjoy access to a newly refurbished gym, spa, and 24 hour concierge service.

Located on the north side of the river by Chelsea Bridge, the apartment is close to the open spaces of Battersea Park. Victoria mainline and underground station (Victoria, Circle, and District lines, zone 1) are nearby, and Grosvenor Waterside is just half a mile from Sloane Square underground station, with Kings Road's fashionable shops within easy walking distance.



These particulars, whilst believed to be accurate are set out as a general outline only for guidance and do not constitute any part of an offer or contract. Intending purchasers should not rely on them as statements of representation of fact, but must satisfy themselves by inspection or otherwise as to their accuracy. No person in this firm's employment has the authority to make or give any representation or warranty in respect of the property.