

## The Wilderly

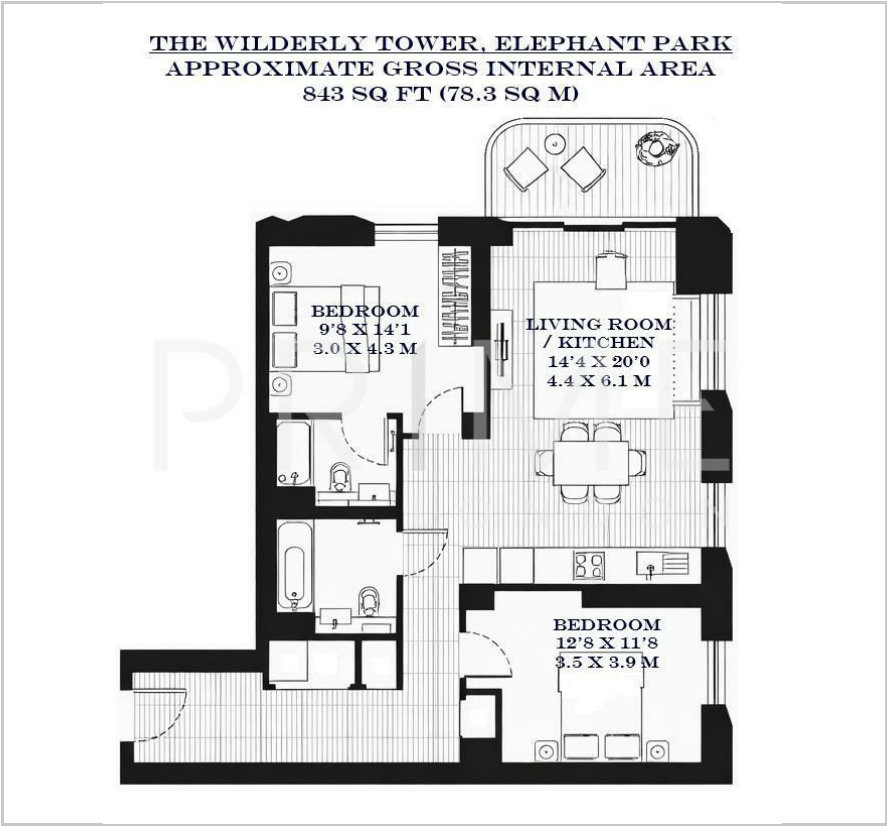
Ash Avenue, Elephant Park, SE17 1HS

Asking Price £1,005,000





Floor Plan



Area Map



Energy Efficiency Graph

Viewing

By appointment. Contact us on 0207 928 6663 if you wish to arrange a viewing appointment for this property, or require further information.

- Two bedroom apartment
- 843 sq ft (78.3 sqm)
- Natural Woodlands colour scheme
- Residents' communal gardens
- 24 hour concierge
- \*Images are of the show apartment, for representation of specification and finishes\*

This beautifully presented two bedroom apartment, spanning 843 sq ft (78.3 sqm) within the sought after Wilderly Tower at Elephant Park, is available for sale through Prime London.

The property offers a spacious living space, and features a bright open plan reception space with full height windows, alongside a bespoke modern kitchen with integrated appliances. A private south-east facing balcony provides the perfect outdoor extension to the living area.

The property further includes a spacious principal bedroom with fitted wardrobes and benefits from an en-suite. Additionally, the apartment offers second double bedroom offers ample space and a large family bathroom.

Residents benefit from a comprehensive suite of amenities, including a concierge, co-working lounge, wellness studio, landscaped private garden, roof terraces, and a 24th floor lounge and dining space with panoramic views across London. The development has been carefully planned to balance social and relaxation spaces, with interiors and communal areas inspired by the surrounding parkland.

Positioned moments from Elephant & Castle Underground and rail stations, The Wilderly offers excellent connectivity across the capital, with direct access to the Northern and Bakerloo lines as well as Thameslink services. Many of London's major cultural landmarks, universities, and the South Bank are within a short



These particulars, whilst believed to be accurate are set out as a general outline only for guidance and do not constitute any part of an offer or contract. Intending purchasers should not rely on them as statements of representation of fact, but must satisfy themselves by inspection or otherwise as to their accuracy. No person in this firm's employment has the authority to make or give any representation or warranty in respect of the property.